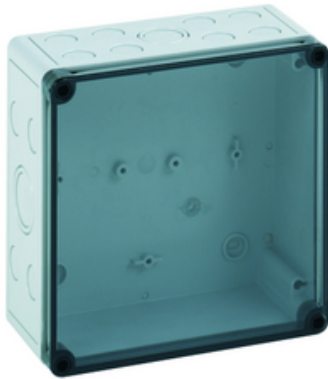


Product

TK PC 1818-9-tm



Empty enclosure - Industrial Quality -, box: glass fibre reinforced polycarbonate, grey, similar to RAL 7035, cover: polycarbonate, transparent

with metric knockouts

Article: TK PC 1818-9-tm

Technical Data

Dimensions:

Width:	182 mm
Length:	180 mm
Height:	90 mm
interior height:	75 mm

material:

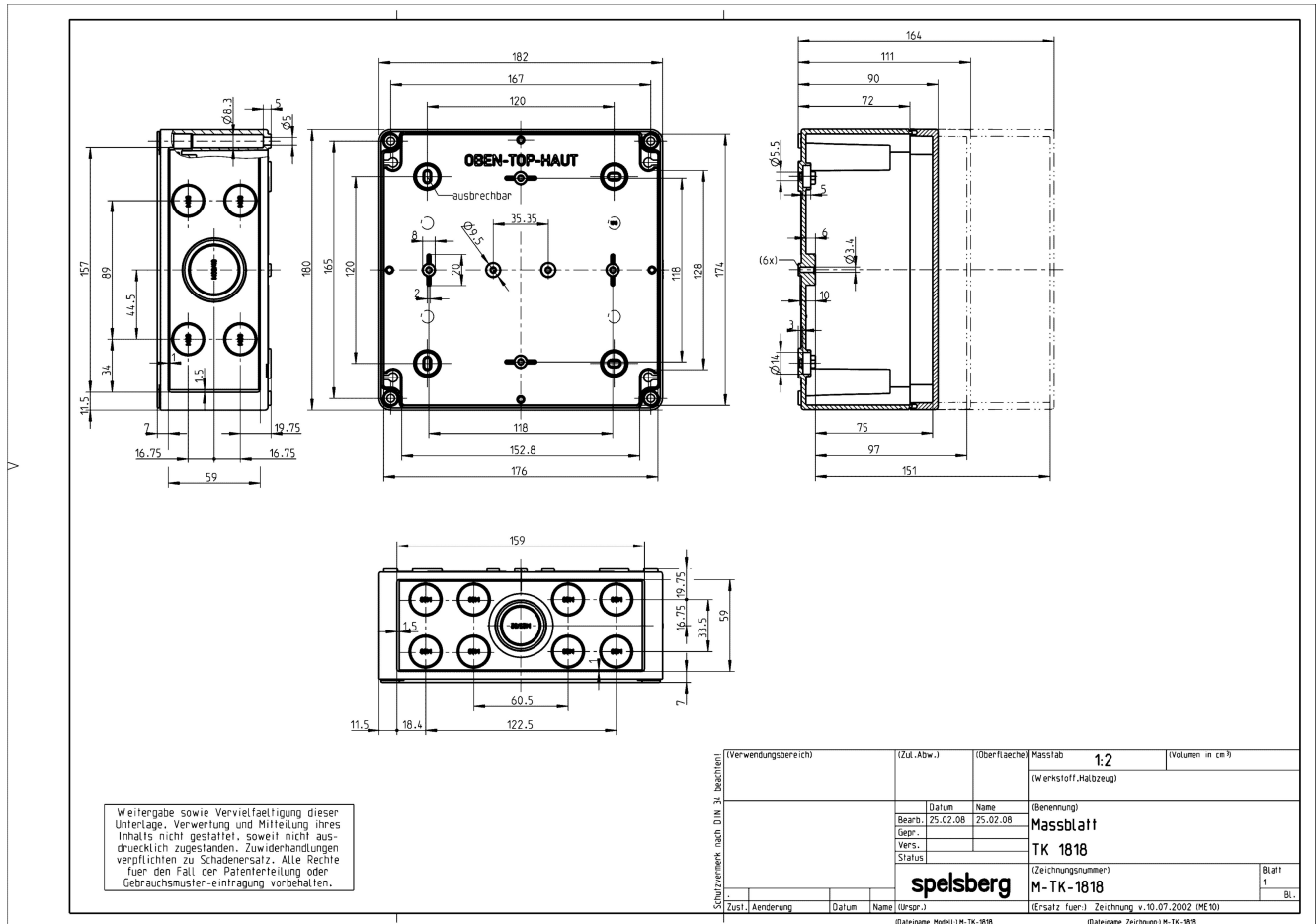
Base:	Polycarbonate, glass-fibre reinforced, grey simila
Cover:	Polycarbonate, transparent
Sealing:	Polyurethane
Cover screw:	Polyamide 6, fiber-glass reinforced

Properties:

Ingress protection:	IP66 - acc. EN 60529 / DIN VDE 0470-1
Ambient temperature (min.):	-35 °C
Ambient temperature (max.):	80 °C
Ambient temperature (24 h):	60 °C
Max. rel. humidity at 40° C:	50%
Max. rel. humidity at 25° C (short Therm):	{100%}
Rated insulation voltage AC:	690V
Impact resistance:	{IK08 nach DIN EN 5012 / VDE 0470 Teil 100 }
Protection class:	II - isolate protection acc. VDE 0106 Protective insulation as per VDE 0106

Halogen-free:	√
Heavy metals-free:	√
PVC-free:	√
Silicone-free:	√
UV resistance:	√
Weatherproof:	√
Combustion behaviour to UL:	5VA nach UL 50 / UL 746C
Combustion behaviour to UL:	{V-2 nach UL 94}
Combustion behaviour to VDE:	960°C acc. VDE 0471/ EN 60695
Fitted for outdoor application:	√
Knockouts:	√

Drawing



Manufacturer

Günther Spelsberg GmbH + Co. KG
 Im Gewerbepark 1
 58579 Schalksmühle
 +49 (0)2355/892-0
 +49 (0)2355/892-299
 www.spelsberg.de