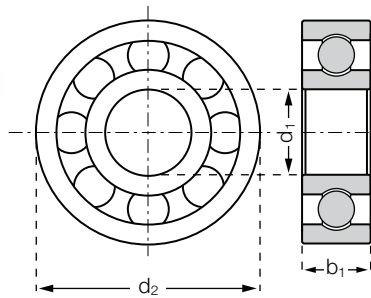


xirodur® A500 Polymer Ball Bearings | Product Range

Radial deep-groove ball bearings,
temperature up to +150 °C



Order key



BB-623-A500-70-ES



Ball material
ES = stainless steel

Cage material
70 = PEEK

Race material
A500 = xirodur® A500

Dimensions acc. to
DIN 625-1

Ball bearing

Made of xirodur® A500

PEEK cage

stainless steel balls



+150 °C

-100 °C

xiros® polymer ball bearings open up new application areas for plastic roller bearings. After the 2007 market launch, the life-time of the high-temperature option with xirodur® A500 inner and outer rings could be clearly raised by up to factor 5.

- Lubrication- and maintenance-free
- For high temperatures up to +150 °C
- Corrosion-resistant

- Non-magnetic and washable
- Chemical resistant
- Low weight
- Inner-, outer races and cages made from FDA-compliant polymers
- Predictable lifetime
- For shaft diameter 3–20 mm
- Electrically insulating



PEEK cages, inner- and outer races
made from FDA-compliant polymers

Technical Data

Part number	Max. static bearing load axial [N]	Static bearing load [N]	Dynamic bearing load [N]	Max. speed [rpm]	Weight [g]
BB-623-A500-70-ES	40	30	40	5,000	0.4
BB-624-A500-70-ES	56	40	52	4,550	6.9
BB-626-A500-70-ES	125	60	81	3,200	2.3
BB-608-A500-70-ES	220	72	97	2,700	3.7
BB-6000-A500-70-ES	380	102	137	2,100	6.0
BB-6002-A500-70-ES	440	161	167	1,600	9.1
BB-6004-A500-70-ES	650	250	350	1,300	19.7

Dimensions [mm]

Part number	Race	Cage	Ball	Inner-Ø (d1) JS10	Outer-Ø (d2) h9	Width b1
BB-623-A500-70-ES	A500	PEEK	1.4401	3	10	4
BB-624-A500-70-ES	A500	PEEK	1.4401	4	13	5
BB-626-A500-70-ES	A500	PEEK	1.4401	6	19	6
BB-608-A500-70-ES	A500	PEEK	1.4401	8	22	7
BB-6000-A500-70-ES	A500	PEEK	1.4401	10	26	8
BB-6002-A500-70-ES	A500	PEEK	1.4401	15	32	9
BB-6004-A500-70-ES	A500	PEEK	1.4401	20	42	12