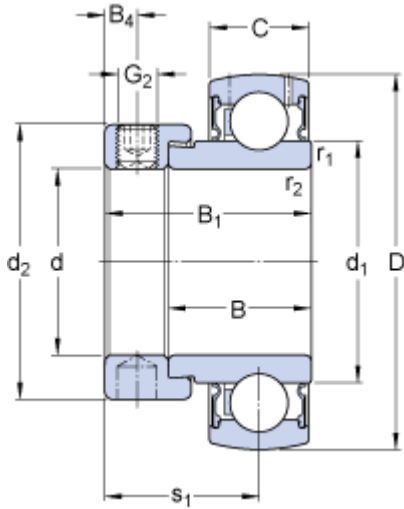


# E2.YET 205

SKF Energy Efficient

## Dimensions



$d$		25	mm
$D$		52	mm
$B_1$		30.9	mm
$C$		15	mm
$d_1$	$\approx$	33.74	mm
$d_2$		37.4	mm
$B$		21.5	mm
$B_4$		4.75	mm
$r_{1,2}$	min.	0.6	mm
$s_1$		23.4	mm

## Calculation data

Basic dynamic load rating	$C$	14	kN
Basic static load rating	$C_0$	7.8	kN
Fatigue load limit	$P_u$	0.335	kN
Limiting speed with shaft tolerance h6		7000	r/min
Calculation factor	$f_0$	14	

## Mass

Mass complete bearing		0.19	kg
-----------------------	--	------	----

## Mounting information

Thread grub screw	$G_2$	M6x0.75	
Hexagonal key size for grub screw	$N$	3	mm
Recommended tightening torque for grub screw		4	N·m

## Appropriate products

Rubber seating ring		RIS 205	
---------------------	--	---------	--