



# PRODUCT DATASHEET

## Minnie series

last update 5/1/2015

### DETAILS

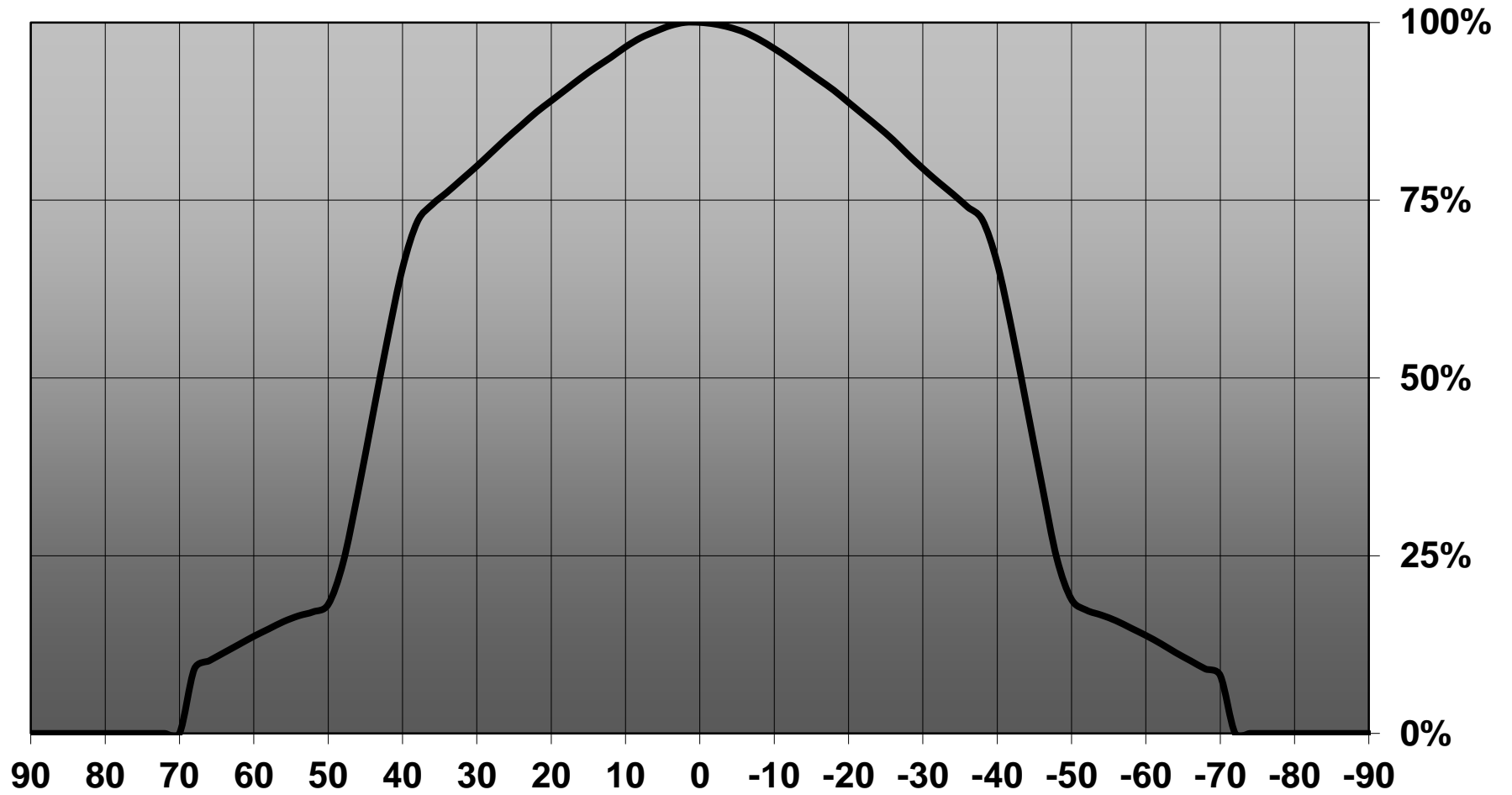
<b>Product Number</b>	CA13892_MINNIE-XW
<b>Family</b>	Minnie
<b>Type</b>	RefAssy
<b>Color</b>	black
<b>Diameter</b>	35 mm
<b>Height</b>	15.8 mm
<b>Style</b>	round
<b>Optic Material</b>	
<b>Holder Material</b>	PC
<b>Fastening</b>	
<b>Status</b>	ready
<b>ROHS Compliant</b>	Yes
<b>Date Updated</b>	7/05/2015



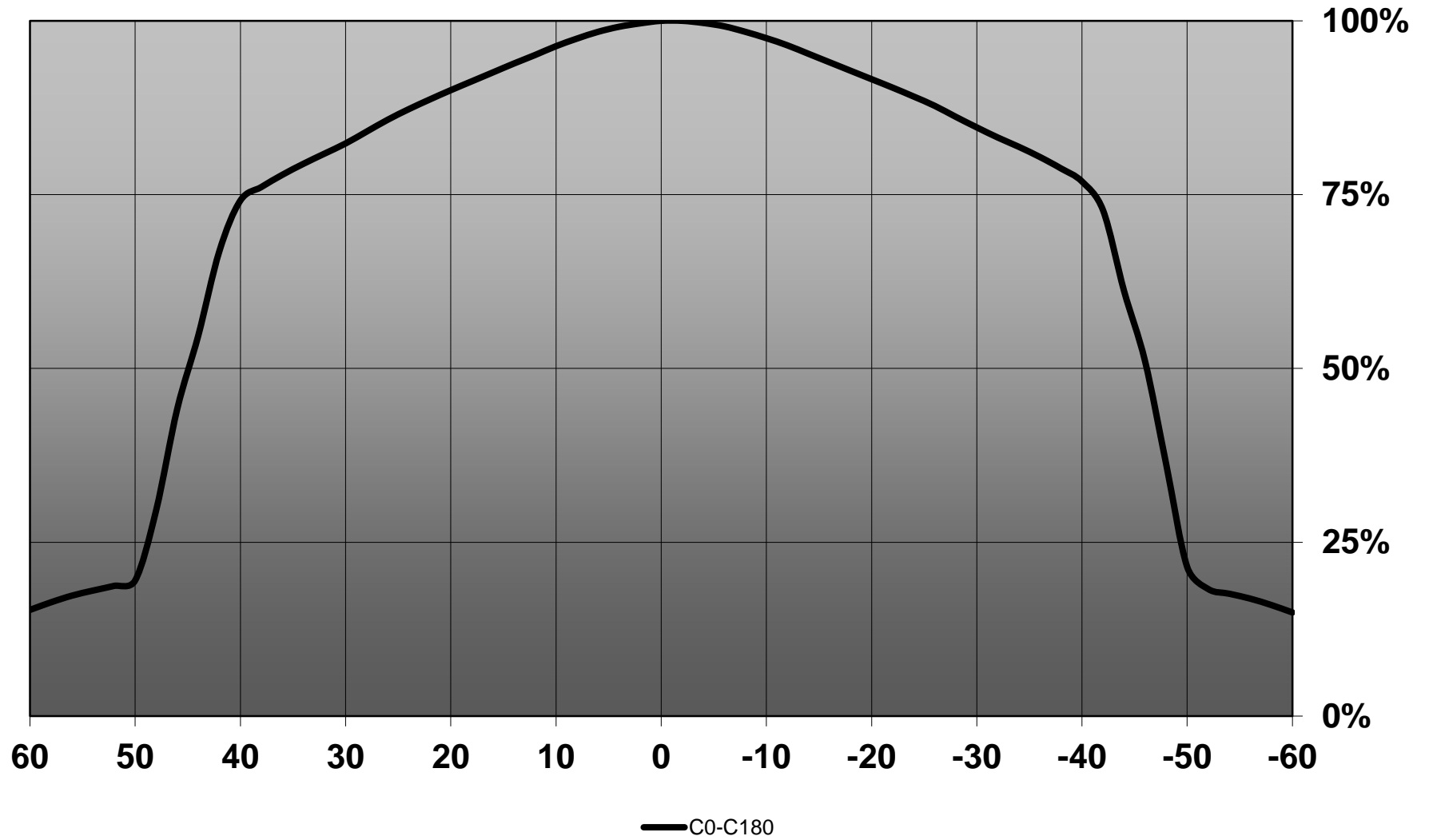
### OPTICAL PROPERTIES

LED	Viewing Angle	Light Beam	Efficiency	cd/lm	Connector
Duris S10	86 deg		92 %	0.500	-
MHD-E/G	89 deg		83 %	0.410	-
LUXEON M	90 deg		92 %	0.500	-
XHP70	91 deg		93 %	0.430	-

Relative intensity of CA13892\_MINNIE-XW\_(Duris\_S10)



# Relative intensity of CA13892\_MINNIE-XW-(LuxM)



D

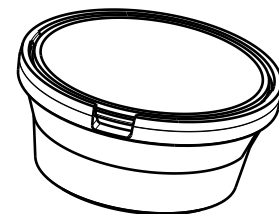
C

B

A

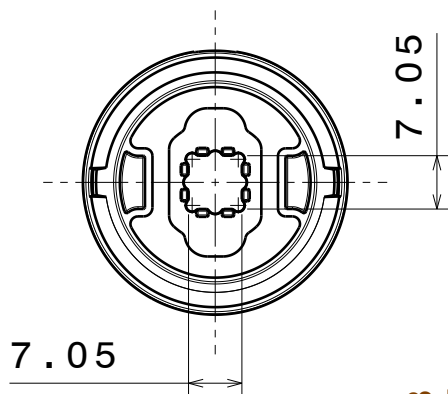
4

4

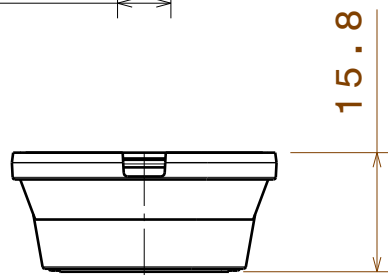


Isometric view

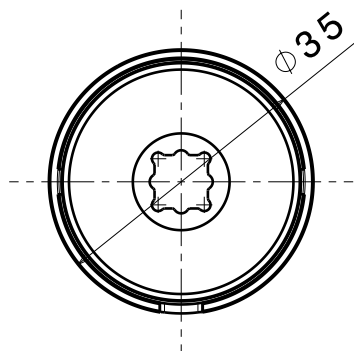
Bottom view



Front view



Top view



3

3

2

2

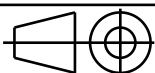
INDEX	PART NO	DESCRIPTION	MATERIAL	COLOUR
1	-	MINNIE_LUXEON-M_ASSEMBLY	Ref1 and holder PC, Tape PU foam	

Tolerances if not otherwise shown  
According to DIN ISO 2768-1  
Linear measures:  
Up to 30mm class M, otherwise class C.  
According to DIN ISO 2768-2  
Form and position: class L

LEDiL

Ledil Oy  
Salorankatu 10  
FIN 24240 SALO  
Finland

THIRD ANGLE PROJECTION:



DRAWING TITLE

MINNIE\_LUXEON-M\_ASSEMBLY

This drawing is the property  
of LEDiL Oy. It may not be  
reproduced, copied or  
communicated without a written  
agreement with LEDiL Oy."

SIZE PART NUMBER

A4

-

SCALE 1:1 WEIGHT

-

SHEET 1/1

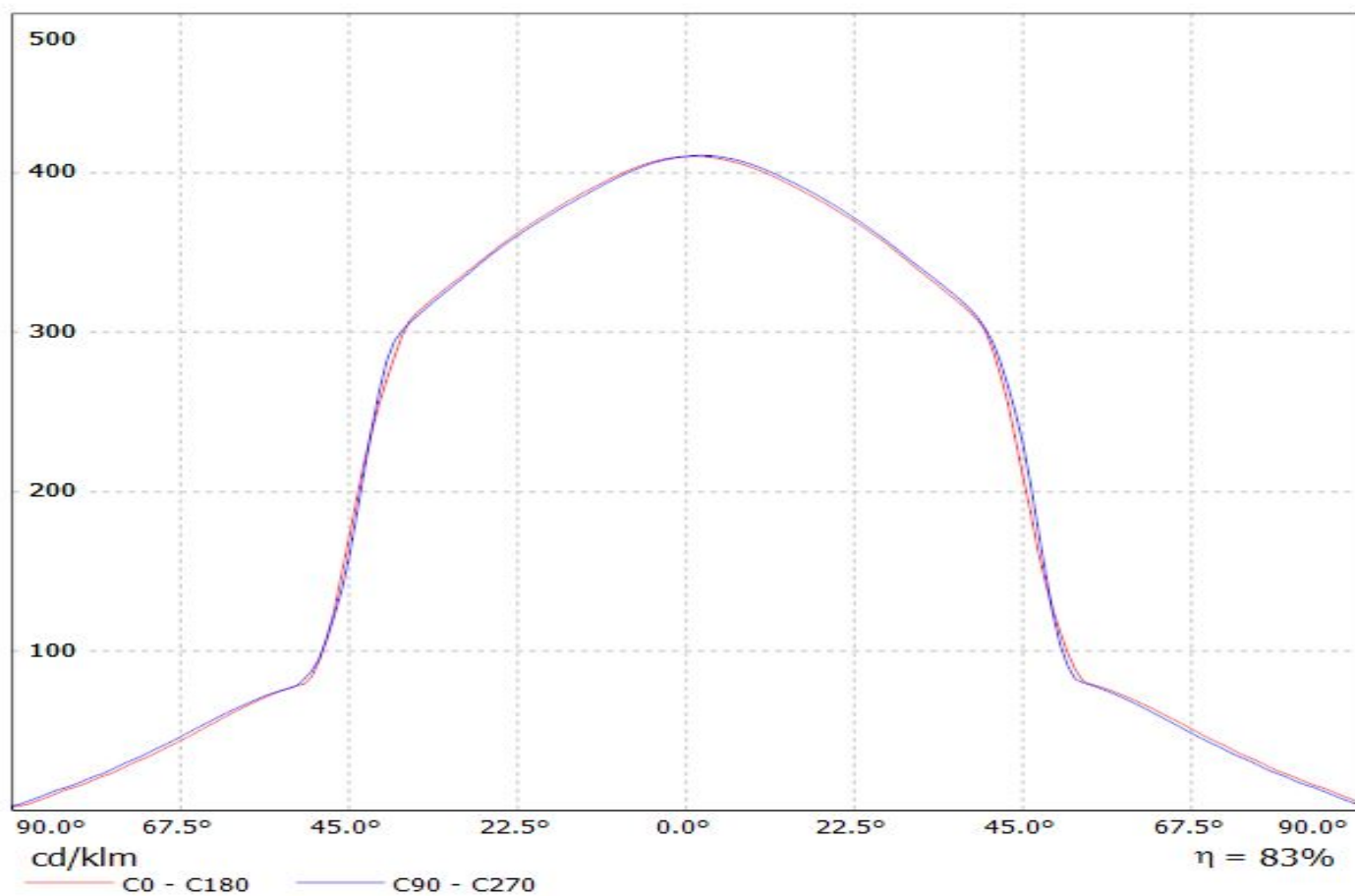
D

A

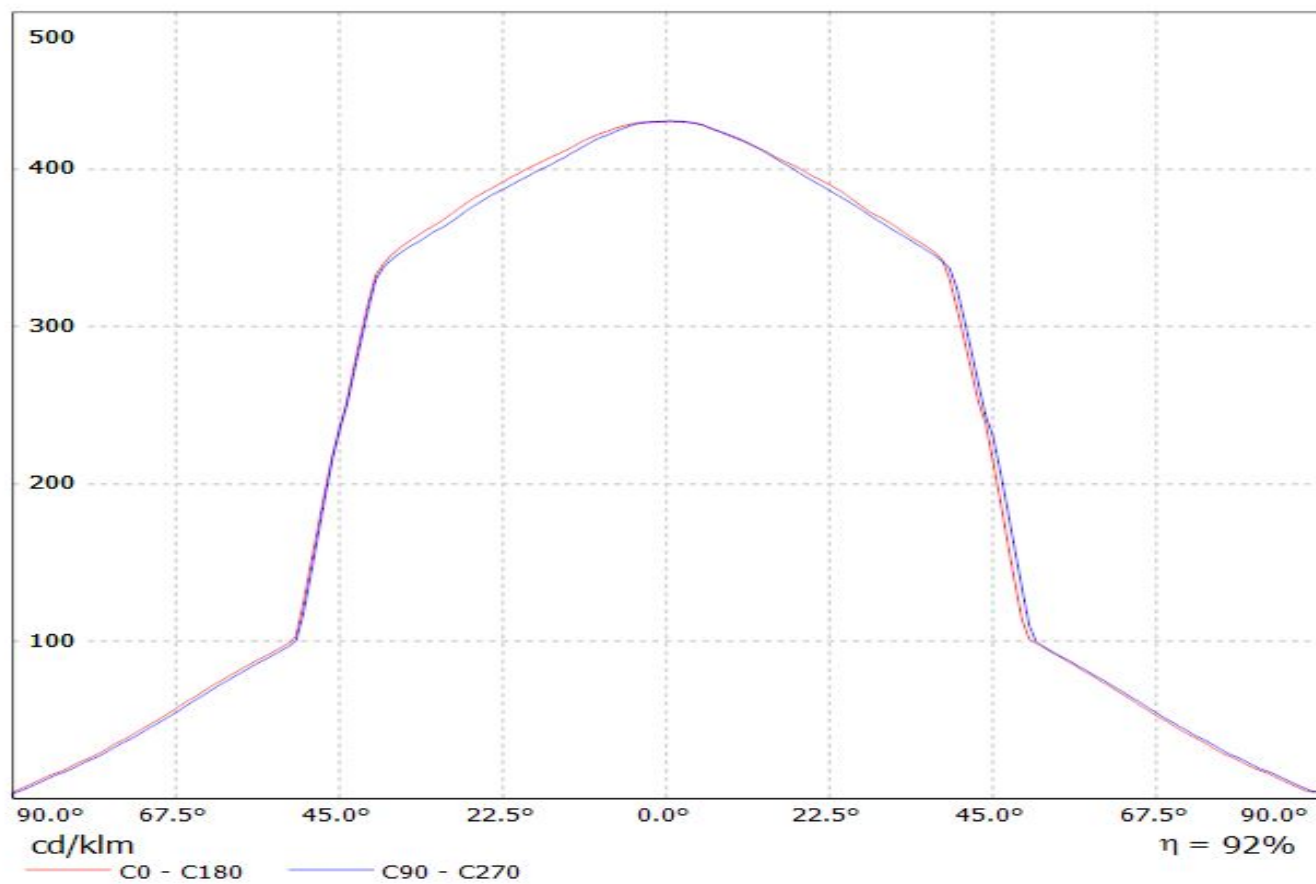
1

1

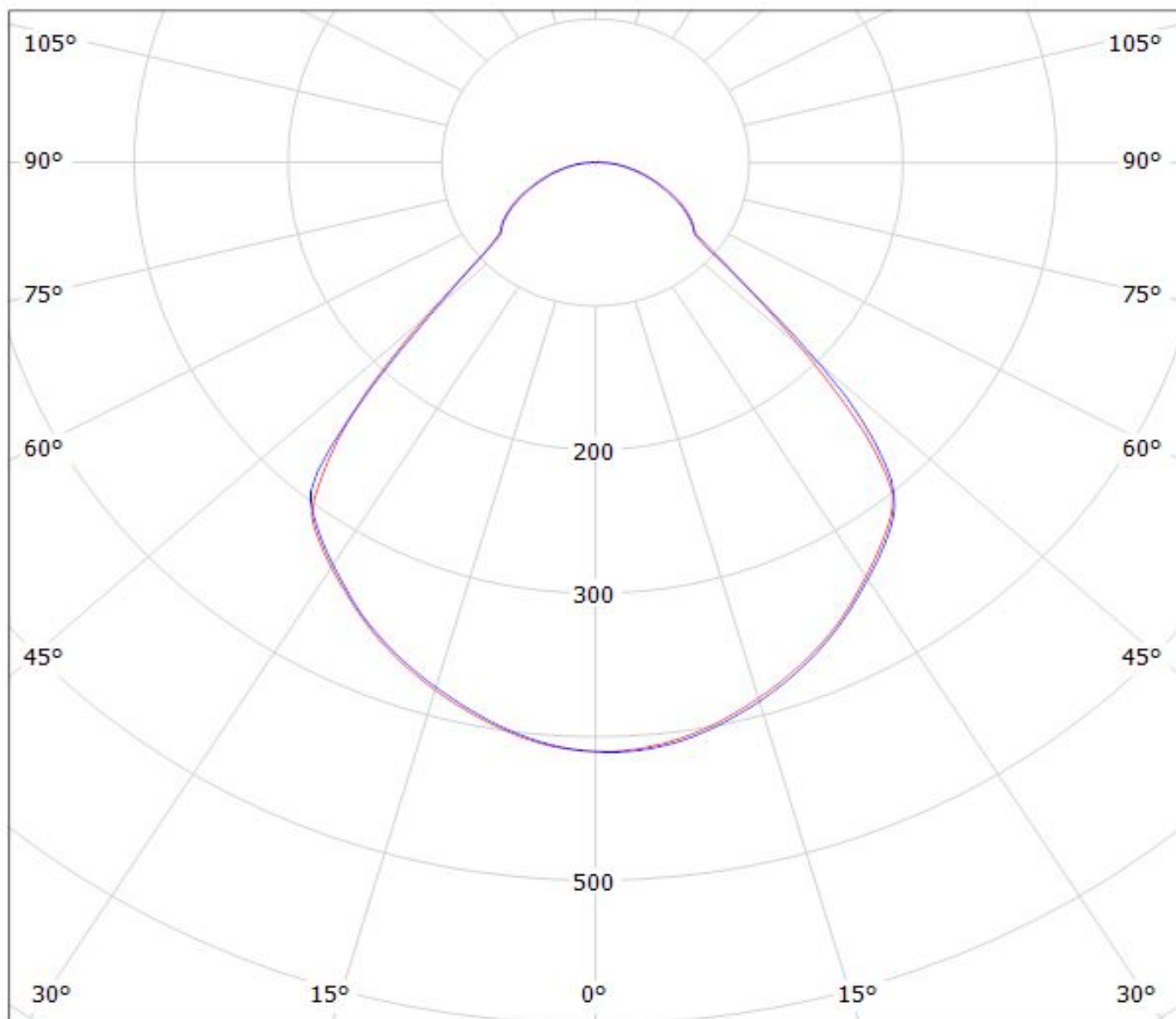
Luminaire: Ledil CA13892\_MINNIE-XW\_(MHD-G)  
Lamps: 1 x MHD-G\_528.91lm@100mA\_P=3.0W\_I=0.100A



Luminaire: Ledil CA13892\_MINNIE-XW\_(Cree\_XHP70)  
Lamps: 1 x Cree\_XHP70\_289.849lm@250mA\_P=1.255325W\_I=0.25A



Luminaire: Ledil CA13892\_MINNIE-XW\_(MHD-G)  
Lamps: 1 x MHD-G\_528.91lm@100mA\_P=3.0W\_I=0.100A

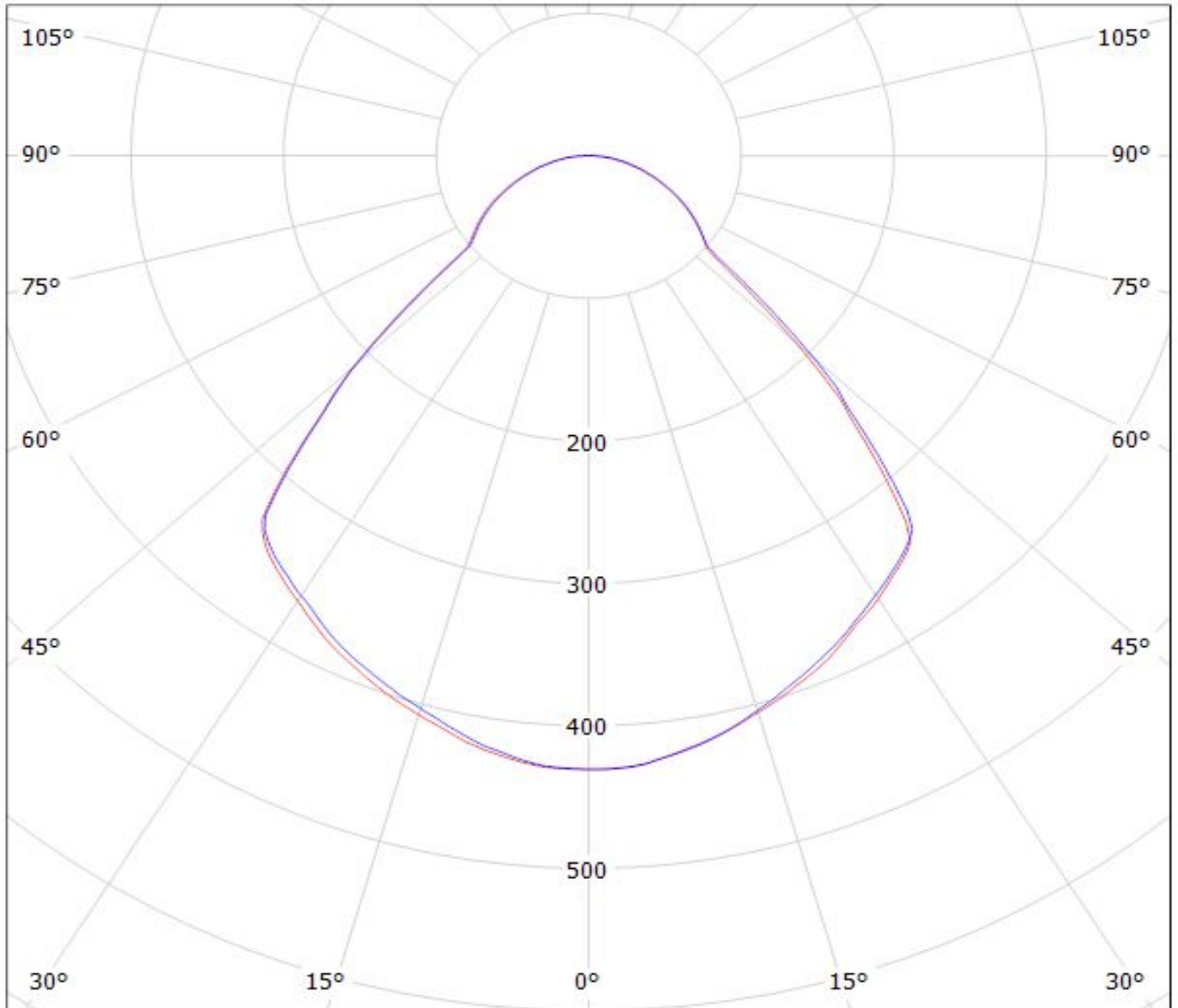


cd/klm

— C0 - C180 — C90 - C270

$\eta = 83\%$

Luminaire: Ledil CA13892\_MINNIE-XW\_(Cree\_XHP70)  
Lamps: 1 x Cree\_XHP70\_289.849lm@250mA\_P=1.255325W\_I=0.25A



cd/klm

$\eta = 92\%$

— C0 - C180    — C90 - C270

**NOTE: The typical divergence will be changed by different color, chip size and chip position tolerance. The typical total divergence is the full angle measured where the luminous intensity is half of the peak value.**