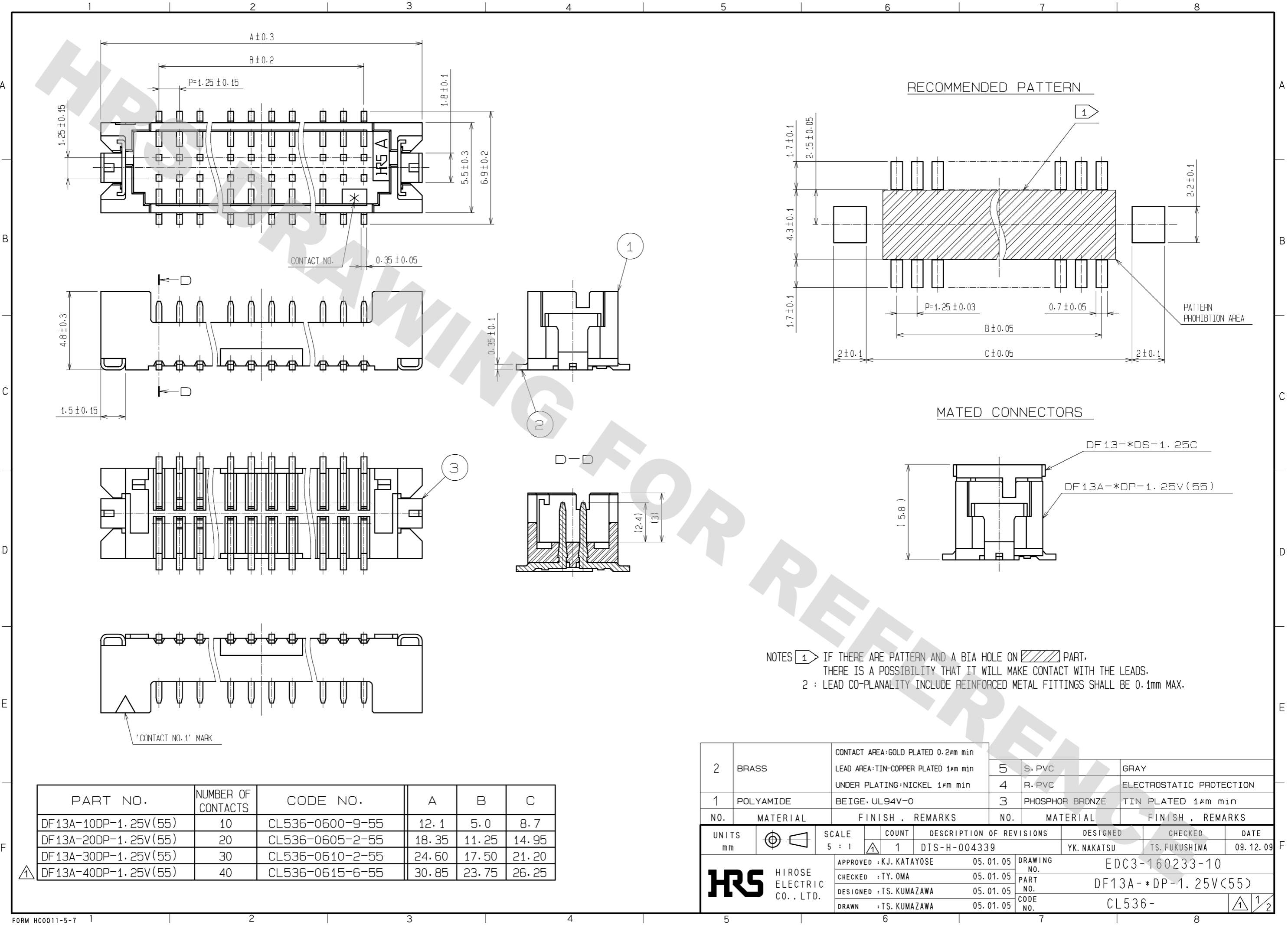


DRAWING FOR REFERENCE: This is subject to change without notice
08/11/2012

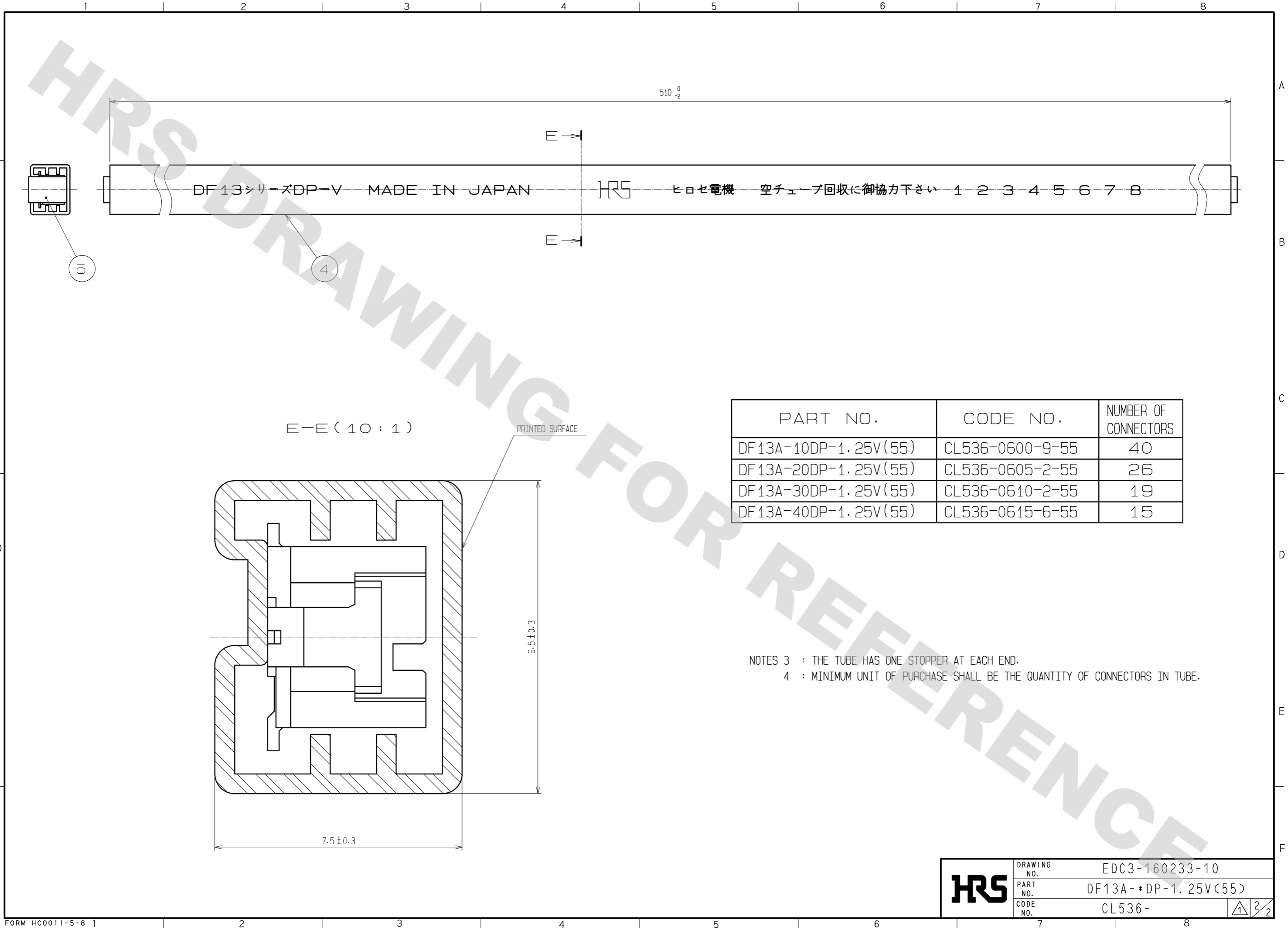


NOTES 1 IF THERE ARE PATTERN AND A BIA HOLE ON PART, THERE IS A POSSIBILITY THAT IT WILL MAKE CONTACT WITH THE LEADS.
2 : LEAD CO-PLANALITY INCLUDE REINFORCED METAL FITTINGS SHALL BE 0.1mm MAX.

PART NO.	NUMBER OF CONTACTS	CODE NO.	A	B	C
DF 13A-10DP-1.25V(55)	10	CL536-0600-9-55	12.1	5.0	8.7
DF 13A-20DP-1.25V(55)	20	CL536-0605-2-55	18.35	11.25	14.95
DF 13A-30DP-1.25V(55)	30	CL536-0610-2-55	24.60	17.50	21.20
DF 13A-40DP-1.25V(55)	40	CL536-0615-6-55	30.85	23.75	26.25

2	BRASS	CONTACT AREA:GOLD PLATED 0.2µm min	5	S. PVC	GRAY
		LEAD AREA:TIN-COPPER PLATED 1µm min		4	R. PVC
1	POLYAMIDE	UNDER PLATING:NICKEL 1µm min	3	PHOSPHOR BRONZE	TIN PLATED 1µm min
		BEIGE. UL94V-0			
NO.	MATERIAL	FINISH . REMARKS	NO.	MATERIAL	FINISH . REMARKS
UNITS mm		SCALE 5 : 1	COUNT 1	DESCRIPTION OF REVISIONS DIS-H-004339	
APPROVED : KJ. KATAYOSE 05.01.05			DESIGNED	YK. NAKATSU	
CHECKED : TY. OMA 05.01.05			CHECKED	TS. FUKUSHIMA	
DESIGNED : TS. KUMAZAWA 05.01.05			DATE	09.12.09	
DRAWN : TS. KUMAZAWA 05.01.05			DRAWING NO. EDC3-160233-10		
HRS HIROSE ELECTRIC CO., LTD.			PART NO. DF13A-*DP-1.25V(55)		
			CODE NO. CL536-		

DRAWING FOR REFERENCE: This is subject to change without notice
08/11/2012



PART NO.	CODE NO.	NUMBER OF CONNECTORS
DF13A-10DP-1.25V(55)	CL536-0600-9-55	40
DF13A-20DP-1.25V(55)	CL536-0605-2-55	26
DF13A-30DP-1.25V(55)	CL536-0610-2-55	19
DF13A-40DP-1.25V(55)	CL536-0615-6-55	15

NOTES 3 : THE TUBE HAS ONE STOPPER AT EACH END.
4 : MINIMUM UNIT OF PURCHASE SHALL BE THE QUANTITY OF CONNECTORS IN TUBE.

HRS	DRAWING NO.	EDC3-160233-10
	PART NO.	DF13A-*DP-1.25V(55)
	CODE NO.	CL536-