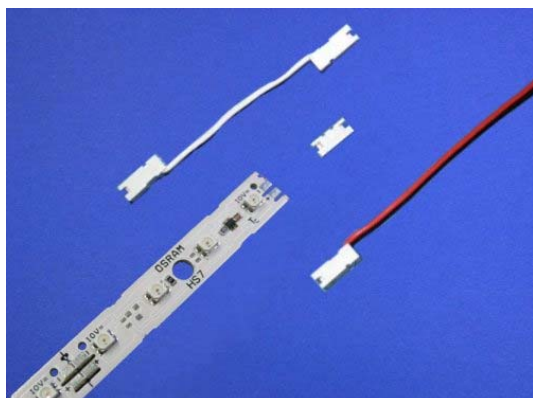


**CONNECTsystem for LINEARlight**

OS-LM-2x

**Benefits**

- Easy assembly without soldering wires twice
- Assembly without tools
- Reduced assembly work schedule
- Small in size

**Applications**

- Connector system for LINEARlight OS-LM01A

**Technical Operating Data and Ordering Guide**

Product	EAN *	S-Unit *	Max Voltage [V]	Max Current [A]	Diameter of Wire [mm <sup>2</sup> / AWG]	Length of Wire [mm]
OS-LM-2PIN	4050300887821	10	11	2	0,35 / 22	500
OS-LM-CONN	4050300887333	10	11	2	- / -	-
OS-LM-CONN-50	4008321052841	10	11	2	0,35 / 22	48

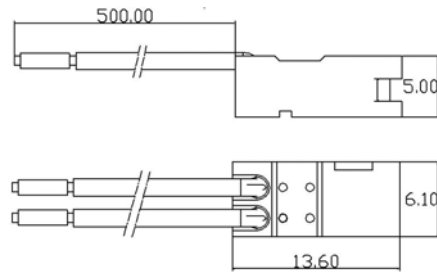
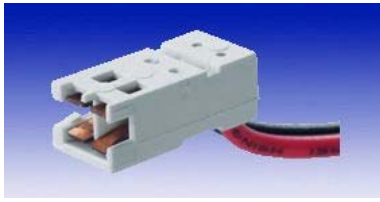
\*) EAN: Ordering number per single module  
S-Unit: Modules per shipping unit

**Technical Features**

- Easy connection by OSRAM CONNECTsystem by Feeder and Connector
- Use only in indoor applications or in luminaires with IP67 rating
- Coding by ligament secure from wrong polarity
- Proofed according to IEC 60512 (shock and vibration)
- Feeder OS-LM-2PIN for connection with power supply
- Feeder OS-LM-2PIN with cable end sleeve
- Feeder OS-LM-2PIN with cable horizontal and vertical turnable
- Connector OS-LM-CONN for stiff connection of two LINEARlight
- Connector OS-LM-CONN-50 for flexible connection of two LINEARlight

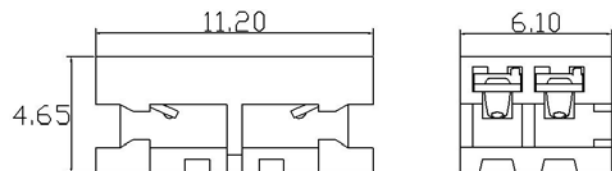
## Drawings

### OS-LM-2PIN



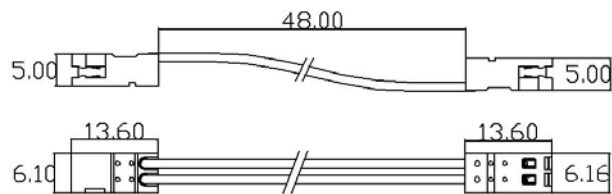
Housing PBT / white  
Isolation of Wires PVC / red/black

### OS-LM-CONN



Housing PBT / white  
Isolation of Wires - / -

### OS-LM-CONN-50



Housing PBT / white  
Isolation of Wires PVC / white

## Safety Information

- All components of the CONNECTsystem must be assembled to avoid any stress on the wires and/or board connectors. The installer must ensure that there is adequate strain relief between the board connection and the wiring.
- In order to maintain adequate electrical contact, please refrain from repeat removal, maximum of 5, of the CONNECTsystem.
- Installation of LED modules (with power supplies) needs to be made with regard to all applicable electrical and safety standards. Only qualified personnel should be allowed to perform installations.
- The maximum operation current on page 1 may not be exceeded.
- The CONNECTsystem is designed for indoor application only. Any unprotected outdoor use is not allowed.
- A suitable enclosure IP67 is required if the system is to be exposed to humidity and /or dust. Condensation water in the IP67 enclosure is not allowed.

## Assembly Information

- Assembly must not stress connectors or cables. A stress-free installation is mandatory.
- At the assembly of the CONNECTsystem pay attention on the tracking of the plugs into the slots of the connection places.

## Sales and Technical Support

### OSRAM GmbH

Hellabrunner Strasse 1  
D - 81536 München  
Germany  
[www.osram.com](http://www.osram.com)  
+49 (0)89 6213-0

Sales and technical support is given by the local OSRAM subsidiaries.  
On our world wide homepage all OSRAM subsidiaries are listed with complete address and phone numbers.

## Related and Further Information

- Datasheet LINEARlight OS-LM01A [www.osram.com](http://www.osram.com)
- The new dimension of light 53 S006 GB