

# Printed-circuit board connector - MC 1,5/18-GF-3,81-LR - 1817961

Please be informed that the data shown in this PDF Document is generated from our Online Catalog. Please find the complete data in the user's documentation. Our General Terms of Use for Downloads are valid (<http://phoenixcontact.com/download>)


Header, Nominal current: 8 A, Rated voltage (III/2): 160 V, Number of positions: 18, Pitch: 3.81 mm, Color: green, Contact surface: Tin, Mounting: Soldering



The figure shows a 10-position version of the product



## Key Commercial Data

|                      |   |
|----------------------|---|
| Packing unit         | 1   |
| GTIN                 | <br>4 046356 754705 |
| Custom tariff number | 85366990  |

## Technical data

### Dimensions

|                          |              |
|--------------------------|--------------|
| Length                   | 9.2 mm       |
| Pitch                    | 3.81 mm      |
| Dimension a              | 64.77 mm     |
| Length of the solder pin | 3.4 mm       |
| Pin dimensions           | 0,8 x 0,8 mm |
| Hole diameter            | 1.2 mm       |

### General

|                                  |                 |
|----------------------------------|-----------------|
| Range of articles                | MC 1,5/...GF-LR |
| Insulating material group        | IIIa            |
| Rated surge voltage (III/3)      | 2.5 kV          |
| Rated surge voltage (III/2)      | 2.5 kV          |
| Rated surge voltage (II/2)       | 2.5 kV          |
| Rated voltage (III/3)            | 160 V           |
| Rated voltage (III/2)            | 160 V           |
| Rated voltage (II/2)             | 250 V           |
| Connection in acc. with standard | EN-VDE          |
| Nominal current I <sub>N</sub>   | 8 A             |

# Printed-circuit board connector - MC 1,5/18-GF-3,81-LR - 1817961

## Technical data

### General

|  |       |
|--|-------|
| Maximum load current                   | 8 A   |
| Insulating material                    | PBT   |
| Flammability rating according to UL 94 | V0    |
| Color                                  | green |
| Number of positions                    | 18    |

## Classifications

### eCl@ss

|            |          |
|------------|----------|
| eCl@ss 4.0 | 272607xx |
| eCl@ss 4.1 | 27260701 |
| eCl@ss 5.0 | 27260701 |
| eCl@ss 5.1 | 27260701 |
| eCl@ss 6.0 | 27260704 |
| eCl@ss 7.0 | 27440402 |
| eCl@ss 8.0 | 27440402 |

### ETIM

|          |          |
|----------|----------|
| ETIM 3.0 | EC001121 |
| ETIM 4.0 | EC002637 |
| ETIM 5.0 | EC002637 |

### UNSPSC

|               |          |
|---------------|----------|
| UNSPSC 6.01   | 30211810 |
| UNSPSC 7.0901 | 39121409 |
| UNSPSC 11     | 39121409 |
| UNSPSC 12.01  | 39121409 |
| UNSPSC 13.2   | 39121409 |

## Approvals

### Approvals

---

#### Approvals

EAC / cULus Recognized / VDE Gutachten mit Fertigungsüberwachung / IEC60335 CB Scheme

---

#### Ex Approvals

---

#### Approvals submitted


# Printed-circuit board connector - MC 1,5/18-GF-3,81-LR - 1817961


## Approvals

### Approval details

|     |
|-----|
| EAC |
|-----|

|                    |       |       |
|--------------------|-------|-------|
| cULus Recognized   |       |       |
|                    | B     | D     |
| Nominal current IN | 8 A   | 8 A   |
| Nominal voltage UN | 300 V | 300 V |

|   |       |
|---|-------|
| VDE Gutachten mit Fertigungsüberwachung  |       |
| Nominal current IN  | 8 A   |
| Nominal voltage UN  | 160 V |

|   |       |
|---|-------|
| IECEE CB Scheme  |       |
| Nominal current IN  | 8 A   |
| Nominal voltage UN  | 160 V |

## Accessories

### Accessories

#### Coding element

Coding profile - CP-MSTB - 1734634

Coding profile, is inserted into the slot on the plug or inverted header, red insulating material



### Labeled terminal marker

Marker card - SK 3,81/2,8:FORTL.ZAHLEN - 0804109



Marker card, Card, white, labeled, Horizontal: Consecutive numbers 1 - 10, 11 - 20, etc. up to 91 - (99)100, Mounting type: Adhesive, for terminal block width: 3.81 mm, Lettering field: 3.81 x 2.8 mm

# Printed-circuit board connector - MC 1,5/18-GF-3,81-LR - 1817961

## Accessories

Fiber optics - MC 1,5/10-LWL 1,5-3,81 - 1841174

Fiber optics, Pitch: 3.81 mm, Number of positions: 10, Dimension a: 1.5 mm, Color: transparent



Fiber optics - MC 1,5/10-LWL 2,3-3,81 - 1841190

Fiber optics, Pitch: 3.81 mm, Number of positions: 10, Dimension a: 2.3 mm, Color: transparent



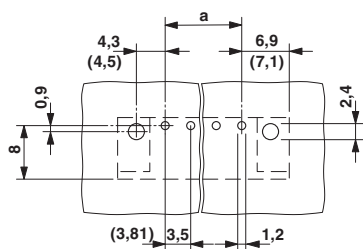
Fiber optics - MC 1,5/10-LWL 4-3,81 - 1841213

Fiber optics, Pitch: 3.81 mm, Number of positions: 10, Dimension a: 4 mm, Color: transparent

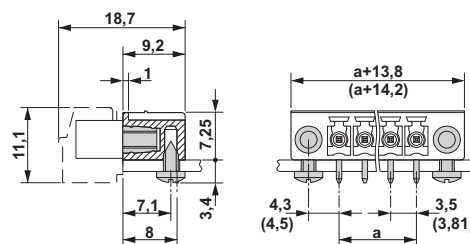


## Drawings

Drilling diagram

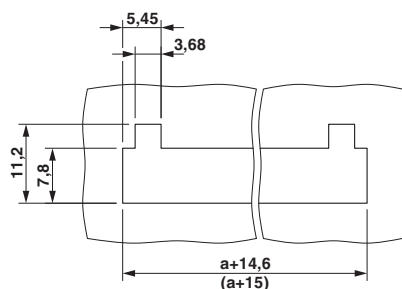


Dimensional drawing



# Printed-circuit board connector - MC 1,5/18-GF-3,81-LR - 1817961

Dimensional drawing



Diagram

Steckerteil: QC 0,5/5-ST(F)-3,81  
Grundgehäuse: MC(V) 1,5/5-G(F)-3,81

