

electrical auxiliaries for NC100

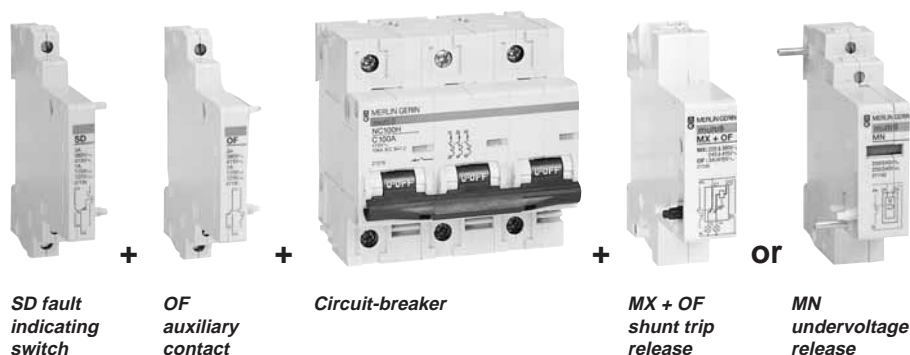
functions

Remote tripping and indication of NC100 circuit-breakers.

description

auxiliary combinations

- Mounted to the left of the circuit-breaker (SD and OF).
- Mounted to the right of the circuit-breaker (MX + OF and MN).



remote tripping

By means of an MX shunt trip or MN undervoltage release.

MX + OF shunt trip release

When energised, trips and opens the circuit-breaker with which it is associated:

- fitted with a cut-off contact
- fitted with an O + F contact that indicates the «open» or «closed» position of the circuit-breaker.

MN undervoltage release

When its supply voltage drops (between 70 and 35%) it trips and opens the circuit-breaker with which it is associated, and prevents reclosing of this circuit-breaker until its supply voltage is restored:


- complies with IEC 947-2 and IEC 157-1 standards
- use:
 - emergency stop via push button
 - safety feature on circuit supplying several machines preventing «uncontrolled» restarting of the motors.

MN time-delayed undervoltage release

Undervoltage release controlling opening of the circuit-breaker with which it is associated. Allows a 0.5 second time delay on a short supply interruption or voltage drop.

technical data

■ consumption of releases

type	voltage (V CA or V CC)		(W or VA)
MX	AC	pick-up	240
	DC	pick-up	200
MN	AC	holding	4,1
	DC	holding	4,1
MN 	AC	holding	4,1
	DC	holding	4,1

remote indication

OF contact

■ this auxiliary contact installed to the left of the circuit-breaker indicates the «open» or «closed» position of the circuit-breaker.

SD fault indicating switch

■ this auxiliary switch installed to the left of the circuit-breaker indicates the «tripped on fault» position of the circuit-breaker.
 ■ visualisation of the fault on the front panel by mechanical indicator lamp.

technical data

■ breaking capacity of the auxiliary switches

voltage (V AC or DC)		breaking capacity (A)
415 V	AC	3
≤ 240 V	AC	6
130 V	DC	1
≤ 48 V	DC	2
≤ 24 V	DC	6

technical data common to the auxiliaries

■ connection: terminal pads for two 1.5 mm² cables or one 2.5 mm² cable.

electrical auxiliaries for NC100

catalogue numbers



27136



27140



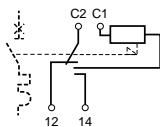
27132



27135

type	control voltage		catalogue number	width in mod. of 9 mm
	(V AC)	(V DC)		

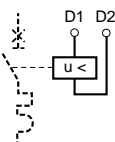
MX + OF shunt trip release



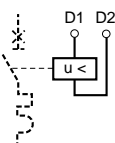
220...415		27136	2
110...220	110...125	27137	2
24...48	24...48	27138	2

MN undervoltage release

instantaneous	220...240	220...240	27140	2
---------------	-----------	-----------	--------------	---

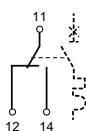


time-delayed	220...240	220...240	27143	2
--------------	-----------	-----------	--------------	---



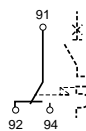
OF auxiliary contact

			27132	1
--	--	--	--------------	---



SD fault indicating switch

			27135	1
--	--	--	--------------	---



additional information

dimensions: page 31