

GF Piping Systems Datasheet

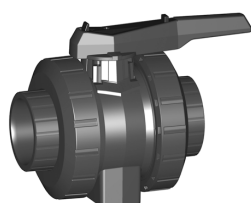
valid from
6/16/10

Ball valves

Ball valve type 546 PVC-U With solvent cement sockets metric



DN10/15 - 50

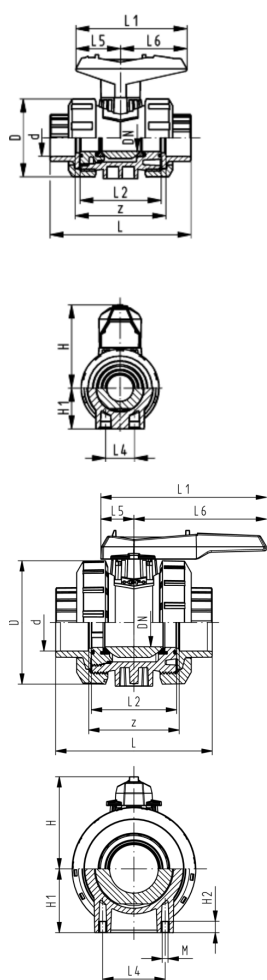


Model:

- For easy installation and removal
- Ball seals PTFE
- Without mounting inserts
- z-dimension, valve end and union nut are **not compatible** with type 346 (DN10/15-50) resp. type 370 (DN65-100)

Option:

- Individual configuration of the valve (see diagram)
- Multifunctional module with integrated limit switches
- Pneumatic or electric actuators from +GF+



d [mm]	DN [mm]	PN	kv-value ($\Delta p=1$ bar) [l/min]	EPDM Code	FPM Code	kg
16	10	16	71	161 546 001	161 546 011	0.150
20	15	16	185	161 546 002	161 546 012	0.150
25	20	16	350	161 546 003	161 546 013	0.230
32	25	16	700	161 546 004	161 546 014	0.330
40	32	16	1000	161 546 005	161 546 015	0.600
50	40	16	1600	161 546 006	161 546 016	0.800
63	50	16	3100	161 546 007	161 546 017	1.460
75	65	16	5000	161 546 008	161 546 018	4.900
90	80	16	7000	161 546 009	161 546 019	7.400
110	100	16	11000	161 546 010	161 546 020	11.600

d [mm]	D [mm]	H [mm]	H1 [mm]	L [mm]	L1 [mm]	L2 [mm]	L4 [mm]	L5 [mm]	L6 [mm]	z [mm]	closest inch
16	50	57	27	92	77	56	25	32	45	64	3/8
20	50	57	27	95	77	56	25	32	45	64	1/2
25	58	67	30	110	97	65	25	39	58	72	3/4
32	68	73	36	123	97	71	25	39	58	79	1
40	84	90	44	146	128	85	45	54	74	94	1 1/4
50	97	97	51	157	128	89	45	54	74	95	1 1/2
63	124	116	64	183	152	101	45	66	87	107	2
75	166	149	85	233	270	136	70	64	206	144	2 1/2
90	200	161	105	254	270	141	70	64	206	151	3
110	238	178	123	301	320	164	120	64	256	174	4

The technical data are not binding and not expressly warranted characteristics of the goods. They are subject to change. Our General Conditions of Sale apply.

Georg Fischer Piping Systems Ltd, Postfach, CH-8201 Schaffhausen/Switzerland
Phone +41 -(0)52-631 1111
e-mail: info.ps@georgfischer.com
Internet: <http://www.piping.georgfischer.com>