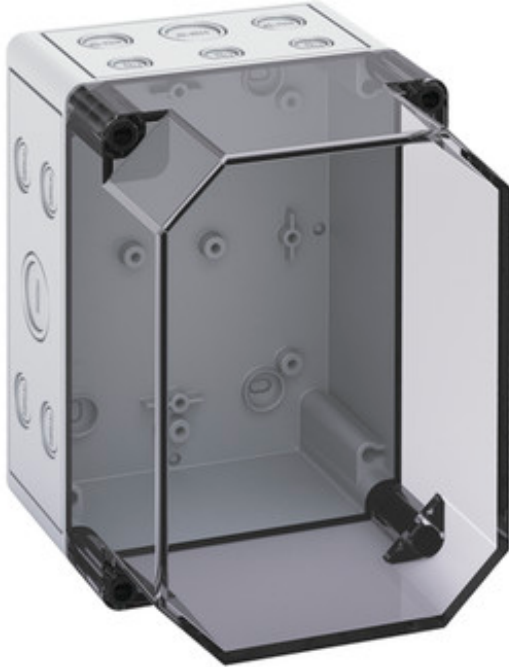




EMPTY ENCLOSURE

TK PS 1813-16-tm



TK PS 1813-16-tm

Empty enclosure

CUSTOMIZABLE

180 x 130 x 165 mm
Article number: 10701601

Empty enclosure, Base: polystyrene, Grey, similar to RAL 7035, Cover: polycarbonate, transparent

with metric knockouts



Technical data

Measures

Width:	180 mm
Length:	130 mm
Height:	165 mm
Inner height:	150 mm

Material

Base:	Polystyrene, grey, similar to RAL 7035
Cover:	Polycarbonate, transparent
Sealing:	Polyurethane
Cover screw:	Polyamide 6, fiber-glass reinforced

Accessory

TK MPS-1813 - Mounting plate

TK MPI-1813 - Mounting plate

TK ABL - External fixing lugs kit

HBA - Mounting material

NS 35-144 - Standard rail

TS 15-154 - Standard rail

Environmental attributes

Ambient temperature (min.):	-25 °C
Ambient temperature (max.):	40 °C
Ambient temperature (24 h):	35 °C
Max. rel. humidity at 25° C (short term):	95%
Max. rel. humidity at 40° C:	50%



EMPTY ENCLOSURE

TK PS 1813-16-tm

Other attributes

Ingress protection:	IP66 - acc. EN 60529 / DIN VDE 0470-1
Impact resistance:	IK07 acc. DIN EN 5012 / VDE 0470 Part 100
Protection class:	II - isolate protection acc. VDE 0106
Rated insulation voltage AC:	690 V
Rated insulation voltage DC:	1000 V
Heavy metals-free:	Yes
PVC-free:	Yes
Silicone-free:	Yes
Fitted for outdoor application:	No
Combustion behaviour acc. to UL 94:	HB acc. UL94
Combustion behaviour acc. to VDE:	650°C acc. VDE 0471/ EN 60695
sealable:	Yes
Weatherproof:	No
Cable entries:	Yes