

# DATASHEET

**ITEM: 39336**

**WHEEL U 175X50/60 BB SWIVEL TP M22**

## WHEEL SERIE

Monolithic aluminium wheels, suitable for high temp applications; available with ball bearings.

Wheel fitted with ball bearings.

## FORK DESCRIPTION

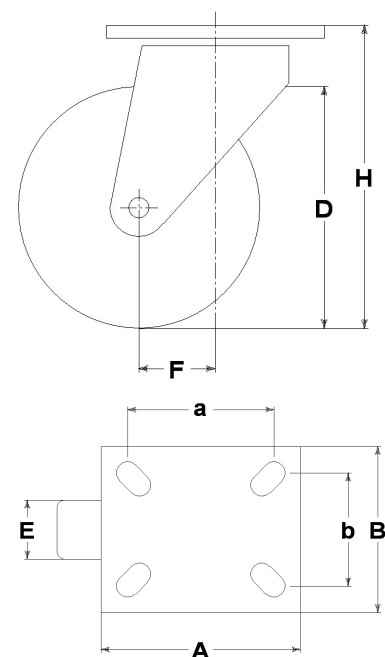
M22 series, Medium-light pressed steel fork assemblies, zincplated.

## TECHNICAL DETAILS

|                            |       |            |
|----------------------------|-------|------------|
| Wheel diameter             | (D)   | 175 mm     |
| Tyre width                 | (E)   | 50 mm      |
| Tyre width                 | (E)   | 20 mm      |
| Reference weight           |       | 0,995 kg   |
| Overall height             | (H)   | 203,5 mm   |
| Top plate outer dimensions | (AxB) | 135x110 mm |
| Bolt hole spacing          | (axb) | 105x75 mm  |
| Bolt hole spacing          | (axb) | 105x80 mm  |
| Fixing bolt diameter       | (g)   | 10 mm      |
| Offset                     | (F)   | 56 mm      |
| Fork width                 | (U)   | 60 mm      |
| Load capacity              |       | 300 kg     |

Possible options :

|                   |       |    |
|-------------------|-------|----|
| Wheel replacement | 39036 | CC |
| Brake             | FR    |    |



### GENERAL INFORMATION / RECOMMENDATIONS AND WARNINGS

The cited text and the complete catalogue in their most up-dated versions are available in our web-site [www.lagspa.eu/web/downloads](http://www.lagspa.eu/web/downloads). The dimensions, descriptions, specifications and illustrations herein are indicative and subject to variations without notice. The fact that products are illustrated herein does not necessarily imply they are available from stock nor does it place us under any obligation to supply them. Tests carried out refer to the original products with original accessories: the replacement of one of the components with others of different manufacture might prevent the same results from being achieved and will automatically invalidate any guarantee. Please contact our technical service concerning any special application.