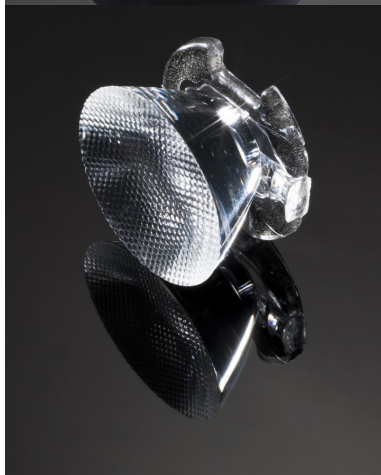



Ordering number CA12062_EMILY-D

Family	Emily	FWHM	10 degrees
Type	Assembly	Efficiency	90 %
LED	XP-G2	cd/lm	20.800
Color	Clear	Gerber File	Available
Diameter	26 mm		
Height	14.9 mm		
Style	Round		
Optic Material	PMMA		
Holder Material	-		
Fastening	Pin, tape		
Status	Ready		


Ordering number CA12064_EMILY-M

Family	Emily	FWHM	18 degrees
Type	Assembly	Efficiency	90 %
LED	XP-G2	cd/lm	10.100
Color	Clear	Gerber File	Available
Diameter	26 mm		
Height	15 mm		
Style	Round		
Optic Material	PMMA		
Holder Material	-		
Fastening	Pin, tape		
Status	Ready		

NOTE: The typical divergence will be changed by different color, chip size and chip position tolerance. The typical total divergence is the full angle measured where the luminous intensity is half of the peak value.



PRODUCT DATASHEET

Emily series

last update 11/3/2013

GENERAL INFORMATION

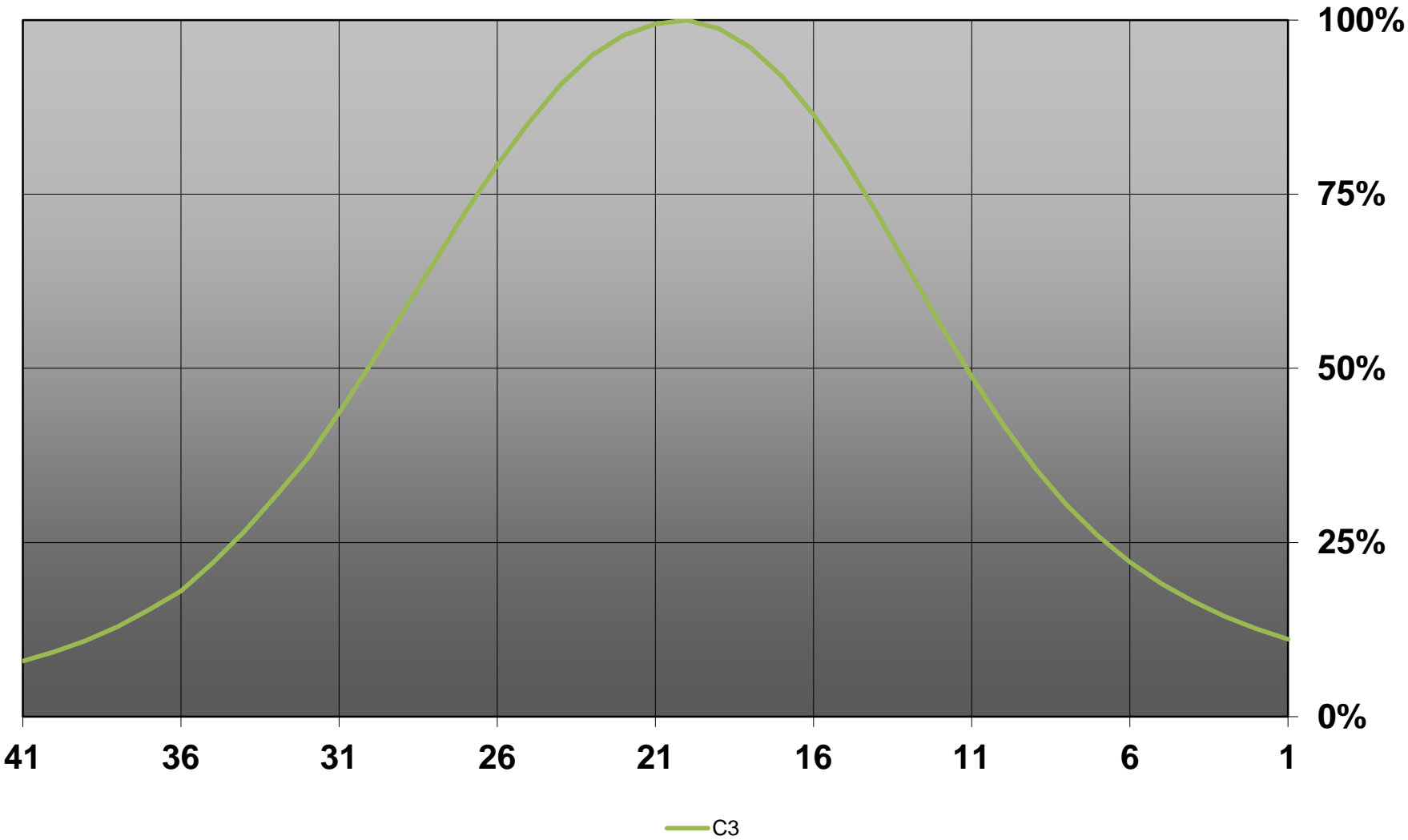
- Product series especially designed & optimized for XP-G2 series of LEDs.
- Special care taken to make light distribution as uniform as possible.
- Lens material optical grade PMMA with high UV and temperature resistance. Allows use of high current and temperature conditions.

Please find more information about used material from below:

http://ledil.fi/sites/default/files/Documents/Technical/Material/PMMA%20N%20UL94_Yellow%20Card.pdf

<http://ledil.fi/sites/default/files/Documents/Technical/Material/PMMA%20N%20PLEXIGLAS-Datasheet.pdf>

Relative intensity of CA12062_EMILY-D-(XPG2)



Relative intensity of CA12064_EMILY-M-(XPG2)

