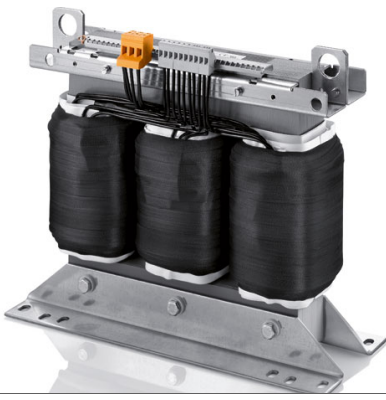


## TT3 6,3-4-4

### Isolating transformer

- Safety electrical isolation
- $\pm 5$  % secondary tapings for easy adaption of the voltage
- Screw mounting

Isolating transformer to IEC 61558-2-4, DIN EN 61558-2-4,  
VDE 0570 part 2-4



## TT3 6,3-4-4

### Isolating transformer



<b>Input data</b>	
Rated voltage	3 x 400 V
Short circuit voltage	≤3 %
Rated current	3 x 9,6 Aac
Frequency range	50 - 60 Hz
<b>Output data</b>	
Rated voltage	3 x 380 V; 3 x 400 V; 3 x 420 V
Rated current	3 x 9,6 Aac (3 x 380 V); 3 x 9,1 Aac (3 x 400 V); 3 x 8,6 Aac (3 x 420 V)
Power	6300 VA
<b>Standards and security</b>	
Protection index	IP 00
Safety class (prepared)	I
Ambient temperature max.	50 °C
Class of Insulation System	F
Test voltage	4800 V
<b>General data</b>	
Vector group	Dyn 5
Power loss	290.0 W
<b>Mechanical data</b>	
Type	open type
Core type	3UI 180/63
Terminals	screw type terminals
Fixing method	mounting brackets
Fixing screws	-
Dimensions W x H x D	410 x 360 x 175
Weight	55.00 kg

**BLOCK** Transformatoren-Elektronik GmbH

Max-Planck-Straße 36-46

27283 Verden

Germany

Phone +49 4231 678-0

Fax +49 4231 678-177