

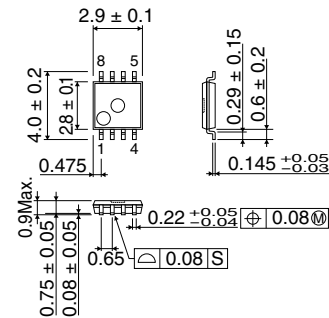
Audio driver for cellular phones

BH7823AFVM

● Description

BH7823AFVM is an audio driver IC developed for mobile audio appliances such as cellular phones. This driver has achieved low voltage driving and low power consumption. Audio signal can be generated from any various audio appliances. (This speaker can drive the load of 4 , 8 , and 12 .) Achieve high output power supply by applying BTL. Suspend control can keep the circuit current at 0 μ A (Typ.) when it is not in use.

● Dimension (Units : mm)



MSOP8

● Features

- 1) BTL monaural audio power amplifier
- 2) High power 500mW/8 /BTL output
- 3) Wide operating voltage range
- 4) For active/shutdown MODE
- 5) Built-in anti-pop circuit/thermal shutdown circuit
- 6) Perfect for cellular phones, palm PC, hand-held appliances

● Applications

Audio driver for cellular phones

● Absolute Maximum Ratings (Ta=25°C)

| Parameter | Symbol | Limits | Unit |
|-----------------------------|--------|------------|------|
| Applied voltage | VccMAX | 6.0 | V |
| Power dissipation | Pd | 370 * | mW |
| Operating temperature range | Topr | -20 ~ +70 | °C |
| Storage temperature range | Tstg | -55 ~ +125 | °C |

Derating : 3.5mW/°C for operation above Ta=25°C
 PCB (70mmx70mm, t=1.6mm) glass epoxy mounting.

● Recommended Operating Conditions (Ta=25°C)

| Parameter | Symbol | Min. | Typ. | Max. | Unit |
|-------------------------|------------------|------|------|------|------|
| Operating voltage range | V _{CCS} | 2.8 | – | 5.5 | V |

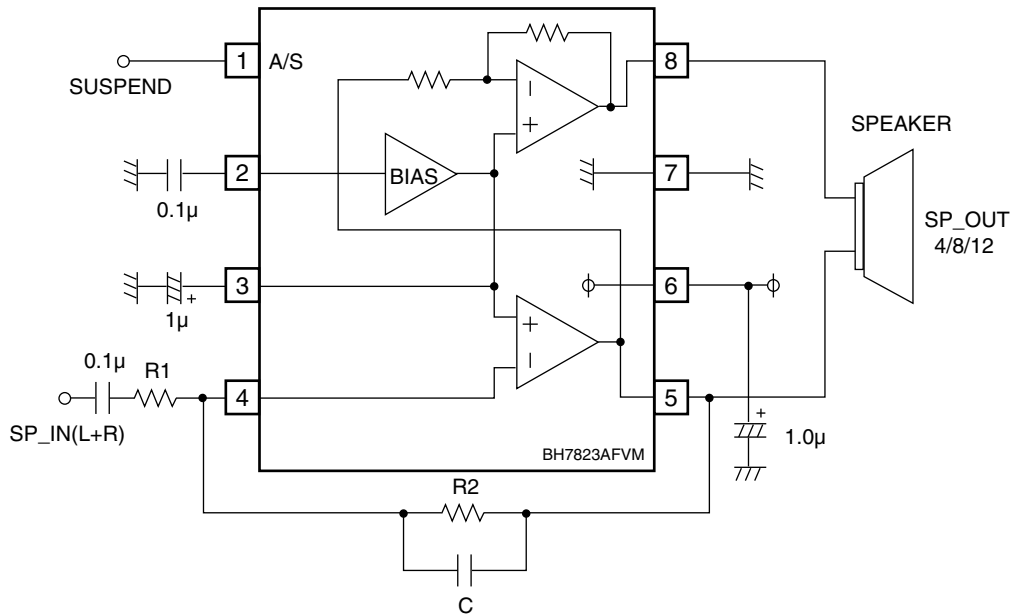
This product is not designed for protection against radioactive rays.

● Electrical characteristics (Unless otherwise noted; Ta=25°C, V_{CC}=3.6V, f=1kHz, R_L=8 Ω)

| Parameter | Symbol | Min. | Typ. | Max. | Unit | Conditions |
|-------------------------|-------------------|------------------------|------|-----------------|------|--|
| Circuit current 1 | I _{CC1} | – | 3 | 7 | mA | No signal Active MODE |
| Circuit current 2 | I _{CC2} | – | 0 | 2 | μA | No signal Suspend MODE |
| Voltage gain 1 | G _{V1} | 9.5 | 11.5 | 13.5 | dB | V _{IN} =-20dBV 1st OPAMP gain |
| Voltage gain 2 | G _{V2} | -2.0 | 0 | 2.0 | dB | V _{IN} =-20dBV 2nd OPAMP gain |
| Maximum output voltage | V _{OM} | 4.8 | 6.8 | – | dBV | DSTN=10% BTL 1 |
| Output distortion rate | DSTN | – | 0.2 | 1.0 | % | V _{IN} =-20dBV SE 1 |
| Output residual noise | V _{NO} | – | -94 | -80 | dBV | No signal, SE Active MODE 2 |
| Suspend attenuation | G _S | – | -107 | -80 | dBV | V _{IN} =-20dBV BTL 2 |
| BIAS set voltage | V _{BIAS} | 1.6 | 1.8 | 2.0 | V | 2PIN DC voltage |
| Suspend hold voltage/ H | V _{SH} | V _{CC} /3+0.8 | – | V _{CC} | V | Active MODE Hold voltage |
| Suspend hold voltage/ L | V _{SL} | 0 | – | 0.5 | V | Suspend MODE Hold voltage |

1: 0.4~30kHz 2: DIN AUDIO

● Application Circuit



Notes

- No technical content pages of this document may be reproduced in any form or transmitted by any means without prior permission of ROHM CO.,LTD.
- The contents described herein are subject to change without notice. The specifications for the product described in this document are for reference only. Upon actual use, therefore, please request that specifications to be separately delivered.
- Application circuit diagrams and circuit constants contained herein are shown as examples of standard use and operation. Please pay careful attention to the peripheral conditions when designing circuits and deciding upon circuit constants in the set.
- Any data, including, but not limited to application circuit diagrams information, described herein are intended only as illustrations of such devices and not as the specifications for such devices. ROHM CO.,LTD. disclaims any warranty that any use of such devices shall be free from infringement of any third party's intellectual property rights or other proprietary rights, and further, assumes no liability of whatsoever nature in the event of any such infringement, or arising from or connected with or related to the use of such devices.
- Upon the sale of any such devices, other than for buyer's right to use such devices itself, resell or otherwise dispose of the same, no express or implied right or license to practice or commercially exploit any intellectual property rights or other proprietary rights owned or controlled by
- ROHM CO., LTD. is granted to any such buyer.
- Products listed in this document use silicon as a basic material.
Products listed in this document are no antiradiation design.

The products listed in this document are designed to be used with ordinary electronic equipment or devices (such as audio visual equipment, office-automation equipment, communications devices, electrical appliances and electronic toys).

Should you intend to use these products with equipment or devices which require an extremely high level of reliability and the malfunction of which would directly endanger human life (such as medical instruments, transportation equipment, aerospace machinery, nuclear-reactor controllers, fuel controllers and other safety devices), please be sure to consult with our sales representative in advance.

About Export Control Order in Japan

Products described herein are the objects of controlled goods in Annex 1 (Item 16) of Export Trade Control Order in Japan.

In case of export from Japan, please confirm if it applies to "objective" criteria or an "informed" (by MITI clause) on the basis of "catch all controls for Non-Proliferation of Weapons of Mass Destruction.