

Jun.1.2018 Copyright 2018 HIROSE ELECTRIC CO., LTD. All Rights Reserved.
 In case of consideration for using Automotive equipment /
 device which demand high reliability, kindly contact our sales window correspondents.

Fig.2(1:1)

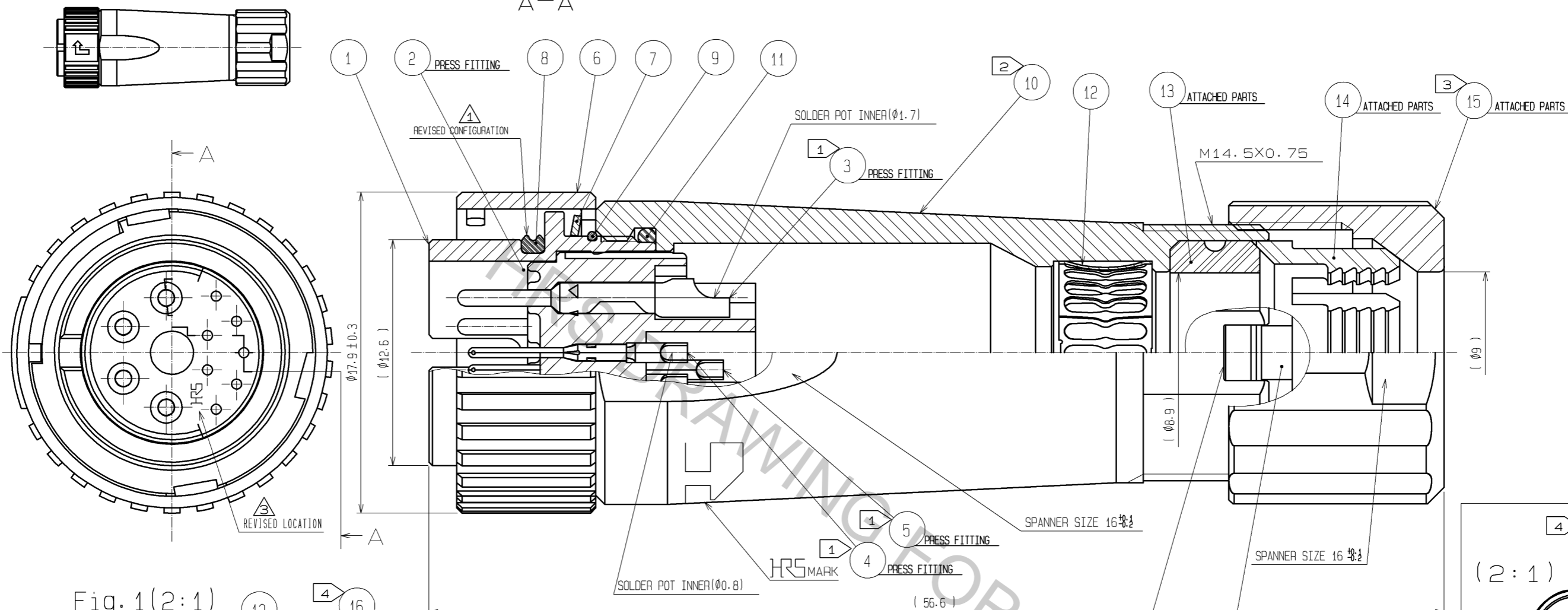
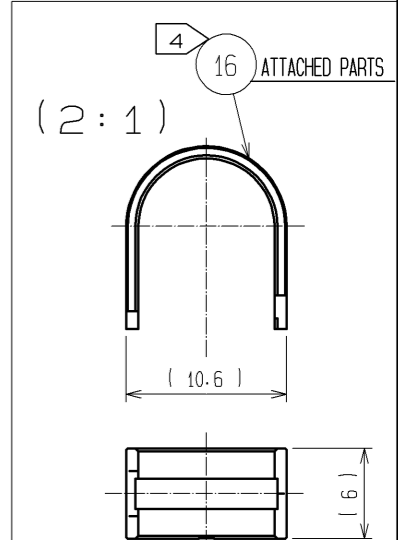
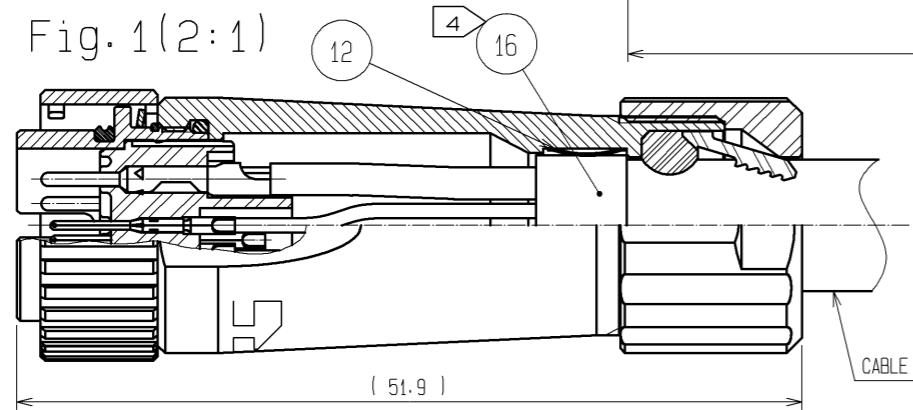


Fig.1(2:1)



- NOTES
- ① PLATING(REF.NO.③,④,⑤)
 CONTACT AREA : GOLD 0.2μm min
 OTHERS : GOLD AND NICKEL
 UNDER PLATING : NICKEL 2μm min
 - ② THE RECOMMENDED CLAMP TORQUE OF REF.NO.② TO BE 1.5 TO 2N·m.
 THREAD LOCKER TO THE THREADED PORTION OF REF.NO.② IS RECOMMENDED TO PREVENT REF.NO.② FROM LOOSING.
 RECOMMENDED THREAD LOCKER:LOCTITE 271, HENKEL JAPAN LTD.
 - ③ THE RECOMMENDED CLAMP TORQUE OF REF.NO.③ TO BE 1 TO 1.5N·m.
 THREAD LOCKER AND LOCK PRIMER TO THE THREADED PORTION M14.5X0.75 OF REF.NO.③ IS RECOMMENDED
 TO PREVENT REF.NO.③ FROM LOOSING.
 RECOMMENDED THREAD LOCKER AND LOCK PRIMER : LOCTITE 271, LOCK PRIMER 7649, HENKEL JAPAN LTD.
 - ④ FASTEN REF.NO.④ TO THE CABLE WITH THE CABLE CRIMPING TOOL.
 AND MAKE REF.NO.④ CONTACT WITH REF.NO.④ (REFER TO Fig.1).
 REFER TO THE TECHNICAL SPECIFICATION ATAD-C0099 FOR DETAILS.
 APPLICABLE CABLE CRIMPING TOOL : LF-TC-01 (CL150-0234-6)
 - ⑤ APPLICABLE CABLE ASSEMBLY FIXTURE : LF13BP-T01 (CL150-0237-4)
 CABLE ASSEMBLY FIXTURE IS USED AS A RECEPTACLE STAND OF EXTRACT AND THE PART NUMBER ⑤ OF AN ASSEMBLY.
 - ⑥ Fig.2 SHOWS THE APPEARANCE AFTER ASSEMBLY.
 - ⑦ ROTATION EXAMPLES OF REF.NOS.⑦ AND ⑧ TO ⑧ ARE SHOWN.

8	CHLOROPRENE RUBBER	(BLACK)	16	BRASS	NICKEL PLATING
7	STAINLESS STEEL		15	PPS	(NATURAL·BROWN) UL94V-0
6	ZINC ALLOY	NICKEL PLATING	14	POLYAMIDE	(NATURAL·MILKY WHITE) UL94V-0
5	COPPER ALLOY	①	13	CHLOROPRENE RUBBER	(BLACK)
4	COPPER ALLOY	①	12	PHOSPHOR BRONZE	NICKEL PLATING
3	COPPER ALLOY	①	11	CHLOROPRENE RUBBER	(BLACK)
2	PPS	(BLACK) UL94V-0	10	ZINC ALLOY	NICKEL PLATING
1	ZINC ALLOY	NICKEL PLATING	9	STAINLESS	
NO.	MATERIAL	FINISH . REMARKS	NO.	MATERIAL	FINISH . REMARKS
UNITS	mm	SCALE	4 : 1	COUNT	1
DESCRIPTION OF REVISIONS			DESIGNED	CHECKED	DATE
DIS-C-000768			DS. MATSUNE	YH. YAMADA	08.01.08
APPROVED : MR. YOSHIDA			05.01.05	DRAWING NO. EDC3-114383-00	
CHECKED : MO. SATOH			05.01.05	PART NO. LF13WBP-11P	
DESIGNED : YH. YAMADA			05.01.05	CODE NO. CL136-0012-8-00	
DRAWN : YH. YAMADA			05.01.05	③ 1/1	