

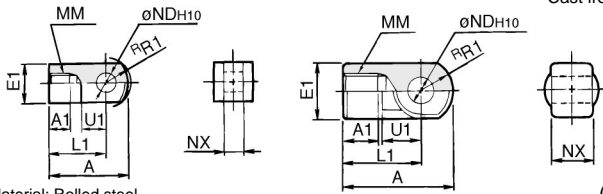
Series CG1 Accessory Dimensions

Single Knuckle Joint

I-G02, G03

I-G04, G05, G08, G10

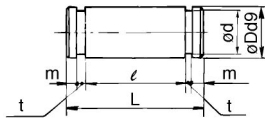
Material: Cast iron



Material: Rolled steel

Part No.	Bore size (mm)	A	A1	E1	L1	MM	R1	U1	NDH10	NX
I-G02	20	34	8.5	□16	25	M8 X 1.25	10.3	11.5	8 ^{+0.058} ₀	8 ^{-0.2} _{-0.4}
I-G03	25, 32	41	10.5	□20	30	M10 X 1.25	12.8	14	10 ^{+0.058} ₀	10 ^{-0.2} _{-0.4}
I-G04	40	42	14	∅22	30	M14 X 1.5	12	14	10 ^{+0.058} ₀	18 ^{-0.3} _{-0.5}
I-G05	50, 63	56	18	∅28	40	M18 X 1.5	16	20	14 ^{+0.070} ₀	22 ^{-0.3} _{-0.5}
I-G08	80	71	21	∅38	50	M22 X 1.5	21	27	18 ^{+0.070} ₀	28 ^{-0.3} _{-0.5}
I-G10	100	79	21	∅44	55	M26 X 1.5	24	31	22 ^{+0.084} ₀	32 ^{-0.3} _{-0.5}

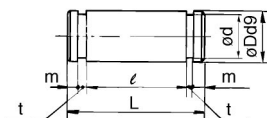
Knuckle Pin



Material: Carbon steel

Part No.	Bore size (mm)	Dd9	L	d	ℓ	m	t	Applicable snap ring
IY-G02	20	8 ^{-0.040} _{-0.076}	21	7.6	16.2	1.5	0.9	C-8 type for pivot
IY-G03	25, 32	10 ^{-0.040} _{-0.076}	25.6	9.6	20.2	1.55	1.15	C-10 type for pivot
IY-G04	40	10 ^{-0.040} _{-0.076}	41.6	9.6	36.2	1.55	1.15	C-10 type for pivot
IY-G05	50, 63	14 ^{-0.050} _{-0.093}	50.6	13.4	44.2	2.05	1.15	C-14 type for pivot
IY-G08	80	18 ^{-0.050} _{-0.093}	64	17	56.2	2.55	1.35	C-18 type for pivot
IY-G10	100	22 ^{-0.065} _{-0.117}	72	21	64.2	2.55	1.35	C-22 type for pivot

Clevis Pin

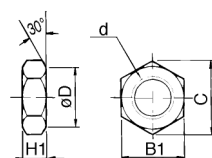


Material: Carbon steel

Part No.	Bore size (mm)	Dd9	L	d	ℓ	m	t	Applicable snap ring
CD-G02	20	8 ^{-0.040} _{-0.076}	43.4	7.6	38.6	1.5	0.9	C-8 type for pivot
CD-G25	25	10 ^{-0.040} _{-0.076}	48	9.6	42.6	1.55	1.15	C-10 type for pivot
CD-G03	32	12 ^{-0.050} _{-0.093}	59.4	11.5	54	1.55	1.15	C-12 type for pivot
CD-G04	40	14 ^{-0.050} _{-0.093}	71.4	13.4	65	2.05	1.15	C-14 type for pivot
CD-G05	50	16 ^{-0.050} _{-0.093}	86	15.2	79.6	2.05	1.15	C-16 type for pivot
CD-G06	63	18 ^{-0.050} _{-0.093}	105.4	17	97.8	2.45	1.35	C-18 type for pivot

* Clevis pins and knuckle pins are common for bore size ∅80 and ∅100.

Rod End Nut



Material: Rolled steel

Part No.	Bore size (mm)	d	H1	B1	C	D
NT-02	20	M8 X 1.25	5	13	(15)	12.5
NT-03	25, 32	M10 X 1.25	6	17	(19.6)	16.5
NT-G04	40	M14 X 1.5	8	19	(21.9)	18
NT-05	50, 63	M18 X 1.5	11	27	(31.2)	26
NT-08	80	M22 X 1.5	13	32	(37.0)	31
NT-10	100	M26 X 1.5	16	41	(47.3)	39

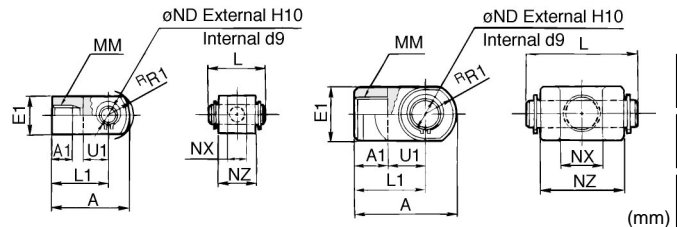
Double Knuckle Joint

Y-G02, G03

Material: Rolled steel

Y-G04, G05, G08, G10

Material: Cast iron



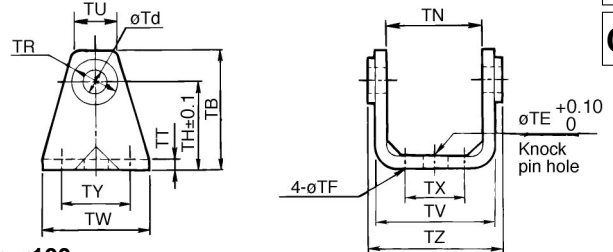
Part No.	Bore size (mm)	A	A1	E1	L1	MM	R1	U1	ND	NX	NZ	L	Applicable pin
Y-G02	20	34	8.5	□16	25	M8 X 1.25	10.3	11.5	8	8 ^{+0.4} _{+0.2}	16	21	IY-G02
Y-G03	25, 32	41	10.5	□20	30	M10 X 1.25	12.8	14	10	10 ^{+0.4} _{+0.2}	20	25.6	IY-G03
Y-G04	40	42	16	∅22	30	M14 X 1.5	12	14	10	18 ^{+0.5} _{+0.3}	36	41.6	IY-G04
Y-G05	50, 63	56	20	∅28	40	M18 X 1.5	16	20	14	22 ^{+0.5} _{+0.3}	44	50.6	IY-G05
Y-G08	80	71	23	∅38	50	M22 X 1.5	21	27	18	28 ^{+0.5} _{+0.3}	56	64	IY-G08
Y-G10	100	79	24	∅44	55	M26 X 1.5	24	31	22	32 ^{+0.5} _{+0.3}	64	72	IY-G10

* Knuckle pins and snap rings are attached.

Pivot Bracket

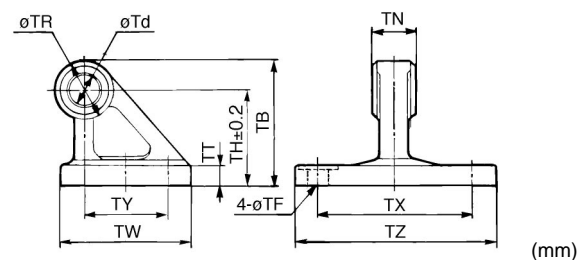
∅20 to ∅63

Material: Rolled steel



∅80 to ∅100

Material: Cast iron



Part No.	Bore size (mm)	TB	Td	TE	TF	TH	TN	TR	TT
CG-020-24A	20	36	8	10	5.5	25	(29.3)	13	3.2
CG-025-24A	25	43	10	10	5.5	30	(33.1)	15	3.2
CG-032-24A	32	50	12	10	6.6	35	(40.4)	17	4.5
CG-040-24A	40	58	14	10	6.6	40	(49.2)	21	4.5
CG-050-24A	50	70	16	20	9	50	(60.4)	24	6
CG-063-24A	63	82	18	20	11	60	(74.6)	26	8
CG-080-24A	80	73	18	—	11	55	28 ^{-0.1} _{-0.3}	36	11
CG-100-24A	100	90	22	—	13.5	65	32 ^{-0.1} _{-0.3}	50	12

Part No.	Bore size (mm)	TU	TV	TW	TX	TY	TZ	Applicable pin O.D.
CG-020-24A	20	18.1	35.8	42	16	28	38.3	8d9 ^{-0.040} _{-0.076}
CG-025-24A	25	20.7	39.8	42	20	28	42.1	10d9 ^{-0.040} _{-0.076}
CG-032-24A	32	23.6	49.4	48	22	28	53.8	12d9 ^{-0.050} _{-0.093}
CG-040-24A	40	27.3	58.4	56	30	30	64.6	14d9 ^{-0.050} _{-0.093}
CG-050-24A	50	29.7	72.4	64	36	36	79.2	16d9 ^{-0.050} _{-0.093}
CG-063-24A	63	34.3	90.4	74	46	46	97.2	18d9 ^{-0.050} _{-0.093}
CG-080-24A	80	—	—	72	85	45	110	18d9 ^{-0.050} _{-0.093}
CG-100-24A	100	—	—	93	100	60	130	22d9 ^{-0.065} _{-0.117}

Accessory.....SCG1 [Bore size] #11

