

## Radio interference suppression filter, single phase **HLE 110-230/20**



### Advantages

For enhanced requirements

Single-stage filter concept

Efficient filter effect against line-bound interference emissions

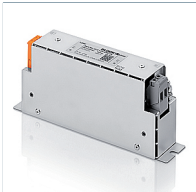
Increase in the interference immunity of the connected consumer

### Applications

Radio interference suppression filter for line-side interference suppression of single devices, frequency converters or as group interference suppression.

### Standards

### Approvals



## Radio interference suppression filter, single phase HLE 110-230/20

Type		HLE 110-230/20
Electrical data	Operating data	
	Rated voltage	250 Vac
	Voltage range	0 - 250 Vac
	Rated current	20 A
	Leakage current (50 Hz)*	8.50 mA
	Rated frequency	50 - 60 Hz
	Overrating Capacity	150 %, short-time
	Standards	
	Classification	EMI filter
	Environment	
Climatic category	25/085/21[in accordance with EN 60068-1]	
Ambient temperature max.	50 °C	
Safety and protection		
Type	Metal enclosure	
Protection index	IP 20	
Safety class (prepared)	I	
Test voltage	1700 Vdc Phase/Phase, 2700 Vdc Phase/PE	
Notes		
*	Leakage current measured against the maximum permissible input voltage fluctuation in accordance with IEC 38 ±10 %	
Order numbers		
Order Number	<b>HLE 110-230/20</b>	

Type		HLE 110-230/20
Mechanical data	Terminal and mounting	
	Connections phase/N	Screw clamp, 4 mm <sup>2</sup>
	Connections PE	Bolt, M5
	Fixing method	Mounting lugs
	Fixing screws	M5
Measures and weights		
Weight	0.80 kg	

