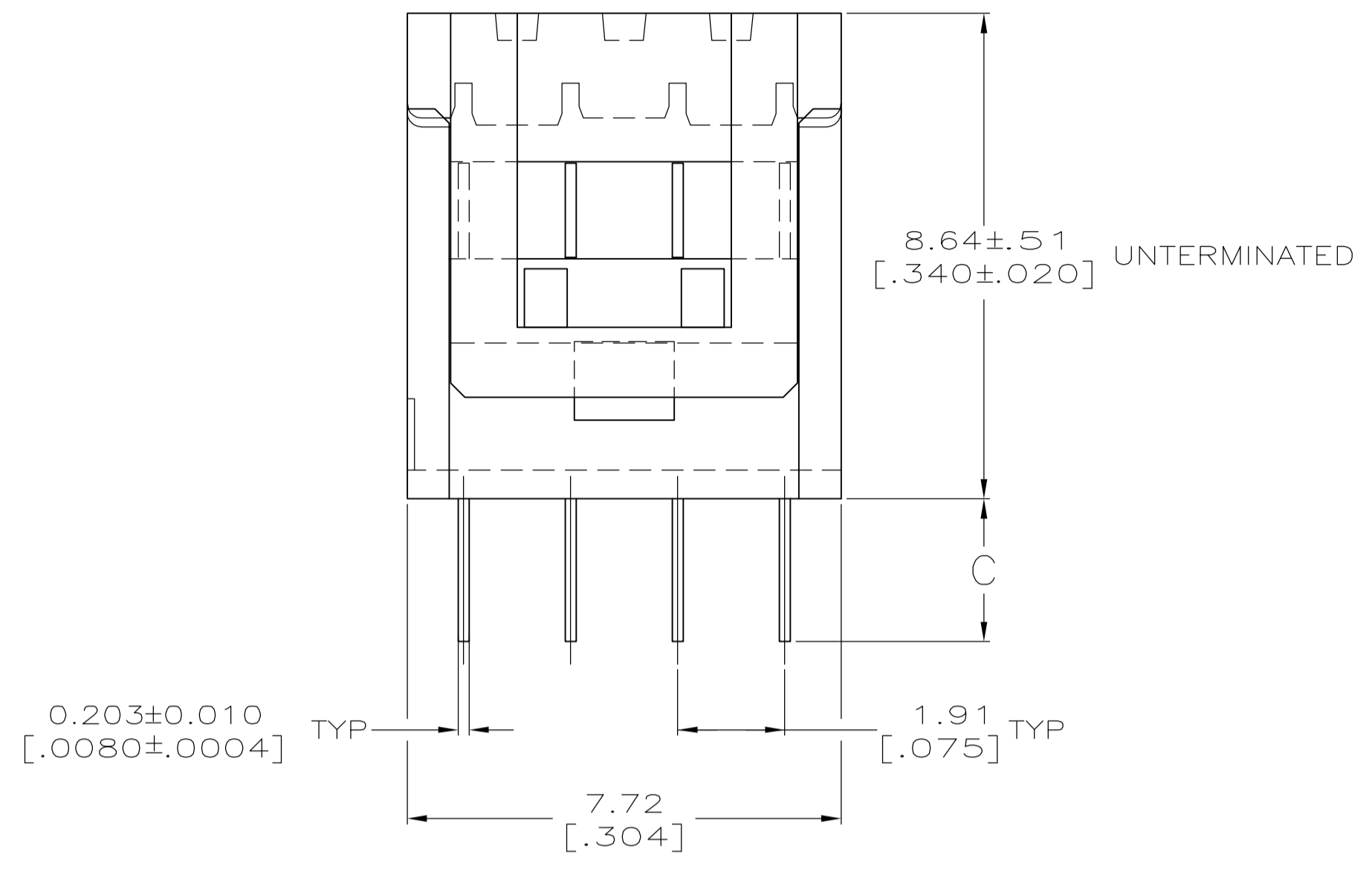
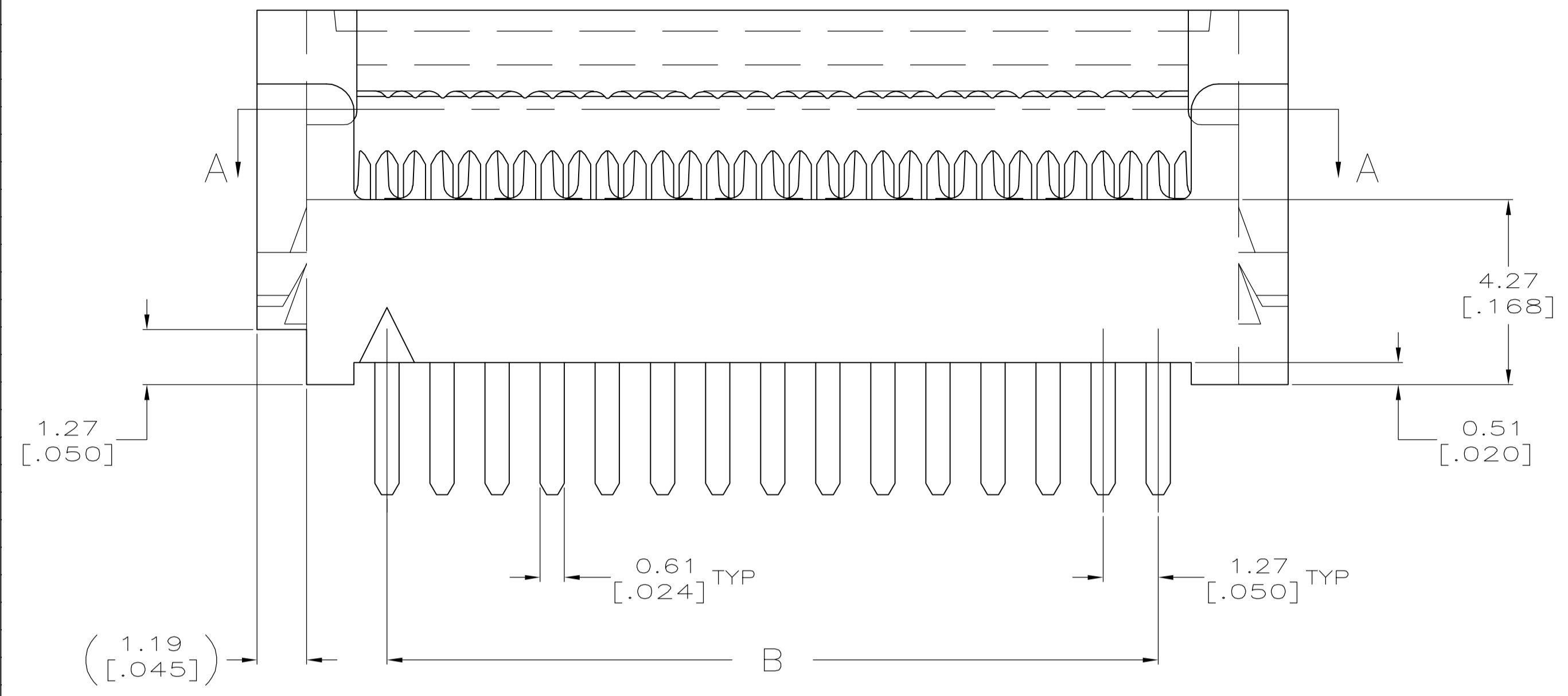
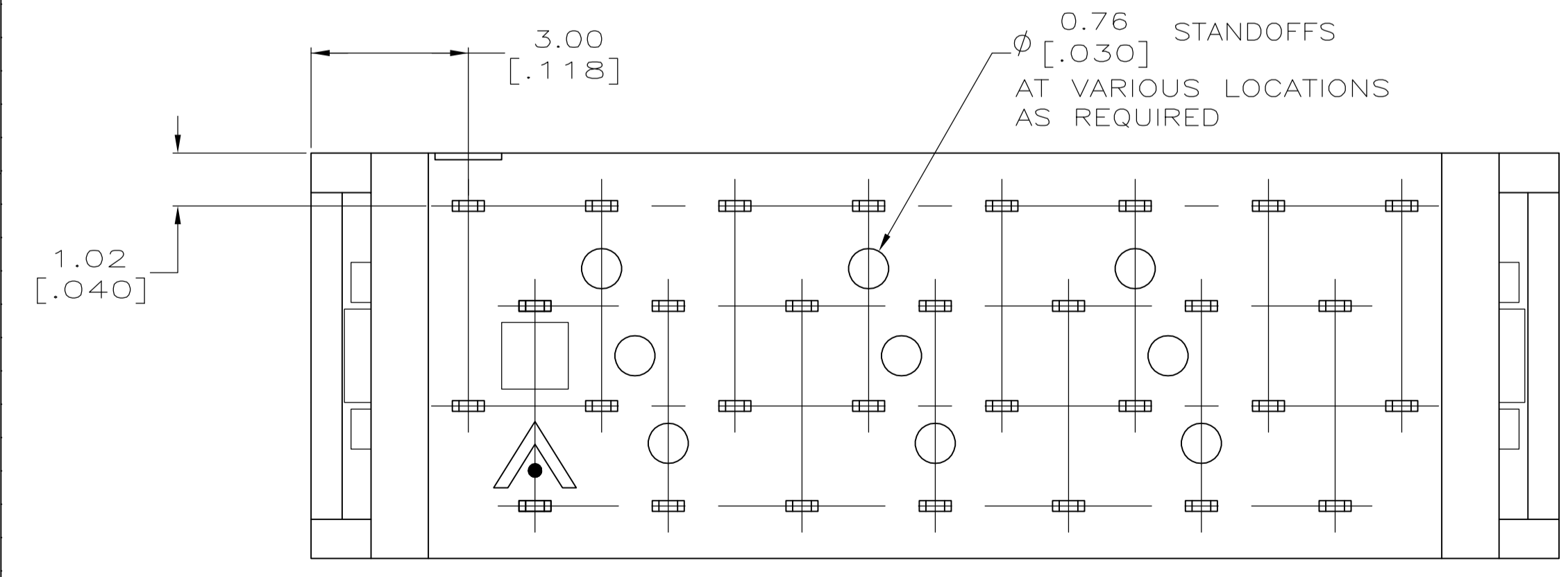
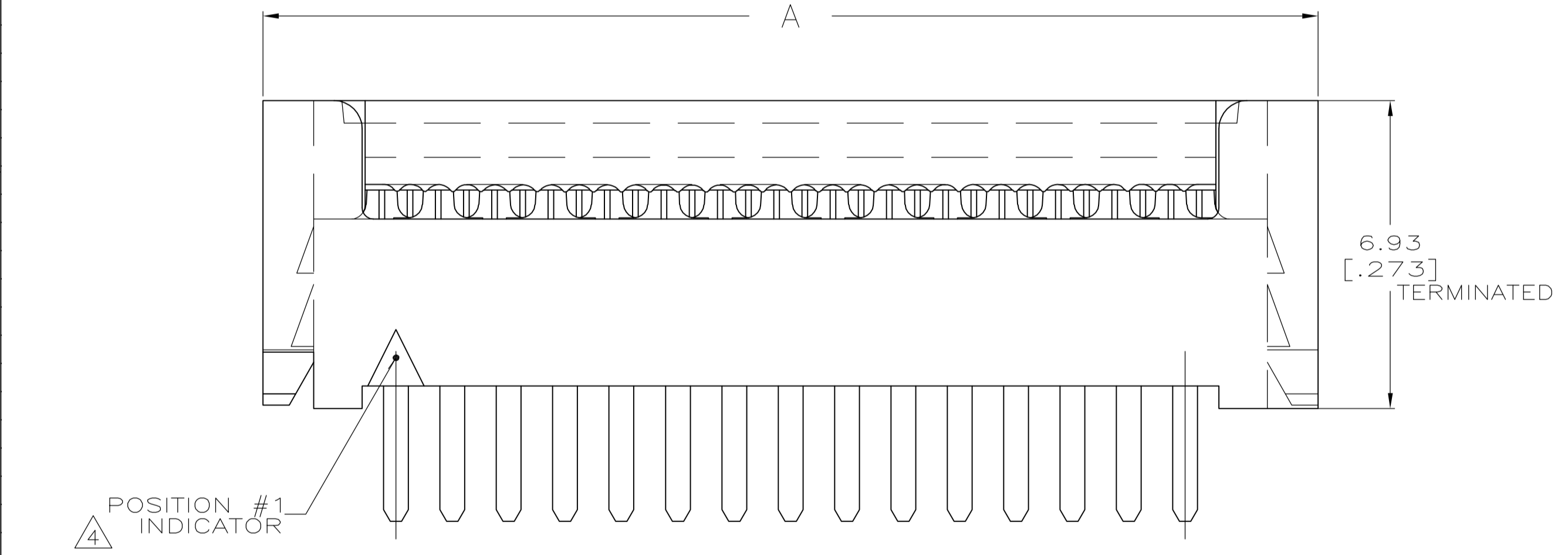


LOC		DIST		REVISIONS			
GP	00	REV	DATE	BY	APP'D		
D		REVISED PER ECO-06-025159	27OCT06	JDP	CWR		



- △ HOUSING: UL RATED 94V-0 LCP THERMOPLASTIC, COLOR BLACK.
- △ COVER: UL RATED 94V-0 POLYESTER MOLDING COMPOUND, COLOR BLACK.
- △ CONTACTS: COPPER ALLOY.
- △ CONTACTS: 0.00254 [.000100] MIN MATTE TIN OVER 0.00127 [.000050] MIN NICKEL.
- △ POSITION 1 INDICATOR, OMITTED FOR PART NUMBER 2-5111595-1.
- △ VOID CORES MAY OR MAY NOT BE PRESENT BETWEEN ANY 2 ROWS OF CONTACTS.



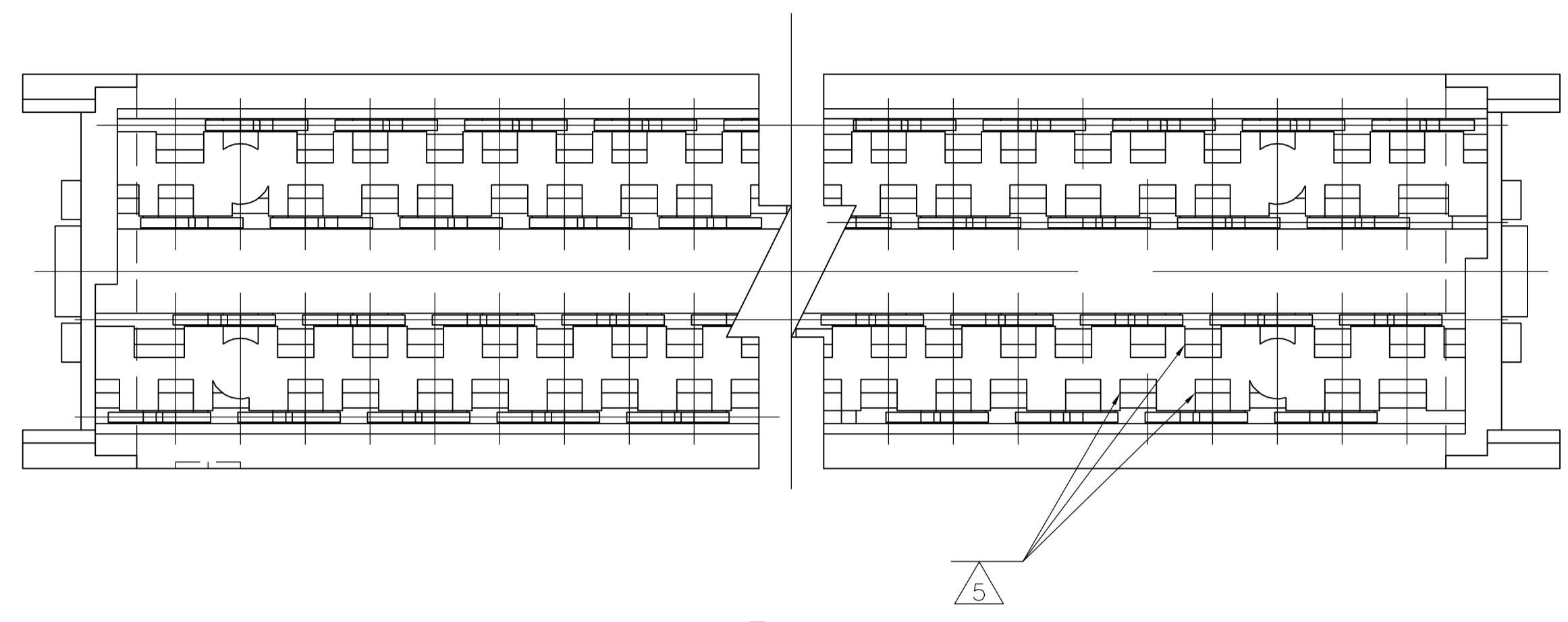
PCB LAYOUT	C	B	A	POSN	PART NO
#2	3.30 [.130]	49.53 [1.950]	55.52 [2.186]	80	2-5111595-2 △
#2	2.54 [.100]	41.91 [1.650]	47.90 [1.886]	68	2-5111595-1
#2	2.54 [.100]	16.51 [.650]	22.50 [.886]	28	2-5111595-0
#2	2.54 [.100]	41.91 [1.650]	47.90 [1.886]	68	1-5111595-9
#1	2.54 [.100]	27.94 [1.100]	33.93 [1.336]	46	1-5111595-7
#2	2.54 [.100]	62.23 [2.450]	68.22 [2.686]	100	1-5111595-6
#2	2.54 [.100]	49.53 [1.950]	55.52 [2.186]	80	1-5111595-5
#2	2.54 [.100]	44.45 [1.750]	50.44 [1.986]	72	1-5111595-4
#2	2.54 [.100]	39.37 [1.550]	45.36 [1.786]	64	1-5111595-3
#2	2.54 [.100]	36.83 [1.450]	42.82 [1.686]	60	1-5111595-2
#1	2.54 [.100]	30.48 [1.200]	36.47 [1.436]	50	1-5111595-1
#2	2.54 [.100]	26.67 [1.050]	32.66 [1.286]	44	1-5111595-0
#2	2.54 [.100]	24.13 [.950]	30.12 [1.186]	40	5111595-9
#1	2.54 [.100]	20.32 [.800]	26.31 [1.036]	34	5111595-8
#1	2.54 [.100]	17.78 [1.700]	23.77 [1.936]	30	5111595-7
#1	2.54 [.100]	15.24 [1.600]	21.23 [1.836]	26	5111595-6
#2	2.54 [.100]	13.97 [1.550]	19.96 [1.786]	24	5111595-5
#2	2.54 [.100]	11.43 [1.450]	17.42 [1.686]	20	5111595-4
#2	2.54 [.100]	8.89 [1.350]	14.88 [1.586]	16	5111595-3
#1	2.54 [.100]	7.62 [1.300]	13.61 [1.536]	14	5111595-2
#1	2.54 [.100]	5.08 [1.200]	11.07 [1.436]	10	5111595-1

THIS DRAWING IS A CONTROLLED DOCUMENT.

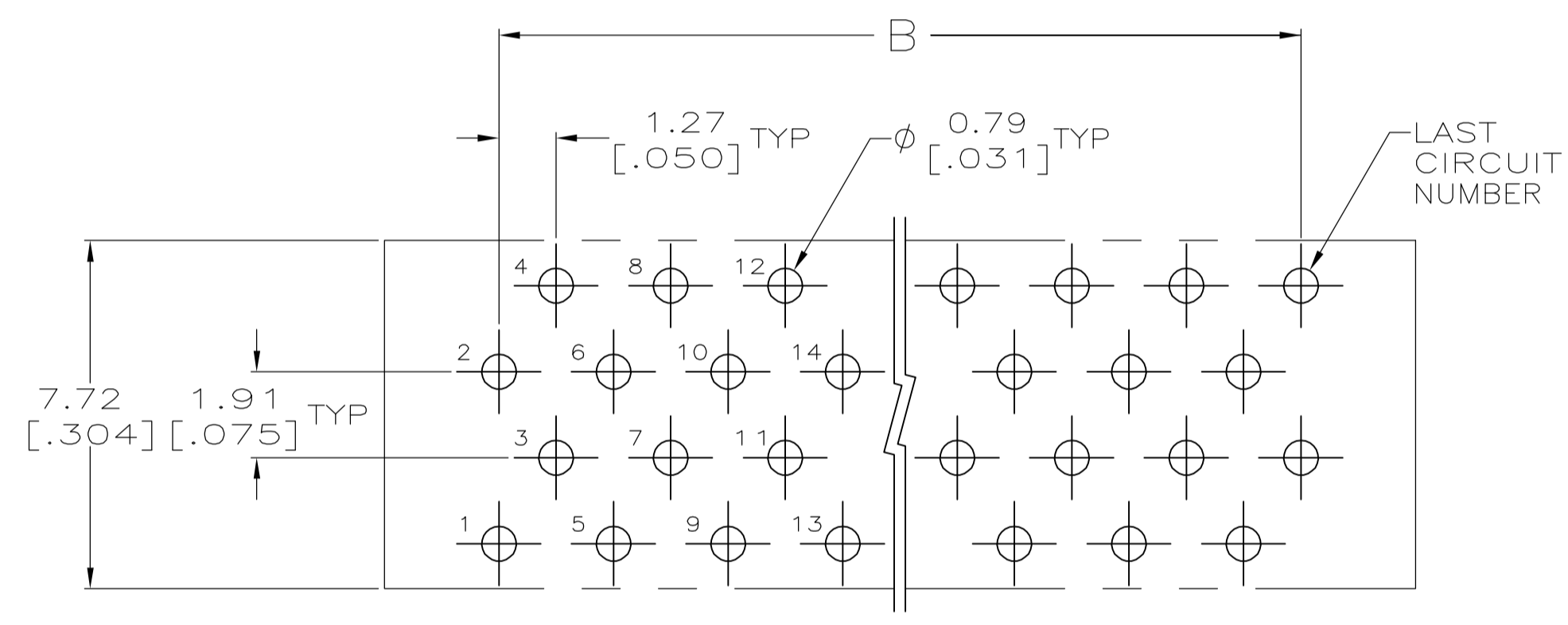
DIMENSIONS: mm [NCHES]	TOLERANCES UNLESS OTHERWISE SPECIFIED:	DWG: G. ATTADIA - 11-26-04	CHK: C. ROHDE - 11-26-04	APVD: M. WALMSLEY - 11-26-04	NAME: AMPMODU SYSTEM 50, CONNECTOR, PADDLEBOARD
0 PLC ± -	1 PLC ± -	2 PLC ± -	3 PLC ± .13 [003]	4 PLC ± -	ANGLES ± -
MATERIAL: △△	FINISH: △	SIZE: A1	WEIGHT: -	CAGE CODE: 00779	DRAWING NO: 5111595
CUSTOMER DRAWING			SCALE: 10:1	SHEET: 1 OF 2	REV: D

THIS DRAWING IS A CONTROLLED DOCUMENT. Tyco Electronics Corporation Harrisburg, PA 17105-3608

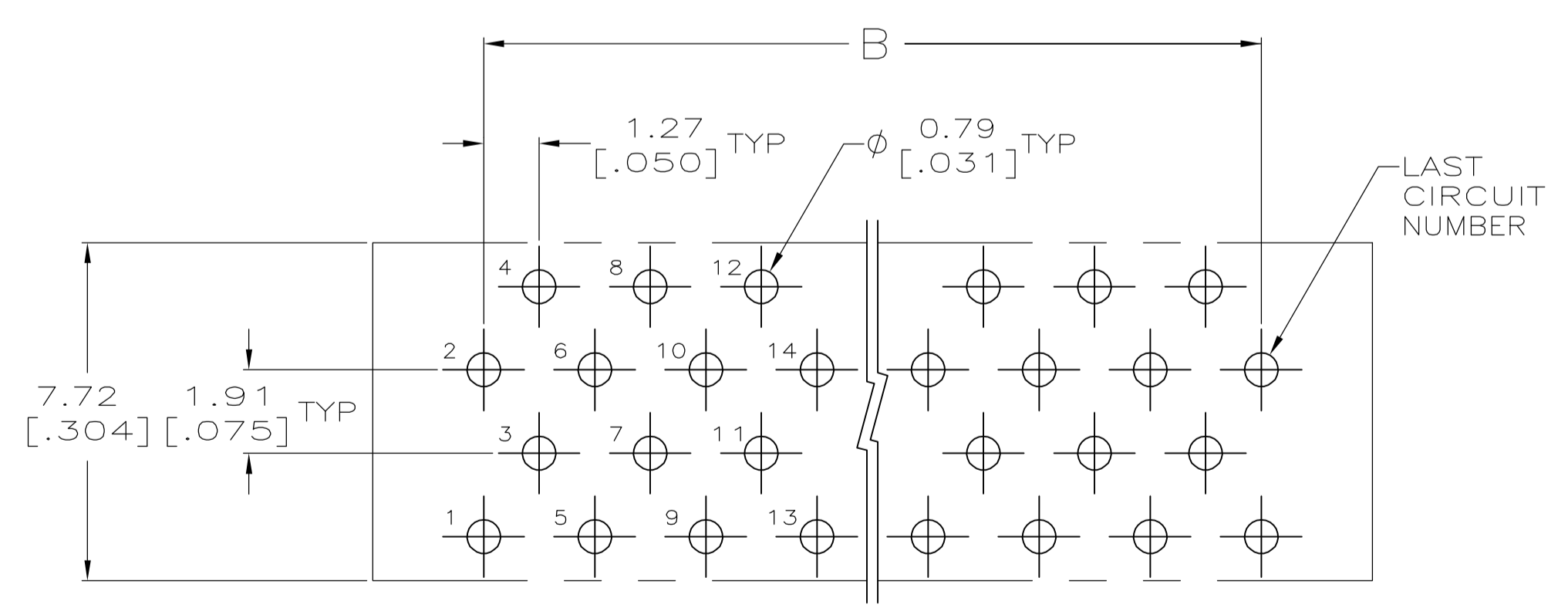
LOC		DIST		REVISIONS			
P	LTR	DESCRIPTION	DATE	DNW	APVD		
		SEE SHEET 1					



VIEW A-A
(COVER REMOVED FOR CLARITY)



PRINTED CIRCUIT BOARD HOLE LAYOUT #2



PRINTED CIRCUIT BOARD HOLE LAYOUT #1

THIS DRAWING IS A CONTROLLED DOCUMENT.		DWG G. ATTADIA	26NOV04	Tyco Electronics Corporation Harrisburg, PA 17105-3608
DIMENSIONS: mm [INCHES]		CHK C. ROHDE	26NOV04	
TOLERANCES UNLESS OTHERWISE SPECIFIED:		APP'D M. WALMSLEY	26NOV04	NAME AMP/Modu SYSTEM 50, CONNECTOR, PADDLEBOARD
0 PLG ± - 1 PLG ± - 2 PLG ± - 3 PLG ± - 4 PLG ± - ANGLES ± ± -		APPLICATION SPEC		RESTRICTED TO
MATERIAL SEE SHEET 1	FINISH SEE SHEET 1	WEIGHT	SIZE A1	CAGE CODE 00779
CUSTOMER DRAWING		DRAWING NO 5111595	SCALE 10:1	SHEET 2 OF 2