

Housing - HC-B 16-SFQD-67/O2PG21 - 1673685

Please be informed that the data shown in this PDF Document is generated from our Online Catalog. Please find the complete data in the user's documentation. Our General Terms of Use for Downloads are valid (<http://phoenixcontact.com/download>)



HEAVYCON box mounting base, for double locking latch, height: 67 mm, with glands, 2 x Pg21

Key Commercial Data

Packing unit	10 pc
GTIN	 4 017918 152598
Weight per Piece (excluding packing)	367.86 g
Custom tariff number	85389099
Country of origin	Germany
Note	Made to Order (non-returnable)

Technical data

Dimensions

Height	67 mm
Width	57 mm
Length	117 mm

Ambient conditions

Degree of protection of housing (IP)	IP65 (When plugged in)
Ambient temperature (operation)	-40 °C ... 125 °C

General

Note	For contact inserts HC-B16, BB32, BBB40, D40, DD72, HS6, M, K
Type	B16
Housing type	Box mounting bases
Locking type	For double locking latch
No. of cable outlets	2
Cable exit	Lateral
Screw connection	none
Type of the screw connection	2x Pg21
Protective cover	Yes
Housing material	Aluminum die-cast

Housing - HC-B 16-SFQD-67/O2PG21 - 1673685

Technical data

General

Housing surface material	Powder-coated, gray
Seal material	NBR
Material lock	Stainless steel, handle: PA
Material grip body interlock	PA
Material, protective cover	Polyamide
Assembly instructions	For half and full screw connections

Classifications

eCl@ss

eCl@ss 4.0	27140816
eCl@ss 4.1	27140816
eCl@ss 5.0	27143424
eCl@ss 5.1	27143424
eCl@ss 6.0	27143424
eCl@ss 7.0	27440209
eCl@ss 8.0	27440202

ETIM

ETIM 2.0	EC000437
ETIM 3.0	EC000437
ETIM 4.0	EC002498
ETIM 5.0	EC000437

UNSPSC

UNSPSC 6.01	30211817
UNSPSC 7.0901	39121416
UNSPSC 11	43172601
UNSPSC 12.01	39121522
UNSPSC 13.2	39121522

Approvals

Approvals

Approvals

EAC

Ex Approvals

Housing - HC-B 16-SFQD-67/O2PG21 - 1673685

Approvals

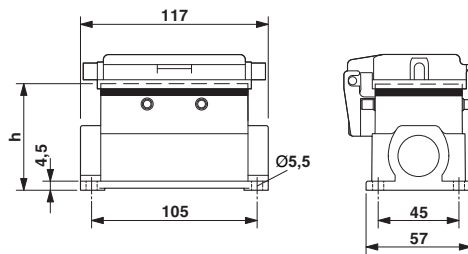
Approvals submitted

Approval details

EAC

Drawings

Dimensional drawing



Dimensional drawing