

# FDMS037N08B

## N 沟道 PowerTrench® MOSFET 75 V, 100 A, 3.7 mΩ

### 特性

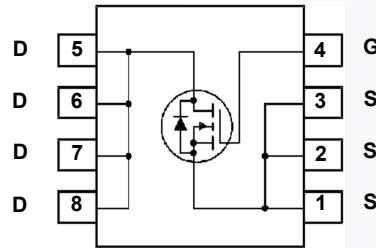
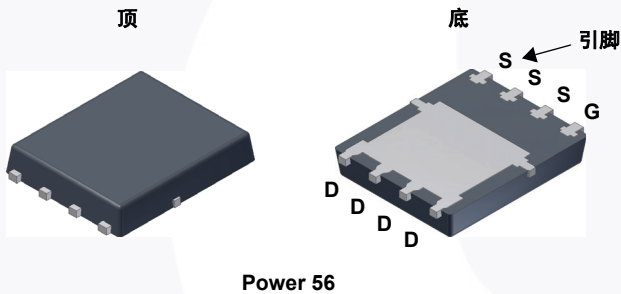
- $R_{DS(on)} = 3.01 \text{ m}\Omega$  (典型值) @  $V_{GS} = 10 \text{ V}$ ,  $I_D = 50 \text{ A}$
- 低 FOM  $R_{DS(on)} \cdot Q_G$
- 低反向恢复电荷,  $Q_{rr} = 80 \text{ nC}$
- 软反向恢复体二极管
- 可实现高效同步整流
- 快速开关速度
- 100% 经过 UIL 测试
- 符合 RoHS 标准

### 说明

此 N 沟道 MOSFET 采用飞兆半导体先进的 Power Trench® 工艺生产, 这一先进工艺是专为最大限度地降低通态电阻并保持卓越开关性能而定制的。

### 应用

- 用于 ATX/ 服务器 / 电信 PSU 的同步整流
- 电池保护电路
- DC 电机驱动和不间断电源



### MOSFET 最大额定值 $T_A = 25^\circ\text{C}$ 除非另有说明。

符号	参数	FDMS037N08B	单位
$V_{DSS}$	漏极-源极电压	75	V
$V_{GSS}$	栅极-源极电压	$\pm 20$	V
$I_D$	漏极电流	- 连续 ( $T_C = 25^\circ\text{C}$ )	100
		- 连续 ( $T_C = 25^\circ\text{C}$ , 硅限制)	128
		- 连续 ( $T_A = 25^\circ\text{C}$ ) (说明 1a)	19.9
$I_{DM}$	漏极电流	- 脉冲 (说明 2)	400
$E_{AS}$	单脉冲雪崩能量	(说明 3)	180.6
$P_D$	功耗	( $T_C = 25^\circ\text{C}$ )	104.2
		( $T_A = 25^\circ\text{C}$ ) (说明 1a)	0.83
$T_J, T_{STG}$	工作和存储温度范围	-55 至 +150	$^\circ\text{C}$

### 热性能

符号	参数	FDMS037N08B	单位
$R_{\theta JC}$	结至外壳热阻最大值	1.2	$^\circ\text{C}/\text{W}$
$R_{\theta JA}$	结至环境热阻最大值 (说明 1a)	50	

## 封装标识与订购信息

器件标识	器件	封装	卷尺寸	带宽	数量
FDMS037N08B	FDMS037N08B	Power 56	13"	12 mm	3000 个

电气特性  $T_J = 25^\circ\text{C}$  除非另有说明。

符号	参数	测试条件	最小值	典型值	最大值	单位
----	----	------	-----	-----	-----	----

## 关断特性

$BV_{DSS}$	漏极-源极击穿电压	$I_D = 250 \mu\text{A}, V_{GS} = 0 \text{ V}$	75	-	-	V
$\Delta BV_{DSS} / \Delta T_J$	击穿电压温度系数	$I_D = 250 \mu\text{A}$ , 推荐选用 $25^\circ\text{C}$	-	39	-	$\text{mV}/^\circ\text{C}$
$I_{DSS}$	零栅极电压漏极电流	$V_{DS} = 60 \text{ V}, V_{GS} = 0 \text{ V}$	-	-	1	$\mu\text{A}$
$I_{GSS}$	栅极-体漏电流	$V_{GS} = \pm 20 \text{ V}, V_{DS} = 0 \text{ V}$	-	-	$\pm 100$	nA

## 导通特性

$V_{GS(th)}$	栅极阈值电压	$V_{GS} = V_{DS}, I_D = 250 \mu\text{A}$	2.5	-	4.5	V
$R_{DS(on)}$	漏极至源极静态导通电阻	$V_{GS} = 10 \text{ V}, I_D = 50 \text{ A}$	-	3.01	3.7	$\text{m}\Omega$
$g_{FS}$	正向跨导	$V_{DS} = 10 \text{ V}, I_D = 50 \text{ A}$	-	108	-	S

## 动态特性

$C_{iss}$	输入电容	$V_{DS} = 37.5 \text{ V}, V_{GS} = 0 \text{ V}$ $f = 1 \text{ MHz}$	-	4550	5915	pF
$C_{oss}$	输出电容		-	1060	1380	pF
$C_{rss}$	反向传输电容		-	30.2	45	pF
$C_{oss(er)}$	能量相关输出电容	$V_{DS} = 37.5 \text{ V}, V_{GS} = 0 \text{ V}$	-	1702	-	pF
$Q_{g(tot)}$	10 V 的栅极电荷总量	$V_{DS} = 37.5 \text{ V}, I_D = 50 \text{ A}$ $V_{GS} = 0 \text{ V}$ 至 $10 \text{ V}$	-	76.8	100	nC
$Q_{gs}$	栅极-源极栅极电荷		-	27.5	-	nC
$Q_{gd}$	栅极-漏极“米勒”电荷		-	17.4	-	nC
$V_{plateau}$	栅极平台电压		(说明 4)	-	5.1	-
$Q_{sync}$	总栅极电荷同步	$V_{DS} = 0 \text{ V}, I_D = 50 \text{ A}$	-	66.3	-	nC
$Q_{oss}$	输出电荷	$V_{DS} = 37.5 \text{ V}, V_{GS} = 0 \text{ V}$	-	74.6	-	nC
ESR	等效串联电阻	$f = 1 \text{ MHz}$	-	1.28	-	$\Omega$

## 开关特性

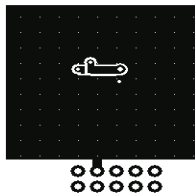
$t_{d(on)}$	导通延迟时间	$V_{DD} = 37.5 \text{ V}, I_D = 50 \text{ A}$ $V_{GS} = 10 \text{ V}, R_G = 4.7 \Omega$	-	34.9	80	ns
$t_r$	开通上升时间		-	20.1	50	ns
$t_{d(off)}$	关断延迟时间		-	55.3	120	ns
$t_f$	关断下降时间		(说明 4)	-	19.4	49

## 漏极-源极二极管特性

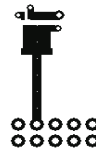
$I_S$	漏极-源极二极管最大正向连续电流	-	-	100	A	
$I_{SM}$	漏极-源极二极管最大正向脉冲电流	-	-	400	A	
$V_{SD}$	漏极-源极二极管正向电压	$V_{GS} = 0 \text{ V}, I_{SD} = 50 \text{ A}$	-	-	1.3	V
$t_{rr}$	反向恢复时间	$V_{GS} = 0 \text{ V}, I_{SD} = 50 \text{ A}$	-	66.8	-	ns
$Q_{rr}$	反向恢复电荷	$di_F/dt = 100 \text{ A}/\mu\text{s}$	-	84	-	nC

## 注意:

1.  $R_{\theta JA}$  取决于安装在 FR-4 材质 1.5 x 1.5 in. 电路板上 1 in<sup>2</sup> 2 盎司铜焊盘上的器件。  $R_{\theta JC}$  通过设计保证，而  $R_{\theta CA}$  取决于用户的电路板设计。



a.  $50^\circ\text{C}/\text{W}$ , 安装于  
1 in<sup>2</sup> 2 盎司铜焊盘。



b.  $125^\circ\text{C}/\text{W}$ , 安装于  
最小尺寸的 2 盎司铜焊盘。

- 重复额定值: 脉冲宽度受限于最大结温。
- $L = 0.3 \text{ mH}$ ,  $I_{AS} = 34.7 \text{ A}$ , 开始  $T_J = 25^\circ\text{C}$ 。
- 本质上独立于工作温度的典型特性。

## 典型性能特征

图 1. 导通区域特性

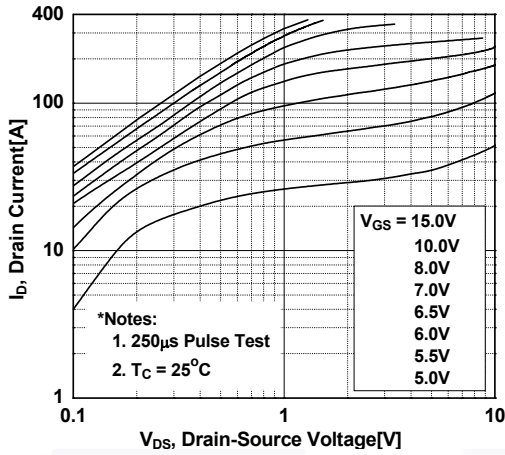


图 2. 传输特性

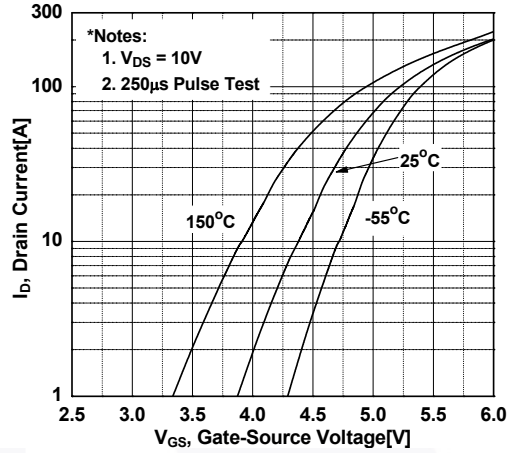


图 3. 导通电阻变化与漏极电流和栅极电压

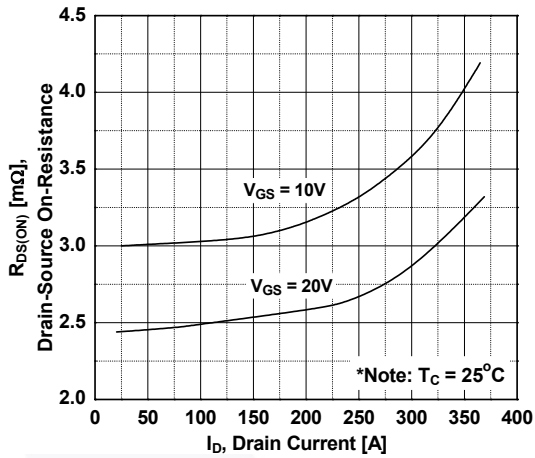


图 4. 体二极管正向电压变化与源极电流和温度

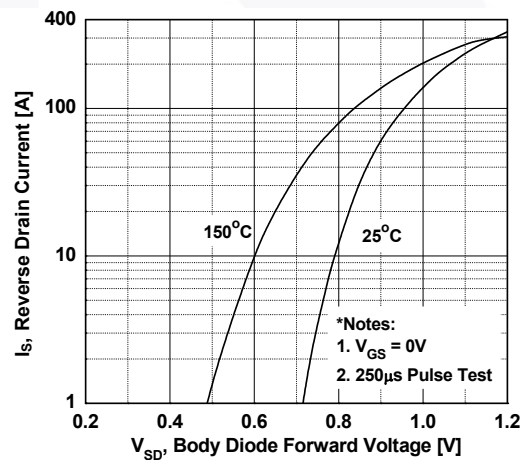


图 5. 电容特性

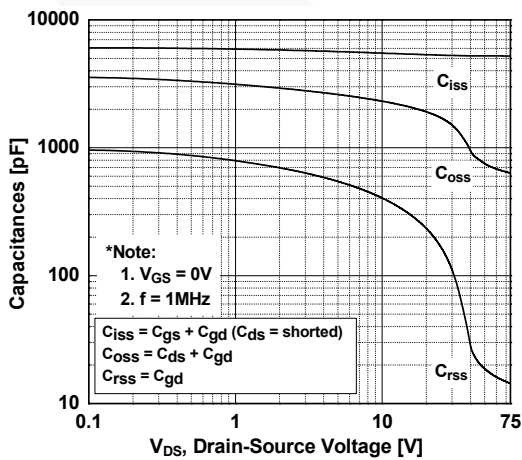
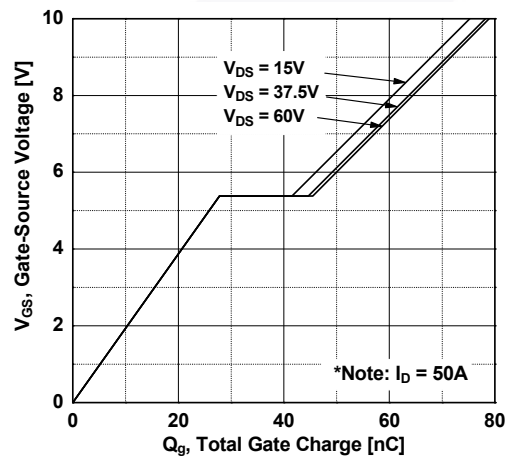


图 6. 栅极电荷



典型性能特征 (接上页)

图 7. 击穿电压变化与温度

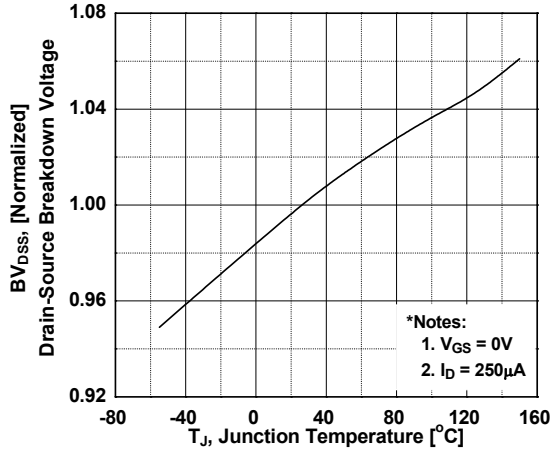


图 8. 导通电阻变化与温度

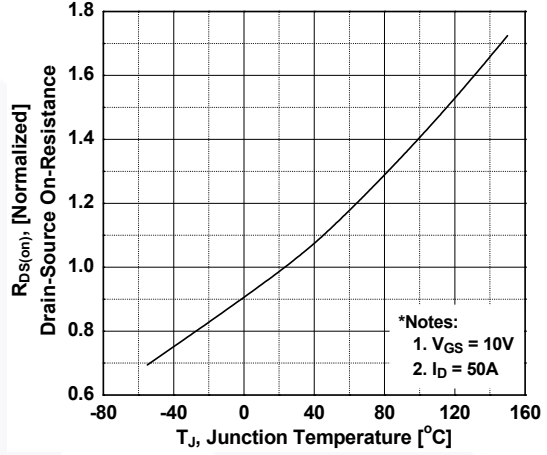


图 9. 最大安全工作区

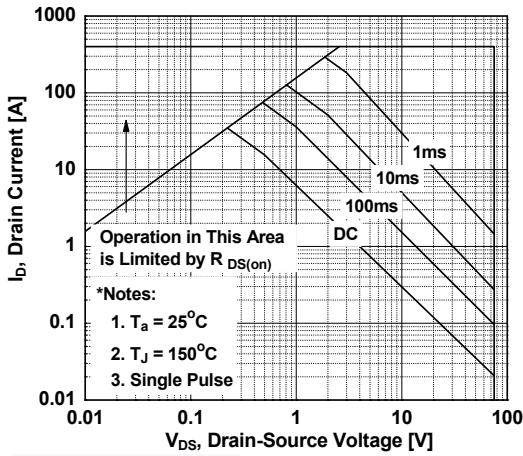


图 10. 最大漏极电流与外壳温度

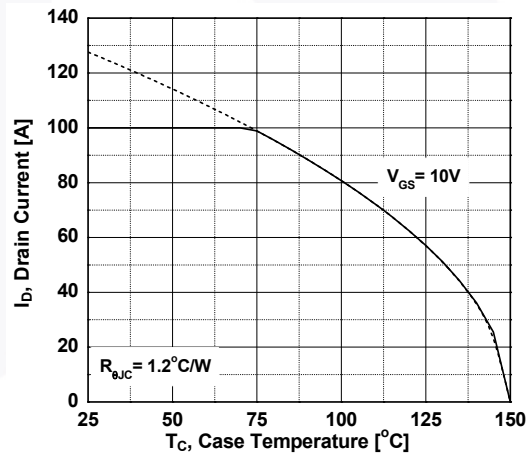


图 11. 输出电容 (Eoss) 与漏极-源极电压

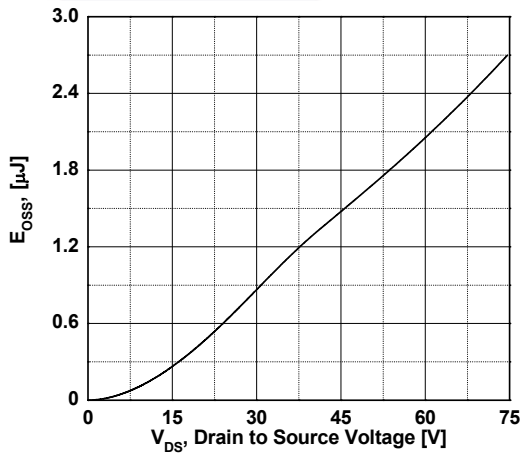
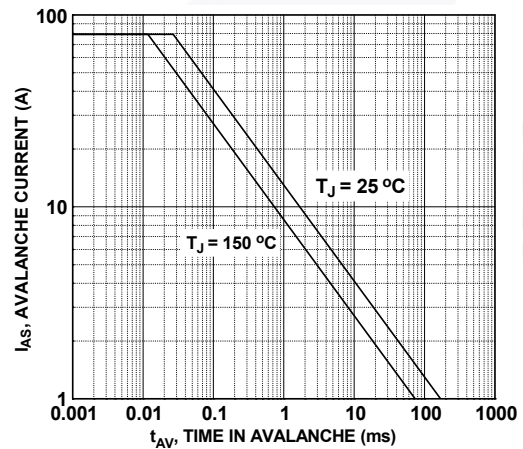


图 12. 非箝位电感开关能力



典型性能特征 (接上页)

图 13. 瞬态热响应曲线

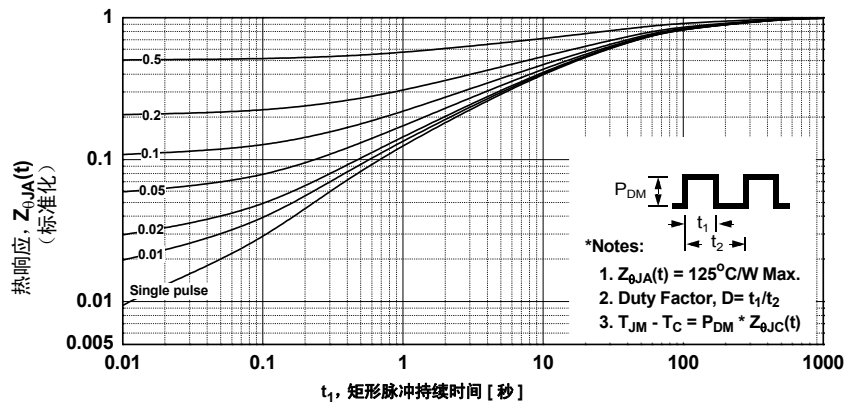


图 14. 栅极电荷测试电路与波形

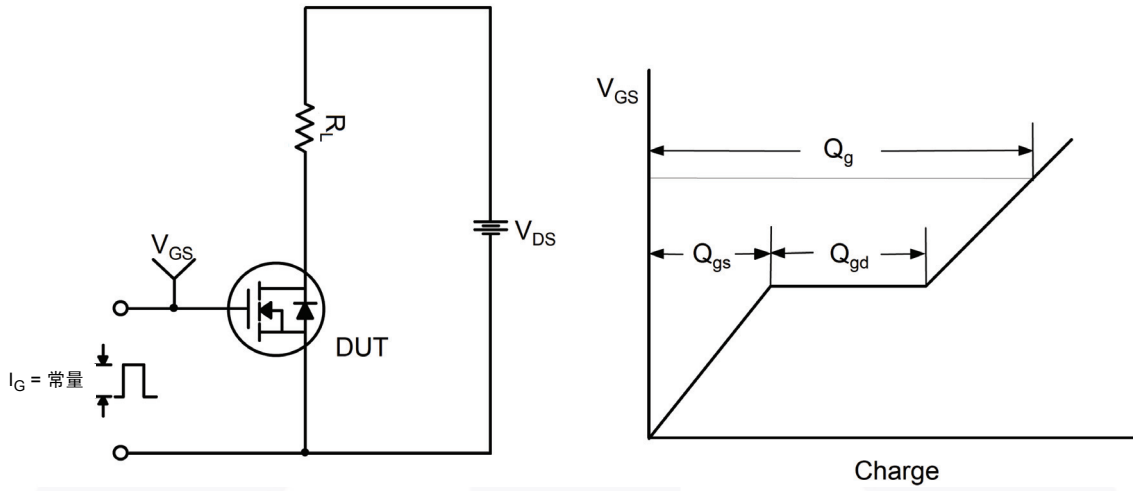


图 15. 阻性开关测试电路与波形

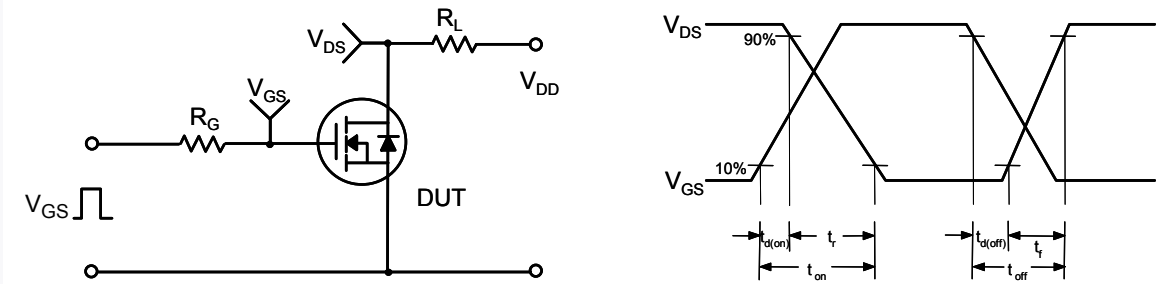


图 16. 非箝位电感开关测试电路与波形

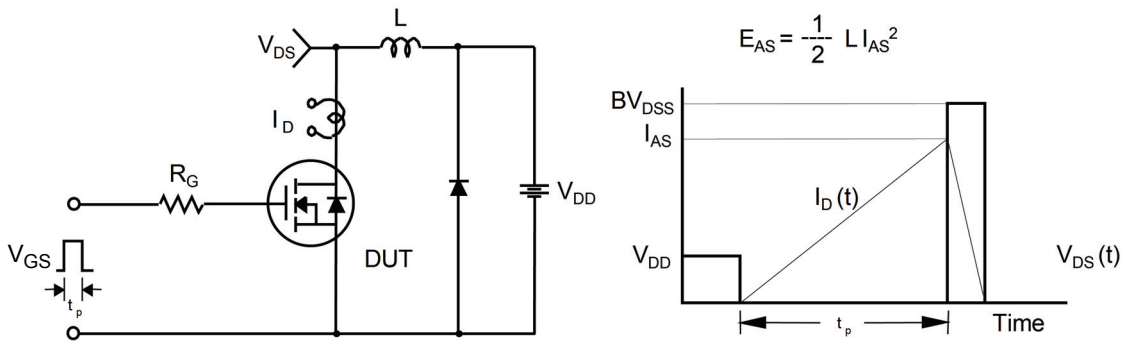


图 17. 二极管恢复 dv/dt 峰值测试电路与波形

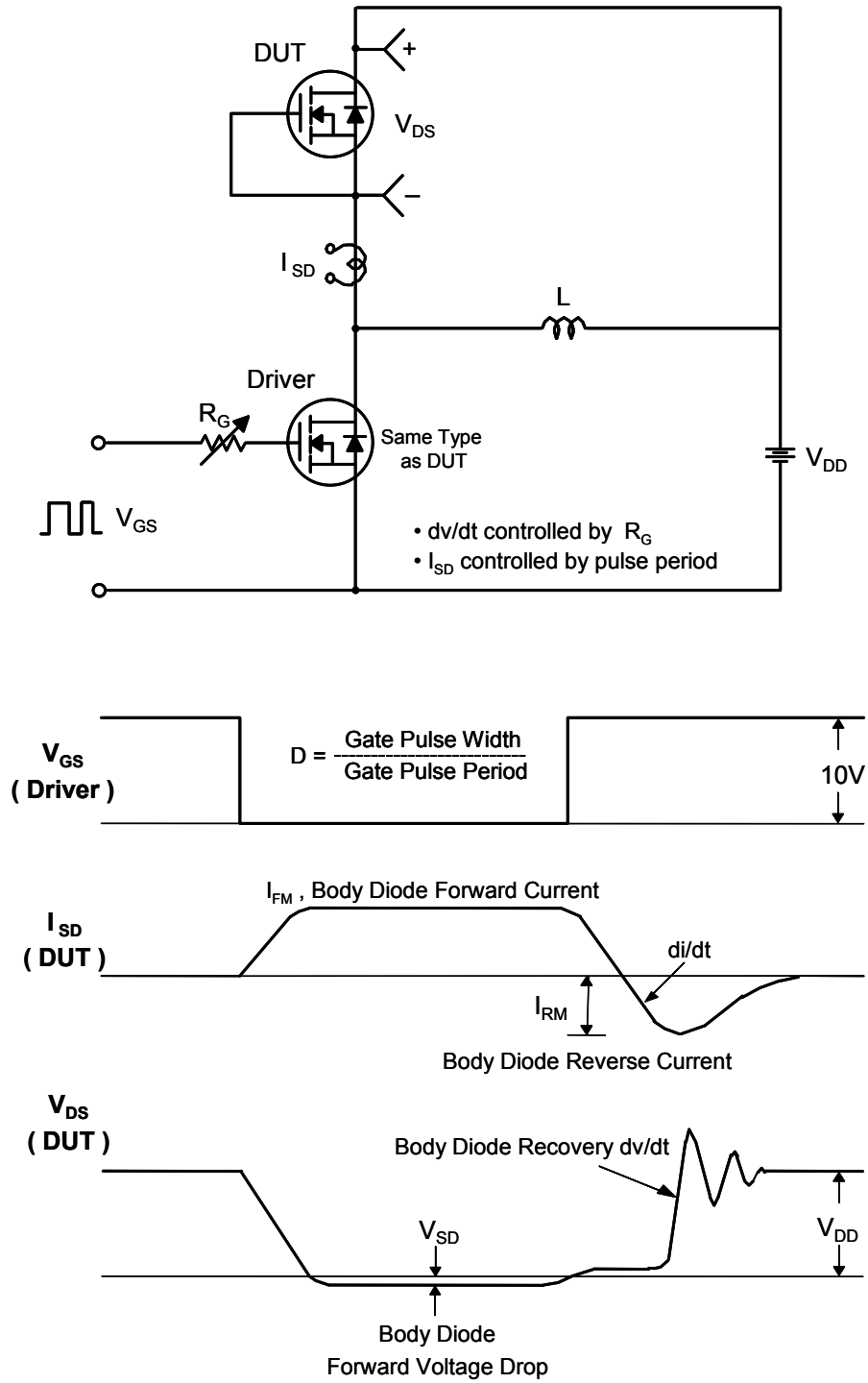
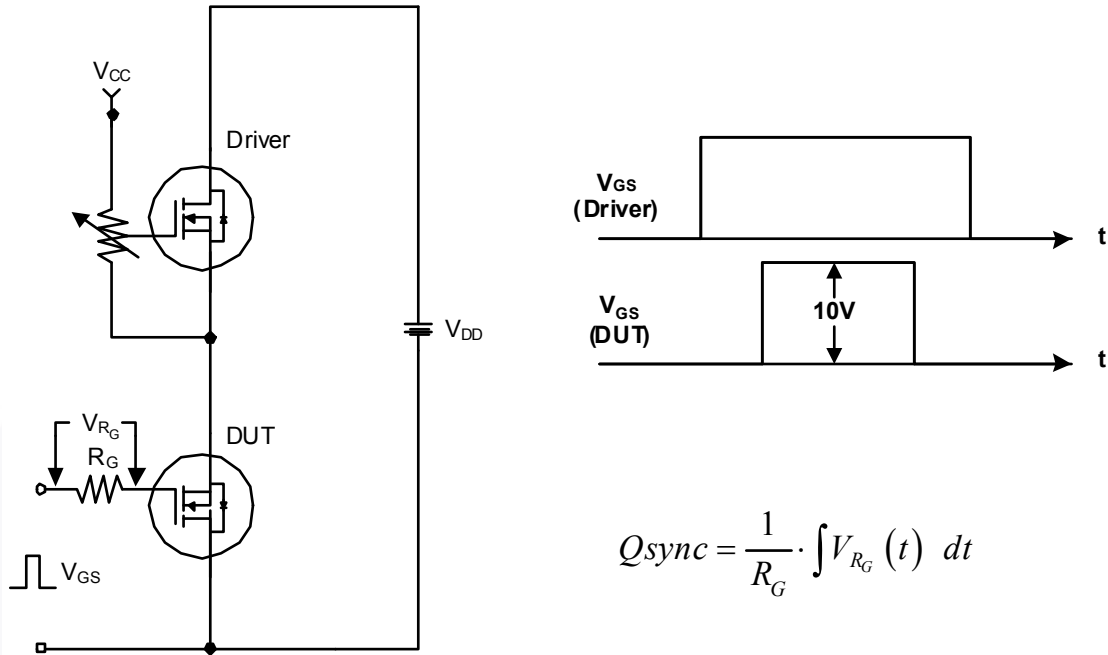


图 18. 总栅极电荷  $Q_{sync}$  测试电路与波形



## 机械尺寸

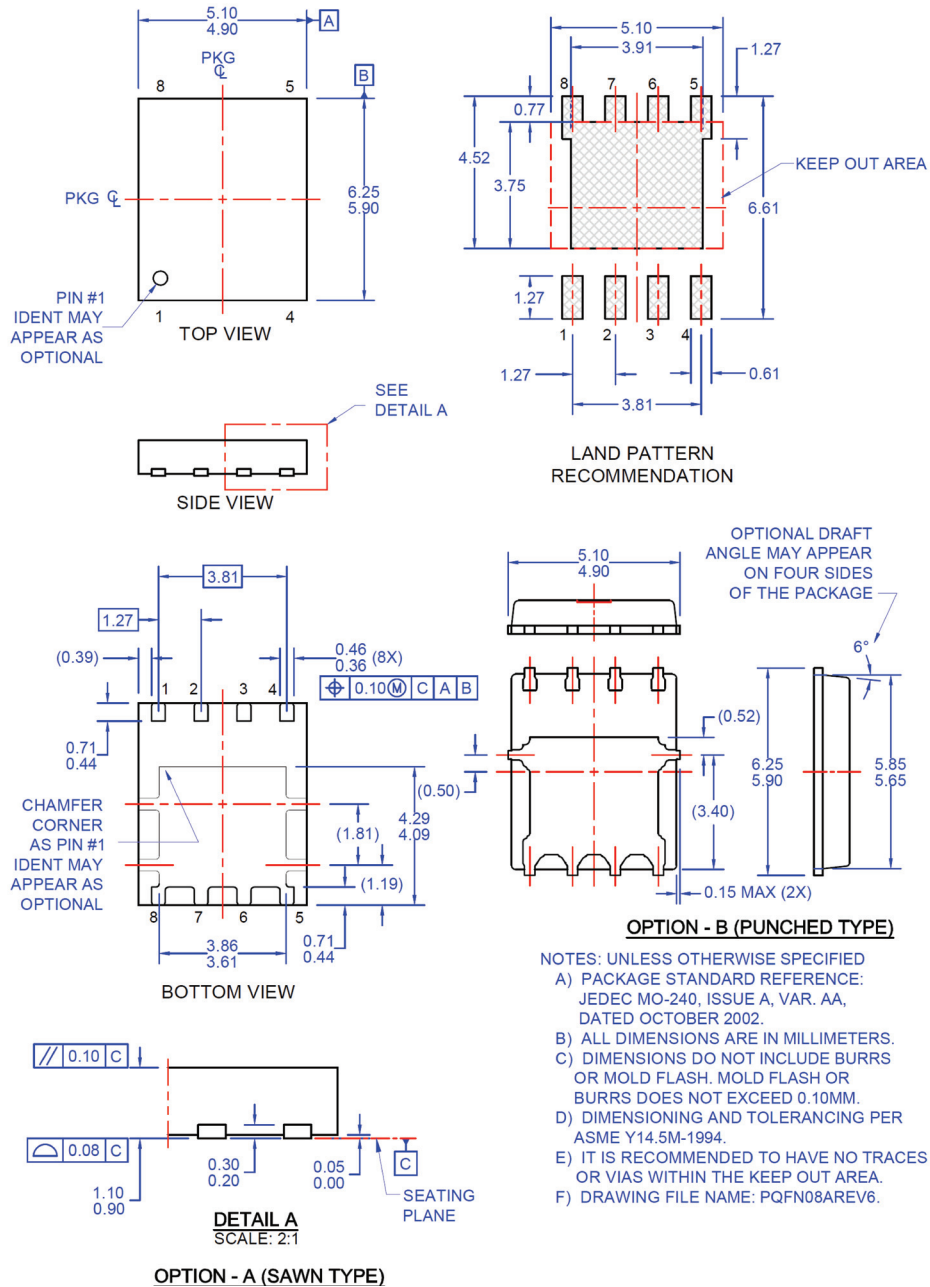


图 19. 8LD, PQFN, JEDEC MO-240 AA, 5.0X6.0MM

封装图纸作为一项服务，提供给考虑飞兆半导体元件的客户。具体参数可能会有变化，且不会做出相应通知。请注意图纸上的版本和 / 或日期，并联系飞兆半导体代表核实或获得最新版本。封装规格并不超出飞兆公司全球范围内的条款与条件，尤其指保修，保修涵盖飞兆半导体的全部产品。




随时访问飞兆半导体在线封装网页，可以获取最新的封装图纸：

[http://www.fairchildsemi.com/package/packageDetails.html?id=PN\\_PQOAM-008](http://www.fairchildsemi.com/package/packageDetails.html?id=PN_PQOAM-008)



**TRADEMARKS**

The following includes registered and unregistered trademarks and service marks, owned by Fairchild Semiconductor and/or its global subsidiaries, and is not intended to be an exhaustive list of all such trademarks.

- |  |   |   |   |
|--|---|---|---|
| AccuPower™   | F-PFS™  | PowerTrench®  | Sync-Lock™  |
| AX-CAP®*   | FRFET®  | PowerXS™  | <b>SYSTEM GENERAL</b> ®*  |
| BitSiC™  | Global Power Resource <sup>SM</sup>             | Programmable Active Droop™  | TinyBoost®  |
| Build it Now™  | GreenBridge™                                    | QFET®   | TinyBuck®   |
| CorePLUS™  | Green FPS™                                      | QS™   | TinyCalc™   |
| CorePOWER™   | Green FPS™ e-Series™                            | Quiet Series™   | TinyLogic®  |
| CROSSVOLT™   | Gmax™   | RapidConfigure™   | TINYOPTO™   |
| CTL™   | GTO™  |   | TinyPower™  |
| Current Transfer Logic™  | IntelliMAX™                                     |  Saving our world, 1mW/W/kW at a time™ | TinyPWM™  |
| DEUXPEED®  | ISOPLANAR™                                      | SignalWise™   | TinyWire™   |
| Dual Cool™   | Marking Small Speakers Sound Louder and Better™ | SmartMax™   | TranSiC™  |
| EcoSPARK®  | MegaBuck™                                       | SMART START™  | TriFault Detect™  |
| EfficientMax™  | MICROCOUPLER™                                   | Solutions for Your Success™   | TRUECURRENT®*   |
| ESBC™  | MicroFET™                                       | SPM®  | µSerDes™  |
|  Fairchild® | MicroPak™                                       | STEALTH™  |  SerDes® |
| Fairchild Semiconductor®   | MicroPak2™                                      | SuperFET®   | UHC®  |
| FACT Quiet Series™   | MillerDrive™                                    | SuperSOT™-3   | Ultra FRFET™  |
| FACT®  | MotionMax™                                      | SuperSOT™-6   | UniFET™   |
| FAST®  | mWSaver®  | SuperSOT™-8   | VCX™  |
| FastvCore™   | OptoHiT™  | SupreMOS®   | VisualMax™  |
| FETBench™  | OPTOLOGIC®                                      | SyncFET™  | VoltagePlus™  |
| FPS™   | OPTOPLANAR®                                     |   | XS™   |

\*Trademarks of System General Corporation, used under license by Fairchild Semiconductor.

**DISCLAIMER**

FAIRCHILD SEMICONDUCTOR RESERVES THE RIGHT TO MAKE CHANGES WITHOUT FURTHER NOTICE TO ANY PRODUCTS HEREIN TO IMPROVE RELIABILITY, FUNCTION, OR DESIGN. FAIRCHILD DOES NOT ASSUME ANY LIABILITY ARISING OUT OF THE APPLICATION OR USE OF ANY PRODUCT OR CIRCUIT DESCRIBED HEREIN; NEITHER DOES IT CONVEY ANY LICENSE UNDER ITS PATENT RIGHTS, NOR THE RIGHTS OF OTHERS. THESE SPECIFICATIONS DO NOT EXPAND THE TERMS OF FAIRCHILD'S WORLDWIDE TERMS AND CONDITIONS, SPECIFICALLY THE WARRANTY THEREIN, WHICH COVERS THESE PRODUCTS.

**LIFE SUPPORT POLICY**

FAIRCHILD'S PRODUCTS ARE NOT AUTHORIZED FOR USE AS CRITICAL COMPONENTS IN LIFE SUPPORT DEVICES OR SYSTEMS WITHOUT THE EXPRESS WRITTEN APPROVAL OF FAIRCHILD SEMICONDUCTOR CORPORATION.

As used here in:

- Life support devices or systems are devices or systems which, (a) are intended for surgical implant into the body or (b) support or sustain life, and (c) whose failure to perform when properly used in accordance with instructions for use provided in the labeling, can be reasonably expected to result in a significant injury of the user.
- A critical component in any component of a life support, device, or system whose failure to perform can be reasonably expected to cause the failure of the life support device or system, or to affect its safety or effectiveness.

**ANTI-COUNTERFEITING POLICY**

Fairchild Semiconductor Corporation's Anti-Counterfeiting Policy. Fairchild's Anti-Counterfeiting Policy is also stated on our external website, www.Fairchildsemi.com, under Sales Support. Counterfeiting of semiconductor parts is a growing problem in the industry. All manufactures of semiconductor products are experiencing counterfeiting of their parts. Customers who inadvertently purchase counterfeit parts experience many problems such as loss of brand reputation, substandard performance, failed application, and increased cost of production and manufacturing delays. Fairchild is taking strong measures to protect ourselves and our customers from the proliferation of counterfeit parts. Fairchild strongly encourages customers to purchase Fairchild parts either directly from Fairchild or from Authorized Fairchild Distributors who are listed by country on our web page cited above. Products customers buy either from Fairchild directly or from Authorized Fairchild Distributors are genuine parts, have full traceability, meet Fairchild's quality standards for handling and storage and provide access to Fairchild's full range of up-to-date technical and product information. Fairchild and our Authorized Distributors will stand behind all warranties and will appropriately address and warranty issues that may arise. Fairchild will not provide any warranty coverage or other assistance for parts bought from Unauthorized Sources. Fairchild is committed to combat this global problem and encourage our customers to do their part in stopping this practice by buying direct or from authorized distributors.

**PRODUCT STATUS DEFINITIONS**

**Definition of Terms**

Datasheet Identification	Product Status	Definition
Advance Information	Formative / In Design	Datasheet contains the design specifications for product development. Specifications may change in any manner without notice.
Preliminary	First Production	Datasheet contains preliminary data; supplementary data will be published at a later date. Fairchild Semiconductor reserves the right to make changes at any time without notice to improve design.
No Identification Needed	Full Production	Datasheet contains final specifications. Fairchild Semiconductor reserves the right to make changes at any time without notice to improve the design.
Obsolete	Not In Production	Datasheet contains specifications on a product that is discontinued by Fairchild Semiconductor. The datasheet is for reference information only.

Rev. I66