

## LED Work Light INSTALLATION MANUAL

[ TYPE : CLM-24 ]

Thank you for specifying the PATLITE LED Work Light for your application. Please read these instructions carefully before you perform installation, maintenance and repair. Store this manual carefully for easy reference. If you have any questions about this product, please contact PATLITE Corporation.

### NOTES TO BE OBSERVED FOR SAFE OPERATION

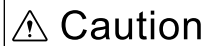
In order to prevent any damage to the user and other personnel or to assets, note the following:

■ The indications for warning are divided into the following classes according to the degree of danger or damage incurred when the warning is not taken into consideration and the product is not correctly used.



**Warning**

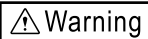
Indicates an imminently dangerous condition: failure to follow the instructions may lead to death or serious injury.



**Caution**

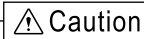
Indicates a potentially dangerous condition: failure to follow the instructions may lead to slight injury or property damage.

### 1. To operate this product safely, please observe the following



**Warning**

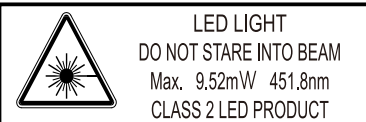
- Make sure the power is off before wiring, repairing, or replacing parts to avoid a short-circuit, electric shock, or burn.
- If installing this product requires construction work, please ask a specialist in order to avoid electric shock, fire, or personal injury.
- Do not use this product with the GLASS damaged in order to avoid an electric shock.
- When this product is used for security purposes, it should be inspected daily. In case a malfunction should occur, it is recommended that you use this product together with other security products.
- Do not use this product to support your weight while climbing onto a machine. Mount the product so that it is clear of any moving parts - such as a machine cover.
- Do not stare into the beam, look directly to the optical instrument nor turn the light to surrounding people as it may cause visual impairment.
- Do not install within 10 ft of a pool.



**Caution**

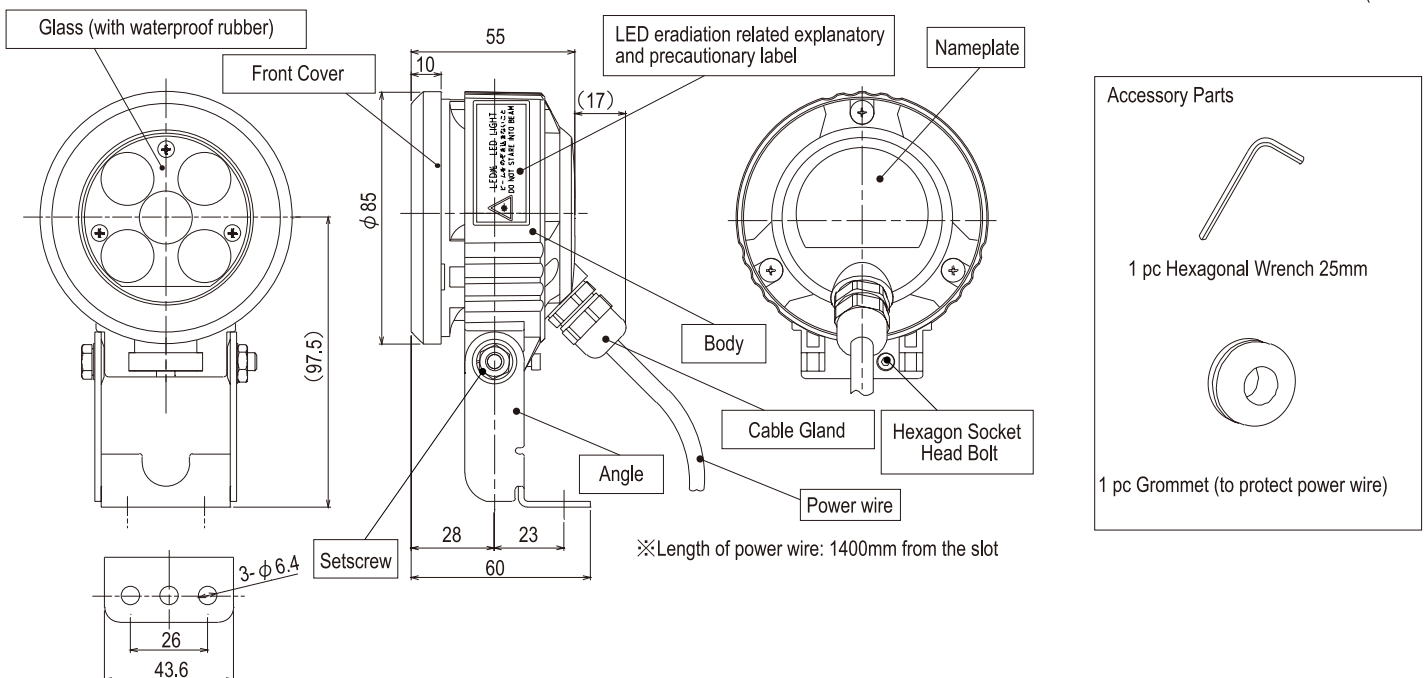
- Ensure to use ONLY specified operating voltage range.
- Do not loosen any screws and/or cable gland, as it may ruin the waterproof function.
- A Body should be removed, when carrying out the various examinations ( voltage-proof examination etc.) of the whole equipment currently installed, since the case is grounded.

※Classification according to IEC 60825-1:2001 (JIS C 6802:2005).



### 2. Parts name and Dimensions

(unit : mm)



### 3. Installation

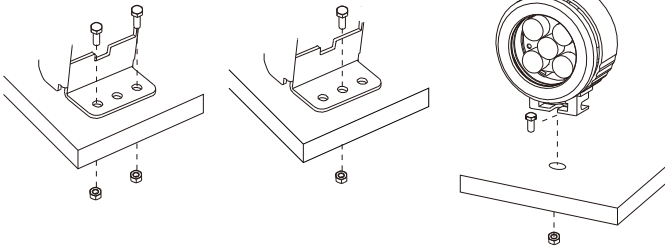
#### Warning

- Make sure the power is off before wiring, repairing, or replacing parts to avoid a short-circuit, electric shock, or burn.
- Do not install on high and/or unstable location, as it may cause the product to fall.
- Do not install within 10 ft of a pool.

#### Installation Process

- Use M6 bolts and nuts to securely install on the mounting side (flat surface).
- For body's direct mount, remove the setscrews to dismount the angle.

- ① 2 point angle-mount    ② 1 point angle-mount    ③ Direct Mount

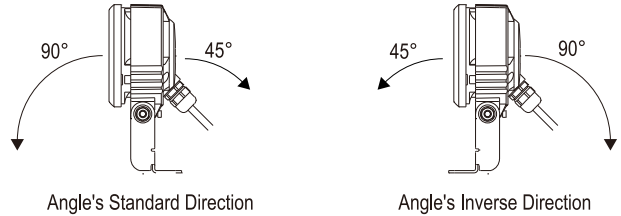


?Prepare required mounting bolts and nuts, for they are not provided.

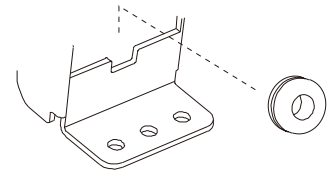
#### Caution

- Do not pull nor shove the power wire, as it may cause damage. Let the wire loose when and after wiring.

- The body's angle can be adjusted by loosening the setscrews and its limit can be set by changing the angle's mounting direction. Once the angle is determined, tighten the setscrews. (recommended setscrew tightening torque: 2.40 N·m)



- Once the angle is set, use the hexagonal wrench to securely clamp the hexagon socket head bolt.
- To wire the power wire between the body and angle, place the grommet on the angle to avoid cable damage.



### 4. Wiring Procedure

#### Warning

- Make sure the power is off before wiring, repairing, or replacing parts to avoid a short-circuit, electric shock, or burn.

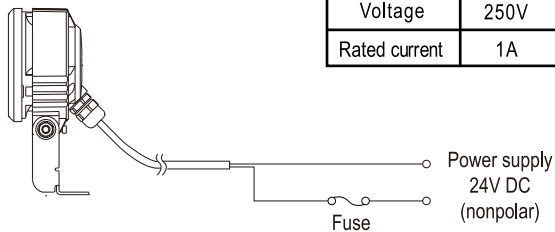
#### Caution

- Ensure to use ONLY specified operating voltage range.
- Do not pull nor shove the power wire, as it may cause damage. Let the wire loose when and after wiring.
- This product is designed so that the unit itself is electrically grounded. Please do not allow the positive terminal to touch metal. This could cause an electrical short and burn out the internal circuits.

#### Wiring Example

#### 【Fuse (Recommendation)】

Voltage	250V
Rated current	1A



- ※ Ensure to use "class-II circuit" or UL1950 certified power source (low or under 100VA power source) for connecting to the power supply.
- ※ Ensure to use specified rated fuse required for the device which will be installed to. (Recommendation : UL class J-type)
- ※ The rush current of 7A·0.1ms or less will flow in a power source line. Consider the rush current and the capacity of the power source line when choosing the power source line.

### 5. Specifications

Model	CLM-24	
Rated Voltage	24V DC (nonpolar)	
Rated Voltage Consumption	3W	
Light Source	LED	Use of 5pcs super bright white LED
	Luminosity	500cd at 1m (central value)
Materials	Body	Aluminum alloy
	Front cover	Aluminum alloy
	Angle	Stainless
	Surface of Glass	Tempered glass (clear)
Mounting type	Upright, Horizontal and Sideway	
Operating temperature range	-25°C ~ +60°C (no condensation)	
Protection	IP67 compliant	
Vibration Limit	19.6 m/s <sup>2</sup>	
Mass	450g	

#### Caution

- PATLITE Corporation disclaims all liability for any malfunction or damage occurring as a result of handling contrary to the instructions, cautions and warnings mentioned in this manual.
- Specifications may change without notice due to continual product improvement.