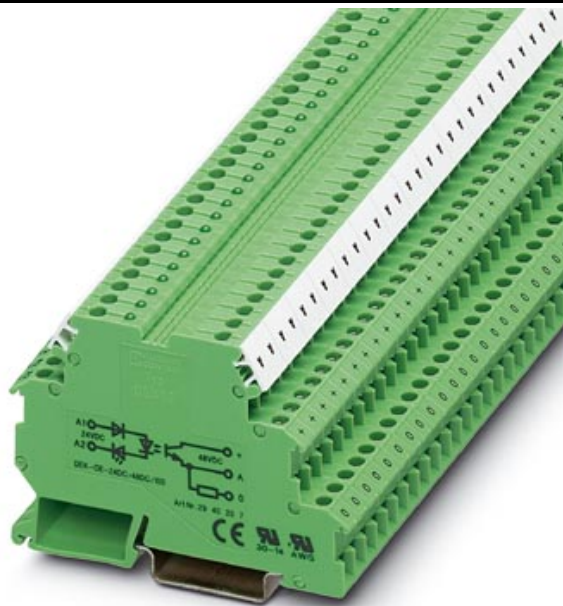


Please note that the data given here has been taken from the online catalog. For comprehensive information and data, please refer to the user documentation at <http://www.download.phoenixcontact.com>. The General Terms and Conditions of Use apply to Internet downloads.

► Extract from the online catalog



Input optocoupler terminal block, input: 120 V DC, output: 3 - 48 V DC/100 mA, terminal width 6.2 mm

The illustration shows the version DEK-OE- 24DC/48DC/100

Order No.	2941659
Ord designation	DEK-OE-120AC/48DC/100
EAN	4017918080563
Pack	10 Pcs.
Customs tariff	85364900
Catalog page information	Page 84 (IF-2005)

► Technical data

Input data

Nominal input voltage U_N	120 V AC +/- 10%
Switching threshold "0" signal in reference to U_N	0.4
Switching threshold "1" signal in reference to U_N	0.8
Typical input current at U_N	4 mA
Transmission frequency	3 Hz
Typical response time	2 ms (delay)
Typical turn-off time	2 ms (delay)

Output data

Output nominal voltage range	3 V DC ... 48 V DC
Limiting continuous current	100 mA
Leakage current	≤ 10 µA (at input "L")
Voltage drop at max. limiting continuous current	0.9 V
Protective circuitry	Polarity protection Polarity protection diode
Protective circuitry	Damping Damping diode
Output resistor	Approx. 22 kΩ (for 3-wire operation)

Connection data

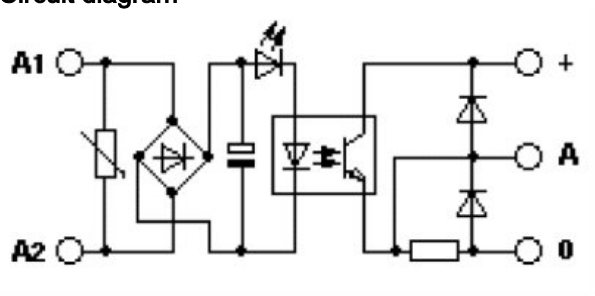
Type of connection	Screw connection
Stripping length	8 mm
Screw thread	M 3
Conductor cross section, rigid min.	0.2 mm ²
Conductor cross section, rigid max.	2.5 mm ²
Conductor cross section flexible min.	0.2 mm ²
Conductor cross section, flexible max.	2.5 mm ²
Conductor cross section AWG/kcmil min.	24
Conductor cross section AWG/kcmil max	14

General data

Length	80 mm
Width	6.2 mm
Height	56 mm
Test voltage input/output	2.5 kV AC
Ambient temperature (operation)	-20 °C ... 60 °C
Installation position	Any
Assembly instructions	In rows with zero spacing
Standards/regulations	IEC 60664
Standards/regulations	IEC 60664 A
Standards/regulations	DIN VDE 0110

► Drawings

Circuit diagram



► Accessories

Item	Designation	Description
Bridges		
2716648	EB 2- DIK BU	Insertion bridge, for middle and bottom level, 2-pos., color of the insulating material: Blue
2716693	EB 2- DIK RD	Insertion bridge, for middle and bottom level, 2-pos., color of the insulating material: Red
2716651	EB 3- DIK BU	Insertion bridge, for middle and bottom level, 3-pos., color of the insulating material: Blue
2716745	EB 3- DIK RD	Insertion bridge, for middle and bottom level, 3-pos., color of the insulating material: Red
2716664	EB 4- DIK BU	Insertion bridge, for middle and bottom level, 4-pos., color of the insulating material: Blue
2716758	EB 4- DIK RD	Insertion bridge, for middle and bottom level, 4-pos., color of the insulating material: Red
2716677	EB 5- DIK BU	Insertion bridge, for middle and bottom level, 5-pos., color of the insulating material: Blue
2716761	EB 5- DIK RD	Insertion bridge, for middle and bottom level, 5-pos., color of the insulating material: Red
2716680	EB 10- DIK BU	Insertion bridge, for middle and bottom level, 10-pos., color of the insulating material: Blue
2716774	EB 10- DIK RD	Insertion bridge, for middle and bottom level, 10-pos., color of the insulating material: Red
2715940	EB 80- DIK BU	Insertion bridge, divisible, for middle and bottom level, 80-pos., insulating material: Blue
2715953	EB 80- DIK RD	Insertion bridge, divisible, for middle and bottom level, 80-pos., insulating material: Red
2715788	EB 80- DIK WH	Insertion bridge, divisible, for middle and bottom level, 80-pos., insulating material: White

► Address

PHOENIX CONTACT GmbH & Co. KG
Flachsmarktstr. 8
32825 Blomberg
Germany
Phone +49 5235 3 00
Fax +49 5235 3 41200
<http://www.phoenixcontact.com>
Phoenix Contact
Technical modifications reserved;