

Panel mounting frames - VS-PPC-F2-MSTB-MNNA-1R-P - 1608087

Please be informed that the data shown in this PDF Document is generated from our Online Catalog. Please find the complete data in the user's documentation. Our General Terms of Use for Downloads are valid (<http://download.phoenixcontact.com>)



MSTB panel mounting frame, IP67, for push-pull interlocking, metal, for PCB connection, for square panel cutout, with grommet, without mounting screws

Key commercial data

| | |
|------------------------|---|
| Packing unit | 0 |
| Minimum order quantity | 1 |
| Catalog page | Page 362 (PC-2011) |
| GTIN |  4 046356 131759 |
| Custom tariff number | 85389099 |
| Country of origin | GERMANY |

Technical data

Mechanical characteristics

| | |
|---------------------------------|------------------|
| Locking type | Push Pull |
| Insertion/withdrawal cycles | ≥ 500 |
| Color | silver |
| Ambient temperature (operation) | -40 °C ... 80 °C |

Material data

| | |
|---|---------------|
| Inflammability class according to UL 94 | V0 |
| Housing material | Zinc die-cast |
| Housing surface material | Nickel-plated |
| Material | Metal |
| Sealing material | NBR |
| Seal material | NBR |
| Degree of protection | IP65/67 |

Electrical characteristics

| | |
|------------------|---|
| Pollution degree | 2 |
|------------------|---|

Panel mounting frames - VS-PPC-F2-MSTB-MNNA-1R-P - 1608087

Classifications

eclass

| | |
|------------|----------|
| eCl@ss 4.0 | 272607xx |
| eCl@ss 4.1 | 27260701 |
| eCl@ss 5.0 | 27260701 |
| eCl@ss 5.1 | 27260701 |
| eCl@ss 6.0 | 27260708 |

etim

| | |
|----------|----------|
| ETIM 3.0 | EC001121 |
| ETIM 4.0 | EC001121 |

unspsc

| | |
|---------------|----------|
| UNSPSC 6.01 | 31261501 |
| UNSPSC 7.0901 | 31261501 |
| UNSPSC 11 | 31261501 |
| UNSPSC 12.01 | 31261501 |
| UNSPSC 13.2 | 31261501 |

Accessories

Accessories

Female insert - VS-MSTBAH 2,5/ 5-GB-5,08-BK-A - 1657915



MSTB contact insert, for PCB assembly, 24 V, 5-pos., with angled solder pins, RAL 9005 (black), for panel mounting frame VS-PPC-F2-MSTB-...-1R-P

Female insert - VS-MSTBVA 2,5/ 5-GB-5,08-BK-A - 1609565



MSTB contact insert, for PCB assembly, 24 V, 5-pos., with straight solder pins, RAL 9005 (black), for panel mounting frame VS-PPC-F2-MSTB-...-1R-P

Female insert - VS-MSTBAH 2,5/ 5-GB-5,08-RD-B - 1609549



MSTB contact insert, for PCB assembly, 400 V, 5-pos., with angled solder pins, RAL 3000 (red), for panel mounting frame VS-PPC-F2-MSTB-...-1R-P

Panel mounting frames - VS-PPC-F2-MSTB-MNNA-1R-P - 1608087

Accessories

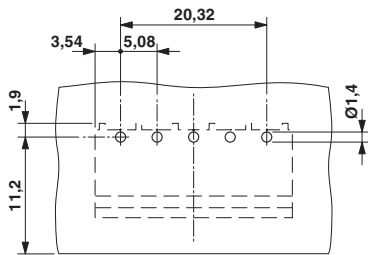
Female insert - VS-MSTBVA 2,5/ 5-GB-5,08-RD-B - 1609581



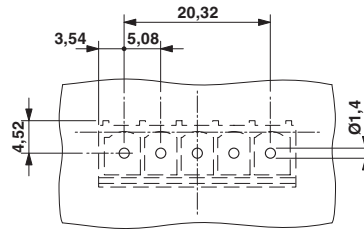
MSTB contact insert, for PCB assembly, 400 V, 5-pos., with straight solder pins, RAL 3000 (red), for panel mounting frame VS-PPC-F2-MSTB-...-1R-P

Drawings

Drilling diagram



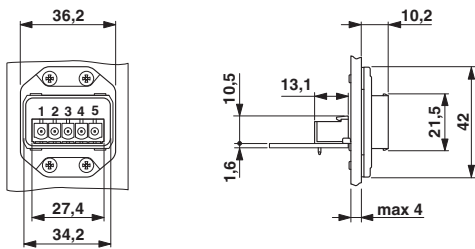
Drilling diagram



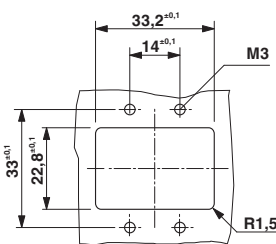
Drilling diagram

Drilling diagram

Dimensioned drawing



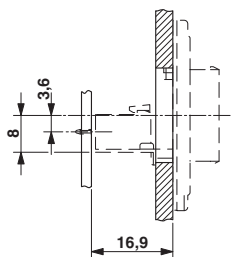
Dimensioned drawing



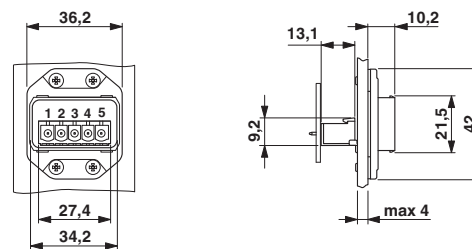
PROFINET POWER panel mounting frame, IP67

Panel cutout

Dimensioned drawing



Dimensioned drawing

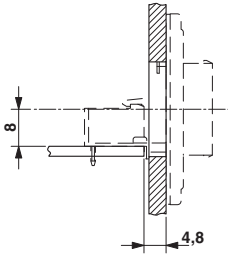


PCB alignment, straight solder pins

PROFINET POWER panel mounting frame, IP67

Panel mounting frames - VS-PPC-F2-MSTB-MNNA-1R-P - 1608087

Dimensioned drawing



PCB alignment, angled solder pins

© Phoenix Contact 2012 - all rights reserved
<http://www.phoenixcontact.com>