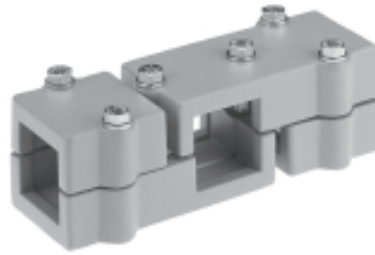
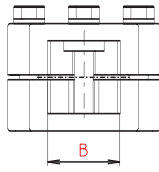
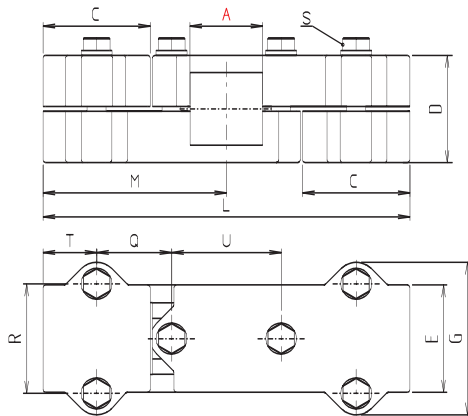


Winkelklemmstücke Angle clamps

Industrieform

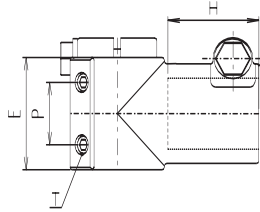
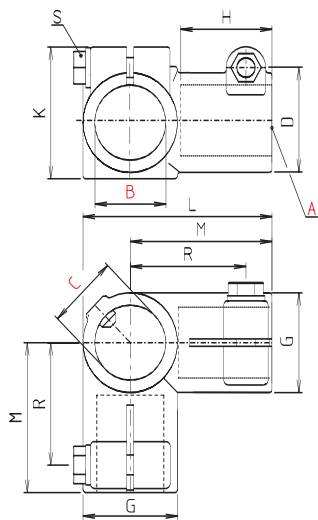
Industrial design

WVT



Code-No.	Type	A	B	C	D	E	G	L	M	Q	R	S	T	U	m [g]
112 500 110_ _ _	WVT 25	25,3	25,3	46	45	45	62	154	77	31,5	46	M8x45	22,5	46	601
113 000 110_ _ _	WVT 30	30,3	30,3	46	45	45	62	154	77	31,5	46	M8x45	22,5	46	549
113 500 110_ _ _	WVT 35	35,4	35,4	60	60	60	75	196	99	40	57	M8x60	30	57	1084
114 000 110_ _ _	WVT 40	40,4	40,4	60	60	60	75	196	99	40	57	M8x60	30	57	1022

WE



WE 12-18



WE 20-50

Code-No.	Type	A	B	C	D	E	G	H	K	L	M	R	S	T	m [g]
111 200 060_ _ _ 5	WE 12	12	12	12	25	25	31,5	20	-	54	41,5	35,5	M6x25	M6x25	141
111 400 060_ _ _ 5	WE 14	14	14	14	25	25	31,5	20	-	54	41,5	35,5	M6x25	M6x25	133
111 600 060_ _ _ 5	WE 16	16	16	16	25	25	31,5	20	-	54	41,5	35,5	M6x25	M6x25	125
111 800 060_ _ _ 5	WE 18	18	18	18	25	25	31,5	20	-	54	41,5	35,5	M6x25	M6x25	116
112 000 060_ _ _ 5	WE 20	20	20	20	40	45	40	35	51	80	60	49	M8x35	M8x15	390
112 500 060_ _ _ 5	WE 25	25,1	25,1	25,1	40	45	40	35	51	80	60	49	M8x35	M8x15	323
113 000 060_ _ _ 5	WE 30	30,1	30,1	30,1	40	45	40	35	51	80	60	49	M8x35	M8x15	250
113 200 060_ _ _ 5	WE 32	32,15	32,15	32,15	56	60	56	55	69	116	88	70	M10x50	M8x10	977
113 500 060_ _ _ 5	WE 35	35,15	35,15	35,15	56	60	56	55	69	116	88	70	M10x50	M8x10	909
114 000 060_ _ _ 5	WE 40	40,15	40,15	40,15	56	60	56	55	69	116	88	70	M10x50	M8x10	769
114 200 060_ _ _ 5	WE 42	42,2	42,2	42,2	66	70	66	65	78	136	103	82	M10x60	M10x12	1365
114 500 060_ _ _ 5	WE 45	45,2	45,2	45,2	66	70	66	65	78	136	103	82	M10x60	M10x12	1250
114 800 060_ _ _ 5	WE 48	48,2	48,2	48,2	66	70	66	65	78	136	103	82	M10x60	M10x12	1113
115 000 060_ _ _ 5	WE 50	50,2	50,2	50,2	66	70	66	65	78	136	103	82	M10x60	M10x12	996

Bestellhinweise siehe Seite 6-7 Order instructions see page 6-7