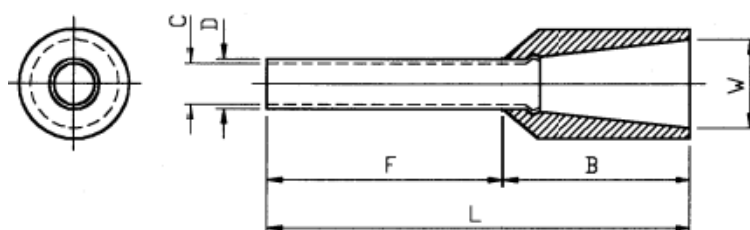


Datasheet

Insulated Bootlace Ferrule, 8mm Pin Length

RS Stock number [513-2607](#)

Drawing (mm):



Stock Number	F ±0.50	L ±1.00	W ±0.30	B ±0.50	D ±0.10	C ±0.10	Colour
513-2607	8	14.3	3	6.3	1.7	1.4	RED

Specifications:

1. MAXIMUM ELECTRICAL RATING: 105°C 300 VOLTS MAX.
2. INSULATION MATERIAL: NYLON
3. TERMINAL MATERIAL: COPPER TUBE.
4. WIRE RANGE: 18A.W.G. (1.0 mm²)