

Accessories - IC-DFR 15 - 1852150

Please be informed that the data shown in this PDF Document is generated from our Online Catalog. Please find the complete data in the user's documentation. Our General Terms of Use for Downloads are valid (<http://download.phoenixcontact.com>)




Accessories, Number of positions: 15, Pitch: 5.08 mm, Color: green, This assembly frame can only be used in combination with IC 2,5/...-STGF-5,08

Why buy this product

- ✓ Feed-through assembly frame for inverted COMBICON plug IC 2,5/-STGF-5,08
- ✓ Vibration-resistant screw connection for both plugs provided by screw flanges
- ✓ Up to a panel thickness of 1.5 mm, the frame can be screwed before the IC plug is mounted
- ✓ Fitting the MSTB 2,5/...-STF-5,08 plug from outside
- ✓ Snap-locking of the IC plug into the frame
- ✓ Frame in plate cutout can be used and screwed on.



Key commercial data

Packing unit	50 pc
GTIN	 4 017918 109035
Weight per Piece (excluding packing)	3.43 g
Custom tariff number	39269097
Country of origin	Poland

Technical data

Dimensions

Pitch	5.08 mm
Dimension a	71.12 mm

General

Range of articles	IC-DFR
Insulating material group	I
Nominal cross section	2.5 mm ²
Insulating material	PA
Inflammability class according to UL 94	V0

Accessories - IC-DFR 15 - 1852150

Technical data

General

Number of positions	15
---------------------	----

Classifications

eCl@ss

eCl@ss 4.0	272607xx
eCl@ss 4.1	27260701
eCl@ss 5.0	27260701
eCl@ss 5.1	27260701
eCl@ss 6.0	27260704
eCl@ss 7.0	27440402
eCl@ss 8.0	27440402

ETIM

ETIM 3.0	EC000879
ETIM 4.0	EC000879
ETIM 5.0	EC000879

UNSPSC

UNSPSC 6.01	30211810
UNSPSC 7.0901	39121409
UNSPSC 11	39121409
UNSPSC 12.01	39121409
UNSPSC 13.2	39121409

Accessories

Accessories

Mounting material

Screw set - DFK-MSTB-SS - 0708263



Screw set, for securing the header to the device wall, consists of an M3 x 10 screw, with a spring washer and a nut

PCB plug

Accessories - IC-DFR 15 - 1852150

Accessories

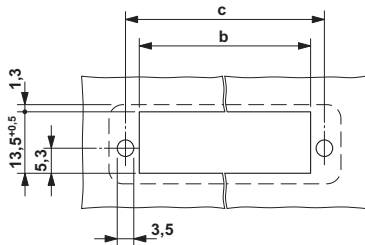
Printed-circuit board connector - IC 2,5/ 2-STGF-5,08 - 1825501

Plug component, Nominal current: 12 A, Rated voltage (III/2): 320 V, Number of positions: 2, Pitch: 5.08 mm, Connection method: Screw connection, Color: green, Contact surface: Tin

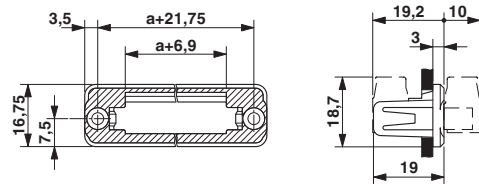


Drawings

Drilling diagram



Dimensioned drawing



Dimension b: 10.84 mm + (no. of pos. x 5.08 mm)
Dimension c: Dim. b + 5.83 mm