



Healthcare Sector Products



MK Electric is the UK's premium electrical accessories brand and for over 90 years has been offering a comprehensive range of solutions for specifiers and installers of electrical products with unrivalled levels of quality, reliability and safety.

Across the board, from product innovation through to delivery and sales support, the combination of MK's products and services provides an extremely effective offering to those involved with electrical accessories in the Healthcare Sector.



MK Electric: Quality, reliability, safety and res

For over 90 years we have listened carefully to our customers, constantly striving for better products, underpinned by excellent customer service levels.

- **Quality** – manufactured to ISO 9002 certification, using superior manufacturing techniques
- **Reliability** – comprehensive 20 year product guarantee, 10 years for Electronic Devices, Circuits
- **Safety** – 100% factory tested for a 'fit and forget' installation every time
- **Responsibility** – innovation for the built environment – preservation for the natural environment

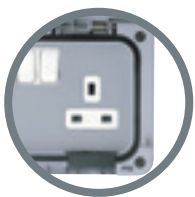
MK Sockets – The Safest Available

MK's sockets have a "child resistant shutter system", which is designed to inhibit access to the electricity supply, unless all three pins of a British plug are in position.

By choosing our safety sockets, you can be sure that you are giving your building the ultimate in electrical protection.

All electrical sockets manufactured to the British Standard must incorporate a shutter mechanism. British standards ensure a minimum safety level is achieved in the design and manufacture of electrical accessories. MK's socket design offers the maximum safety benefit and is the most difficult shutter mechanism to defeat unless correctly being used with a British plug.

All 13A MK sockets incorporate the 3-pin shutter system. Other MK Wiring Device ranges include:



MASTERSEAL



LOGIC PLUS



ALBANY PLUS



METALCLAD PLUS

3-PIN "CHILD RESISTANT SHUTTER SYSTEM"
MK safety shutter only opens when pressure is applied simultaneously through the three pins, considerably reducing misuse



DOUBLE POLE SWITCHING
Switches both live and neutral contacts (neutral makes first, breaks last) for added end user safety

For more information on MK's Wiring Devices ranges, visit:

www.mkelectric.co.uk





possibility

ving to develop ever more innovative

s

circuit Protection and Cable Management

nment



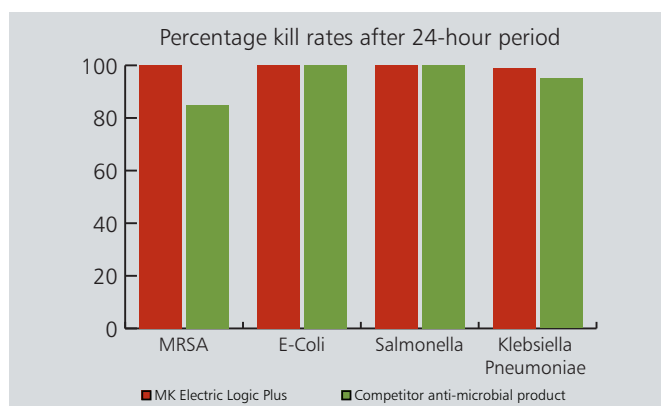
Anti-Microbial Products

The media continues to dedicate news time and column inches to the issues around the cleanliness within health establishments such as hospitals, surgeries and dentists etc, resulting in an environment of concern amongst the general public, Government and the Healthcare sector.

In 2008, MK Electric commissioned independent testing on the Logic Plus range and a competitor's 'Anti-Microbial' range by a reputable independent UKAS accredited laboratory. The laboratory tested the products, after cleaning with disinfectant (the Government's 'Deep Clean' policy targeted all hospitals to undergo a deep clean by March 2008, which included cleaning all fixtures and fittings).

The method

The organisms MRSA, E-Coli, Salmonella and Klebsiella Pneumoniae were applied to the products. Results were collected at 0 minutes, 4 hour, 8 hour and 24 hour intervals.



Source: MK commissioned report, 2008

Summary

MRSA Logic Plus has a kill rate of 99.9% compared to the competitor's Anti Microbial product with only 86.4%.

Both products had an equal 99.9% kill rate for **E-Coli** and **Salmonella**.

Klebsiella Pneumoniae Logic Plus has a kill rate of 98.9%, compared to the competitor's Anti Microbial product with 95.4%.

The Logic Plus range is produced using Urea Formaldehyde, a high grade thermoset material, which has similar inherent properties to antimicrobial additives, which inhibit the growth of infectious diseases such as MRSA, E-Coli, Salmonella and Klebsiella Pneumoniae. In addition, Logic Plus products are scratch-free thanks to high quality mould tools, which means there are no dirt traps for bacteria to breed.

Whilst cleanliness is key to fighting these infections, and not replaced by the use of MK's Logic Plus products, the independent results show that the range is more effective than a competitor's Anti-Microbial products at killing MRSA organisms and contributes beneficially to any hygiene regime.

Healthcare Sector: MEIGaN

The MEIGaN (Medical Electrical Installation Guidance Notes) document published in September 2007 has given healthcare organisations clear and strict guidance regarding the electrical wiring and installation within new, refurbished or upgraded healthcare establishments.



The key stipulations outlined are:

IPS (isolated power supply) socket outlets shall be double pole or unswitched clean earth sockets, colour coded blue, engraved in white lettering 'Medical equipment only'. Page 18, Para 6.1

Where existing metal back boxes are to be used, clean earth sockets shall be fitted. Page 18, Para 6.2

In order to meet these requirements MK have produced double gang socket outlets that are available either switched or unswitched under the following list numbers:

- | | |
|--------------------|--|
| K2947CE BLU | 2G 13A Clean Earth DP Socket with Outboard Rockers |
| K733CE BLU | 2G 13A Clean Earth Unswitched Socket |

Single gang and non clean earth variants are also available through our design service.

Domestic extension mains leads shall not be used in any part of the installation. Page 17, Para 6.1

Due to the ever increasing demand for power (and data) in healthcare establishments MK offers product solutions – for both new build and retrofit applications, with the additional benefit of easily ‘adding on’ as needs evolve.

Prestige 3D – Three compartment trunking, available in dado, skirting and compact versions.

Cablelink Plus – Floor Distribution Systems for Raised Floor, Screed Floor and Flush Floor.

For more information on MEIGaN visit:

www.mhra.gov.uk





Building Regulations Parts L & M

Part L: Conservation of Fuel and Power

In April 2006, Part L of the Building Regulations, Conservation of Fuel and Power, was revised and reissued to ensure compliance with the legal obligations set out in the European Union Energy Performance of Buildings Directive.

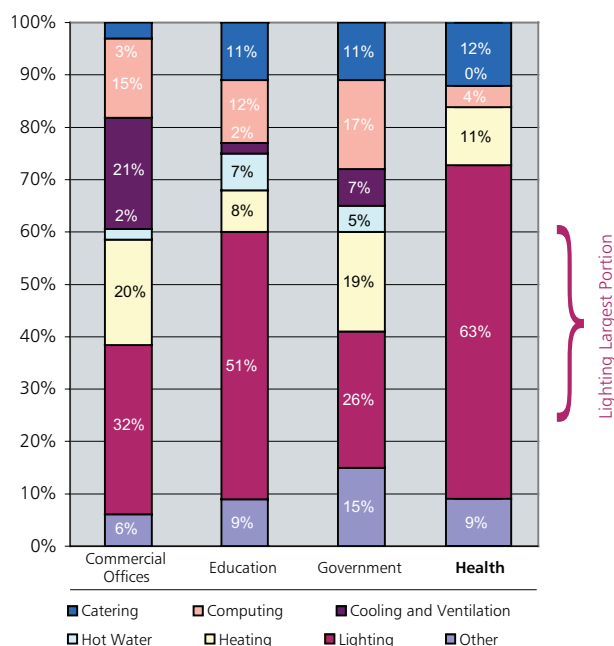
Statistics published by the Building Research Establishment show that across a broad selection of non-domestic applications, lighting represents 40% of a building's total energy consumption.

The 'Health' application shows lighting to be by far the function with the highest energy usage – 63% – which also represents the largest opportunity for energy savings.

MK Sensors not only help realise the highest potential savings in energy consumption, and thus to energy bills, but also offer the shortest payback periods.

The Building Regulations clearly state the need to provide energy efficient fixed building services with effective controls.

For further information on Part L Regulations and MK solutions, visit: www.switchonmk.co.uk



Part M: Access to and the use of buildings

It is estimated that 8.6 million people in the UK are classified as disabled. In 2004, under the Building Regulations 2000, Part M was issued. Part M is concerned with the entry and use of all building structures and facilities by all people, whether visiting, working or dwelling in them.

Firstly, appropriate selection of products considered to meet the regulations must be made, secondly they must be installed and positioned to meet the regulations.

However, when it comes to specifying electrical accessories, the onus for following the regulations is on the specifier or contractor.

MK Electric offer a wide range of products which will support compliance with Part M, for further information visit:

www.switchonmk.co.uk



MK Electric products: Typical specification for

echo™

- Innovative range of entirely wireless, batteryless and self powered switches
- Range of 30 metres in a typical building
- Available in a choice of MK finishes



ECHO – LOGIC PLUS FINISH

Logic Plus

- Total Safety – Sockets incorporate the MK 3-pin shutter system
- Made from a high grade thermoset material which has an inherent antimicrobial property
- Vast range of products for a total solution



LOGIC PLUS

Metalclad Plus

- Tough and impact resistant
- Made from heavy gauge steel, designed for tougher environments
- Comprehensive range available in Aluminium and White finishes
- Ideal for areas of high traffic, such as wards and corridors



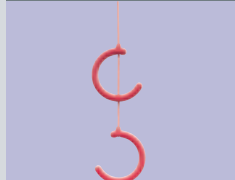
METALCLAD PLUS – WHITE FINISH

Part M Solutions

- Logic Plus in Graphite finish – sockets and switches that visually contrast with their background
- Wide rocker switches – large rocker pads for ease of activation
- Standard MK sockets have a red flash which is visible when the switch is in the 'on' position. Sockets and switches are also available with neon indicators
- Pull cord switches and bangles are available – including red cords and bangles for emergency use
- Ideal for all public areas and supports compliance to Part M of the Building Regulations



LOGIC PLUS WIDE ROCKER SWITCH IN GRAPHITE FINISH



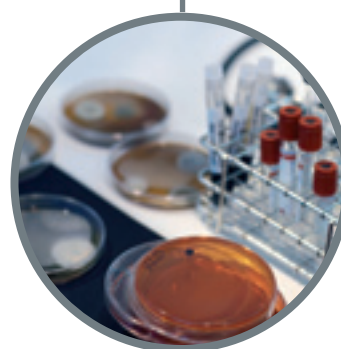
RED EMERGENCY PULL CORD WITH 2 RED BANGLES

Lockable Sockets and Switches

- Key operated 20A DP switches and 13A 1G DP sockets
- Allows the user to secure the power and prevent unwanted tampering
- Sockets incorporate the MK 3-pin shutter system
- Available in Metalclad Plus, Masterseal, Albany Plus and Edge ranges
- Ideal for use in public areas and those where the power supply needs to be secured, such as corridors and reception areas



LOCKABLE SOCKETS





for a healthcare establishment



MK SENSORS

Part L Solutions – MK Sensors

- Range of Ceiling and Corner mounted and Long Range Sensors
- All products are easy to install and commission
- Saves lighting energy (up to 90%), time, cost and supports compliance to Part L of the Building Regulations
- Ideal for areas such as toilets, offices, corridors and storage areas



PRESTIGE 3D - DADO

Prestige 3D Cable Management

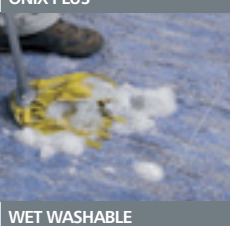
- Family of three compartment trunking – dado (pictured), skirting and compact
- Independently verified to be 40% faster to install than similar competitor products
- Cat 6 compliant – greater trunking depths, patented Data Sweep™
- Ideal for areas with high demand for power and data outlets such as offices, theatres and laboratories



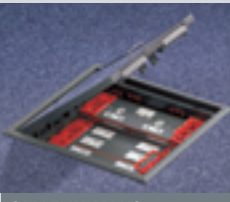
ONIX PLUS

Ackermann Onix Plus Power and Data Distribution

- Floorboxes and Power Grommets – innovative solution to hard floor power and data distribution for screed floors with coverings such as laminate, wood, stone and marble.
- Wet washable and IP44 when not in use
- Superior load bearing performance and supports Cat 6 compliance
- Ideal for reception areas, corridors and wards – areas with high foot fall and equipment



WET WASHABLE



CABLELINK PLUS MODULAR (RAISED FLOOR)

Ackermann Cablelink Plus Floor Distribution Systems

- Family of Raised, Screed and Flush Floor Power and Data Distribution Systems
- Designed to ensure robustness, faster installation times and maximum life span flexibility
- Superior load bearing performance and supports Cat 6 compliance
- Ideal for offices, reception areas, and meeting rooms



CABLELINK PLUS FLUSH (FLUSH FLOOR)

Design Service

The **MK Design Service** is perfect for when only a customised solution can meet your requirements. Our dedicated team can help – be it a particular finish, functionality or even a combination of both – from concept to completion.



MK Design Service is totally focused on achieving the perfect result, utilising its technical, manufacturing and supply expertise to ensure your vision is realised.

Simply let us know how we can help by visiting www.switchonmk.co.uk. We promise to respond within 48 hours to discuss your requirements and together create a design specification that really works for you.

MK Electric

Tech Helpline Tel 01268 563720

Web www.mkelectric.co.uk

UK The Arnold Centre Paycocke Road Basildon Essex SS14 3EA United Kingdom

Customer Service Tel 01268 563404

Customer Service Fax 01268 563405

E-mail mkorderenquiries@honeywell.com

Ireland Unit 55 Park West Industrial Park Nangor Road Dublin 12 Republic of Ireland

Customer Service Tel +353 (0)1429 6500

Customer Service Fax +353 (0)1429 6501

E-mail ireland.sales@honeywell.com