

Rittal – The System.

Faster – better – everywhere.

Mounting plate for GA – GA 9110.700

Date : Feb 16, 2016

ENCLOSURES

POWER DISTRIBUTION

CLIMATE CONTROL

IT INFRASTRUCTURE

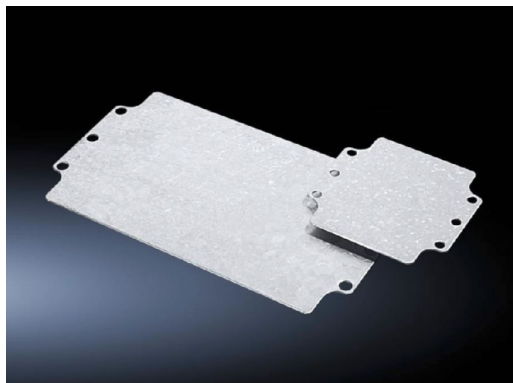
SOFTWARE & SERVICES

FRIEDHELM LOH GROUP



Mounting plate for GA – GA 9110.700

created : 16.02.2016 build on www.rittal.com/uk-en



Product description

Description: For universal interior installation, with mounting holes.

Material: Sheet steel

Surface finish: Zinc-plated

Packs of: 2 pc(s).

EAN: 4028177154308

Customs tariff number: 73269098

eCl@ss 5.1: 27189234

eCl@ss 7.0: 27189234

ETIM 6.0: EC000213

Product features

To fit: Enclosure type: GA
Width: = 220 mm
Height: = 120 mm

Mounting plate: Width: 207 mm
Height: 107 mm

Weight/pack: 0.45 kg

Downloads

CAD drawings: [Request](#)
