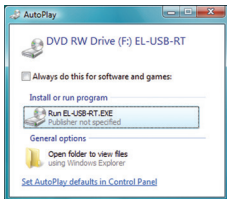


**EL-USB-RT  
INSTALLATION AND  
OPERATION GUIDE**

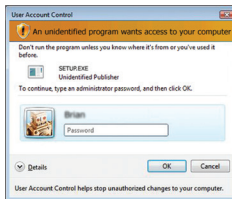


# SOFTWARE INSTALLATION

## Windows™ 2000/XP/Vista(32-bit)



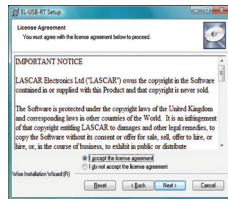
1. Insert the EL-USB-RT Configuration Software CD into the CD drive of your computer. If the CD does not automatically load, navigate to the CD and double click "EL-USB-RT.exe"



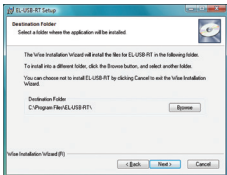
2. Installing software requires administrative privileges. Accept the "User Account Control" request, enter password if necessary



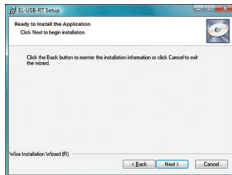
3. Click "Next"



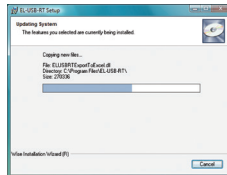
4. Read the "IMPORTANT NOTICE", select "I Agree" and "Next"



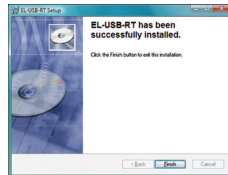
5. To accept the default install location, click "Next"



6. Click "Next" to start the Installation  
**NOTE** - A progress bar will be displayed until the installation is complete



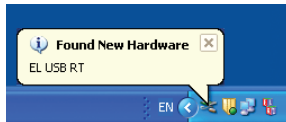
7. EasyLog USB is being installed



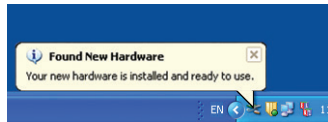
8. Click "Close". An icon will now be placed on your desktop and in the notification area of the taskbar

# USB DRIVER INSTALLATION

Windows™ XP



1. Insert the USB data logger into a USB port on the computer. The following screens should automatically appear as the EL-USB-RT uses a standard built in Windows drivers

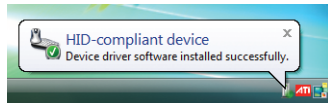
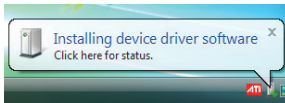


2. Installation is now complete

## Windows™ Vista(32-bit)



1. Insert the USB data logger into a USB port on the computer. The following screens should automatically appear as the EL-USB-RT uses a standard built in Windows drivers



2. Installation is now complete

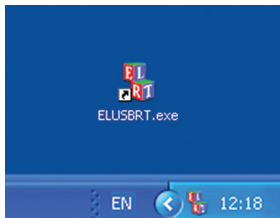
**NOTE** - At various times Vista may ask security questions; allow access when prompted

**You have successfully installed the necessary software and driver for your EL-USB-RT data logger.**

# 1 HOW TO USE EL-USB-RT SOFTWARE

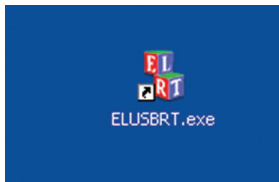
Windows™ 2000/XP/Vista(32-bit)

Once installed, the EL-USB-RT software should automatically run. Icons will be displayed in the **"Notification Area"** of your screen and on the desktop.

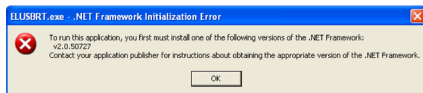


As seen on the desktop and **"Notification Area"**

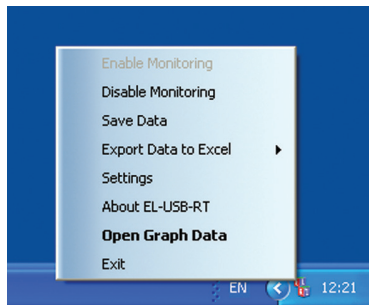
If the icon in the **"Notification Area"** does not appear, double click the EL-USB-RT icon on the desktop.



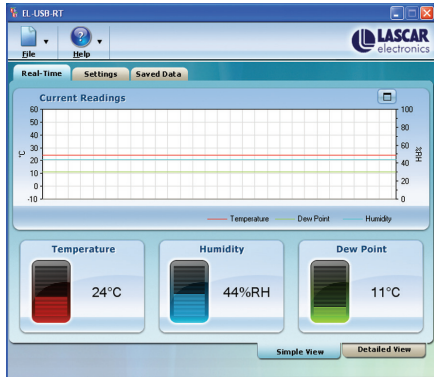
If the following error message appears, you will need to install .NET framework Ver 2.0, the redistributable of which is provided on the software CD, and is entitled: dotnetfx.exe.



To access the software features, right click on the icon within the **"Notification Area"**. You will see the following menu:



If “Open Graph Data” is selected, you will see the following:



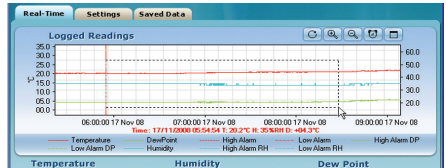
This shows a rolling graph of the readings taken in the last minute.

To view a detailed graph, click on “**Detailed View**”. This will display all the data recorded for the current session. This graph does not automatically update.

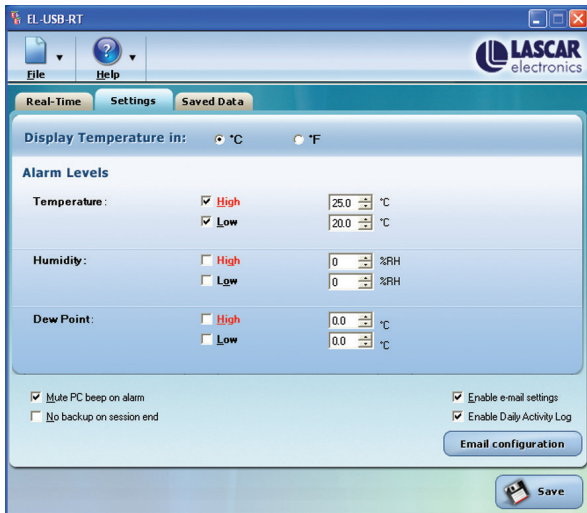


To include the latest data readings select “**Update**”.

To view an area of this graph in more detail, use the left mouse button to drag a rectangle around the region to be magnified. The previous view can be restored by clicking on “**Zoom Out**”.



Select **“Settings”** to change the scale and alarms as shown:



You can change the scale between Fahrenheit and Celsius, set alarms, mute the audible alarm, switch off automatic saving\*, enable e-mail alert sending and gain access to the E-mail configuration section (see **“4”** for E-mail configuration).

\* The current session data is stored in a temporary file. Unless the data is saved at the end of a session, this data will be lost.

Other options can be accessed by right clicking on the icon in the **“Notification Area”** or file menu, such as:

**“Enable Monitoring”** and **“Disable Monitoring”** starts and stops the software from taking readings.

**“Save Data”** saves the data recorded so far. \*

**“Export Data to Excel”** opens an Excel worksheet and automatically generates a graph.

**“About EL-USB-RT”** provides you with Lascar’s contact details and the software version number.

**“Exit”** closes the EL-USB-RT application.

The EL-USB-RT can be configured to send an alert via E-mail in the event of an alarm condition being met. Click **“Settings”** to access E-mail configuration.

## 4 CONFIGURING EMAIL ALERTS

To configure E-mail alerts, you need to provide the SMTP details of your E-mail account. These include:

**Email Plug-in setting**

**Email Settings** | **Message Settings** | Show Wizard

Send mail to:  **Add**

Recipients:

Alarm time out value:  minutes **Delete**

**SMTP Settings**

Use EL-USB-RT SMTP Server

Outgoing mail server name(SMTP):

Outgoing mail server port number(SMTP):   
(Standard SMTP port number is 25)

User Name:

Password:

From Address:

Enable Secure connection for server (SSL)

**Import SMTP settings** **Test Email**

**Clear** **Save** **Cancel**

“Outgoing mail server name (SMTP)”, “Outgoing mail server port number (SMTP)”, “User name”, “Password”, “From address” and “Enable secure connection for this server (SSL)” settings.

This information can be found within your E-mail client software or if it is an internet E-mail account with their online help regarding SMTP/POP access.

Click “**Settings**” and then the “**E-mail configuration**”. When first accessed, a configuration wizard will appear to assist you in setting up your e-mail alerts.

Follow the on-screen prompts.

Following completion of the configuration wizard you can access the E-mail settings screen as detailed above. This allows you to manually adjust the e-mail alert settings.

You can re-run the setup wizard at any time by clicking on the “**Show Wizard**” text.

**LASCAR**  
electronics

**Your E-mail Client**

If you are not sure of these settings it maybe possible to import them from your e-client (Outlook and Outlook Express Only).

**Import SMTP settings**

Enter your Email Account Name

This is the name you use to sign into your e-mail account. This normally is either the portion of your email address before the '@' sign or your complete email address.

Enter your Email Account Password

This is the password you use to access you e-mail account.

**<< Back** **Next >>** **Finish** **Cancel**

# THE EASYLOG USB RANGE

Part No	Function	Range	Accuracy (overall error)		Readings	Battery	Battery Life*
			Typ.	Max.			
EL-USB-1	Temperature	-35 to +80 °C (-31 to +176 °F)	±1°C (±2°F)		16,382	3.6V ½AA	1 year
EL-USB-1-PRO	High temperature	-40 to +125 °C (-40 to +257 °F)	±0.2°C (±0.4°F)	±0.5°C (±1°F)	32,510	3.6V ¾AA	3 years
EL-USB-2	Temperature, humidity & dew point	-35 to +80 °C (-31 to +176 °F) 0 to 100%RH	±0.5°C (±1°F)	±2°C (±4°F)	16,382	3.6V ½AA	1 year
			±3%RH	±6.0%RH	16,382		
EL-USB-2+	Increased accuracy temperature, humidity & dew point	-35 to +80 °C (-31 to +176 °F) 0 to 100%RH	±0.3°C (±0.6°F)	±1.5°C (±3°F)	16,382	3.6V ½AA	1 year
			±2.0%RH	±4.0%RH	16,382		
EL-USB-2-LCD	Temperature, humidity & dew point with LCD	-35 to +80 °C (-31 to +176 °F) 0 to 100%RH	±0.5°C (±1°F)	±2°C (±4°F)	16,379	3.6V ½AA	1 year
			±3.0%RH	±6.0%RH	16,379		
EL-USB-2-LCD+	Increased accuracy temperature, humidity & dew point with LCD	-35 to +80 °C (-31 to +176 °F) 0 to 100%RH	±0.3°C (±0.6°F)	±1.5°C (±3°F)	16,379	3.6V ½AA	1 year
			±2.0%RH	±4.0%RH	16,379		
EL-USB-3	Voltage	0 to 30V d.c.	±1%		32,510	3.6V ½AA	1 year
EL-USB-4	Current loop	4 to 20mA	±1%		32,510	3.6V ½AA	1 year
EL-USB-TC	Thermocouple (J, K and T-type) K-type probe included	-200 to +1350°C (-328 to +2462°F) (K-type)	±1°C (±2°F)		32,510	3.6V ½AA	6 months
		-200 to +1190°C (-328 to +2174°F) (J-type)					
		-200 to +390°C (-328 to +734°F) (T-type)					
EL-USB-TC-LCD	Thermocouple with LCD (J, K and T-type) K-type probe included	-200 to +1350°C (-328 to +2462°F) (K-type)	±1°C (±2°F)		32,510	3.6V ½AA	6 months
		-200 to +1190°C (-328 to +2174°F) (J-type)					
		-200 to +390°C (-328 to +734°F) (T-type)					
EL-USB-CO	Carbon monoxide	0 to 1000ppm <b>NOT A LIFE SAVING DEVICE</b>	±6ppm		32,510	3.6V ½AA	3 months
EL-USB-CO300	Carbon monoxide	0 to 300ppm <b>NOT A LIFE SAVING DEVICE</b>	±4ppm		32,510	3.6V ½AA	3 months
EL-USB-LITE	Low cost temperature	-10 °C to +50 °C (+14 to +122 °F)	±1°C (±2°F)		4,080	CR1620 Lithium coin cell	1 month
EL-USB-RT	Real-time temperature & humidity monitor	-20 to +70 °C (-4 to +158 °F)	±1.5°C (±3°F) ±4.5%RH		7 days	N/A	N/A

\*Depending on logging rate, ambient temperature, and use of alarm LED