

### Principal Applications

Designed for continuous recirculation of carbonated water, aggressive chemicals, chilled water, pure or precious liquids in high pressure systems

### Wetted Materials

PPS Pump Body  
PPS Spindle Housing  
LCP Impeller  
EPDM O rings

### Features

Manufactured in chemically resistant thermo-plastics  
Operating at an optimum flow rate of 5 litres/minute  
Magnetic coupling provides an energy efficient thermal shield,  
minimising heat transfer to pumped fluid  
Temperature stability and product purity ensured  
Leak-free continuous operation  
IPX5 motor enclosure  
Low condensation  
Zero maintenance  
Long life

### HPR10/15

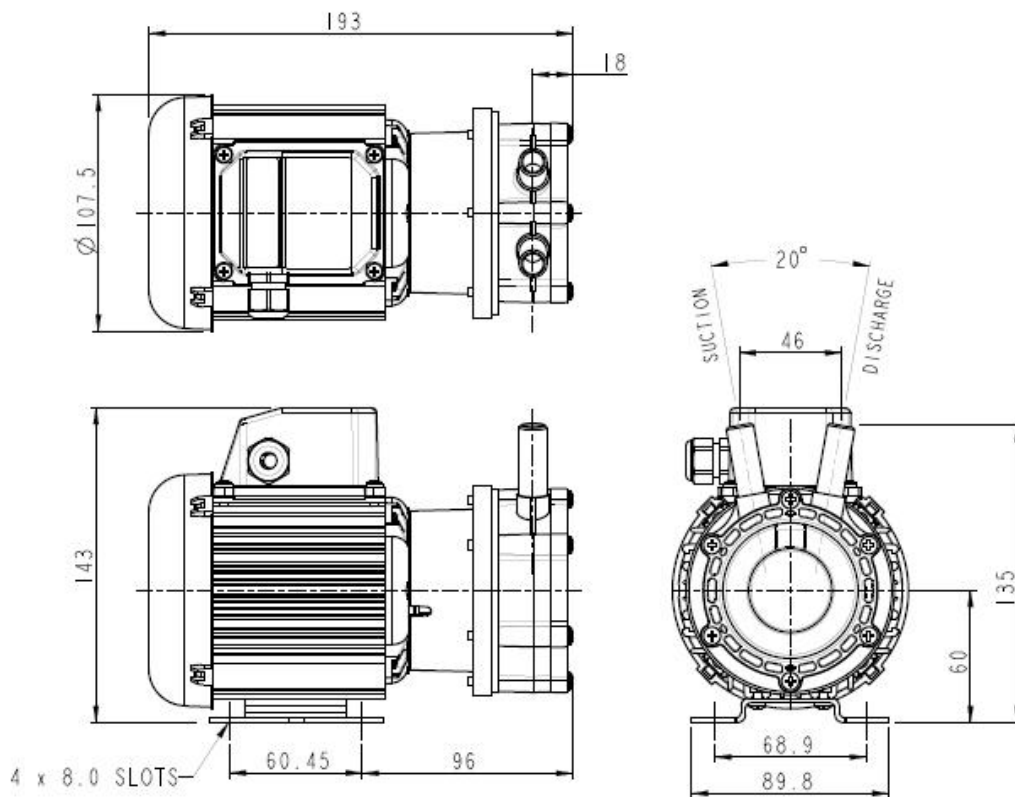
230V 1Ph 50/60Hz  
110V 1Ph 50/60Hz

### Port Details

1/2" standard, 15mm optional  
1/2" standard, 15mm optional

Drawings not to scale  
Dimensions in millimetres

**HPR10/15**

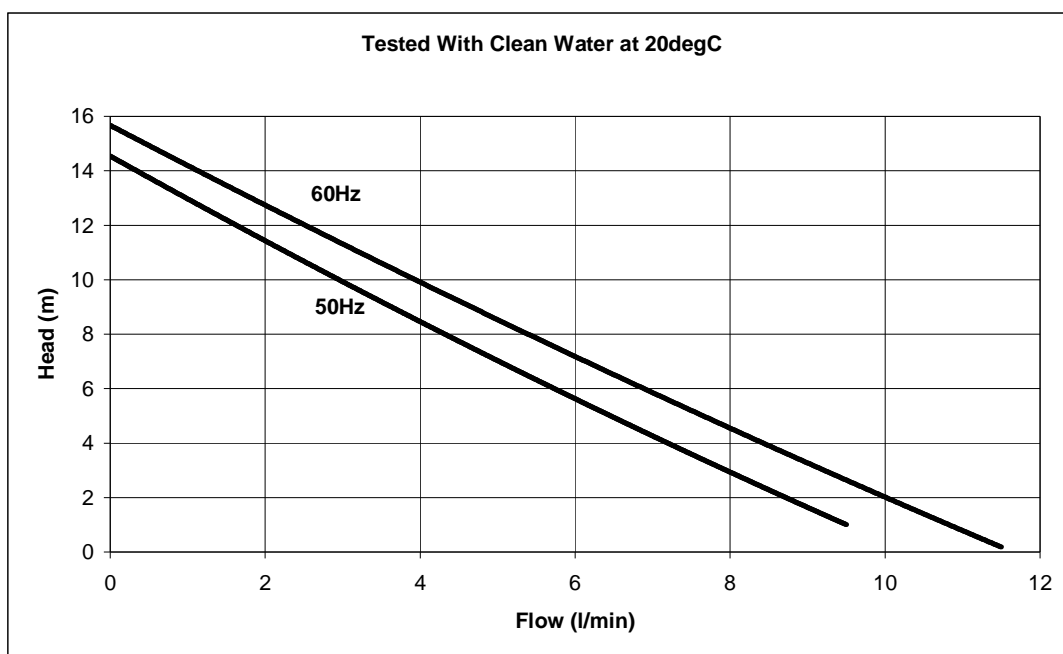


**Specification**

Model	Overall height (mm)	Overall length (mm)	Overall width (mm)	Weight (kg)	Max body pressure (bar)	Run-out flow rate (l/min)	Closed valve head (m)	Temp range (degC)	*Max specific gravity	Motor output (watts)
HPR10/15	143	193	90	3.1	6	50 Hz 10.1	50 Hz 14.6	-20 to +85	1.0	60
						60 Hz 11.5	60 Hz 15.8			

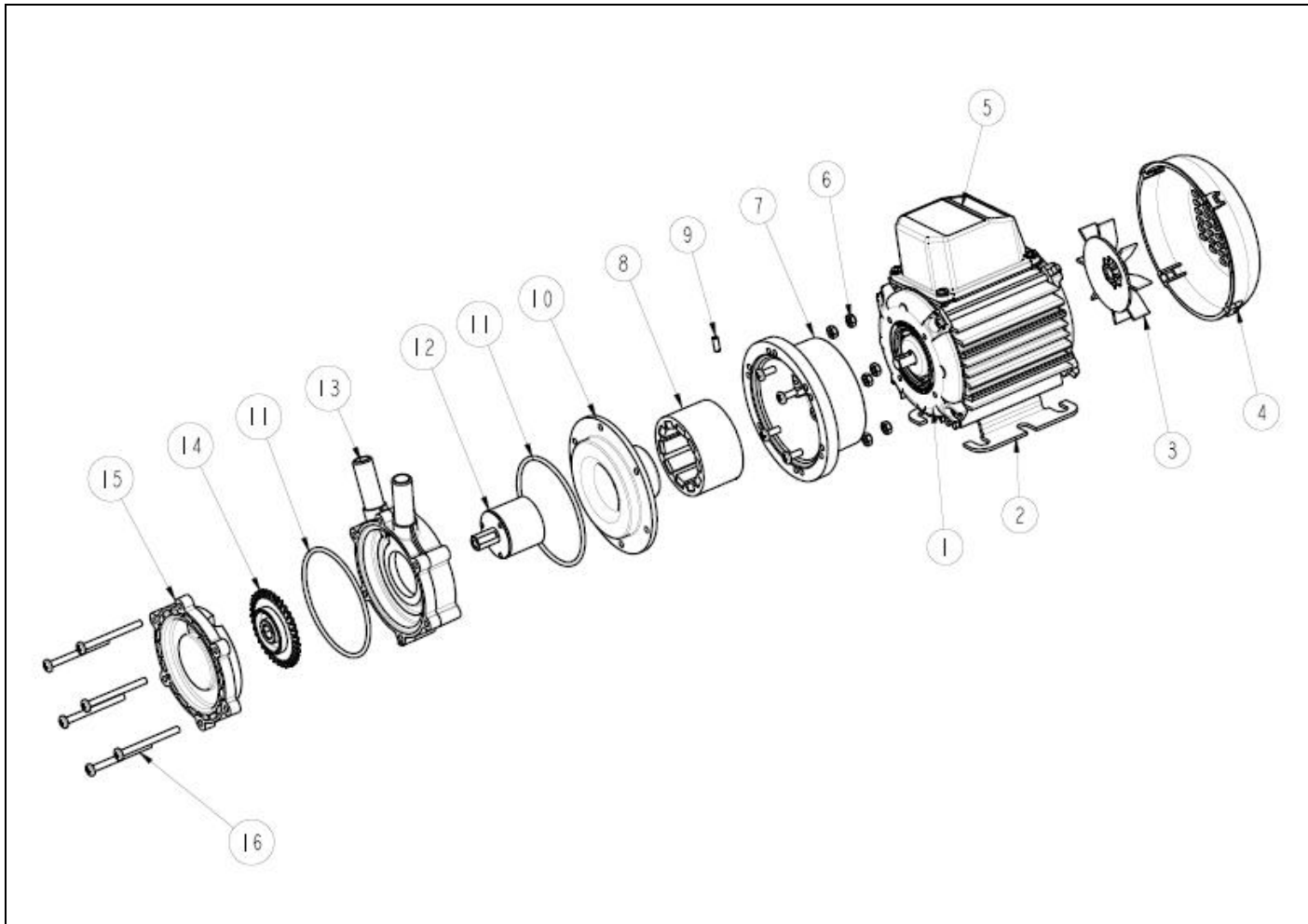
\*Assuming maximum viscosity of 30cp. Refer to Totton Pumps for higher viscosities and specific gravities

**Performance**



**NOTE:** These magnetically coupled pumps are designed for use with clean fluids. Solids will cause jamming. Abrasives will reduce pump life & invalidate the warranty.  
HPR pumps are not self-priming & are not designed to run dry  
The company reserves the right to change specifications

## Part List



Item Number	Description	Quantity	Part Number	
1	Motor	1	116842 (230V)	116875 (110V)
2	Mounting Foot	1	036330	
3	Fan	1	046033	
4	Fan Cowl	1	036085	
5	Terminal Box	1	036078	
6	Nut	6	032105	
7	Adaptor	1	036324	
8	Drive Magnet	1	016541	
9	Grub Screw	1	001406	
10	Spindle Housing	1	036389	
11	O Ring	2	022845	
12	Driven Magnet	1	033291	
13	Pump Body	1	043312 ½" ports	043313 15mm ports
14	Impeller	1	033286	
15	Front Plate	1	033285	
16	Screw	6	022060	

### Totton Pumps Ltd.

Tel: +44 (0)23 8066 6685

Fax: +44 (0)23 8066 6880

Email: [info@totton-pumps.com](mailto:info@totton-pumps.com)

Web: [totton-pumps.co.uk](http://totton-pumps.co.uk)