

- ◆ Diesel refuelling
- ◆ Container filling/emptying
- ◆ Wash down for car, caravan & boat
- ◆ Spraying/garden watering

iL280P 12 volt pump

iL280P-24 24 volt pump

Filter attached



iL280P^{plus}

SUBMERSIBLE & IN-LINE

DIESEL or WATER TRANSFER PUMP

iL280P 12 volt d.c

iL280P-24 24 volt d.c

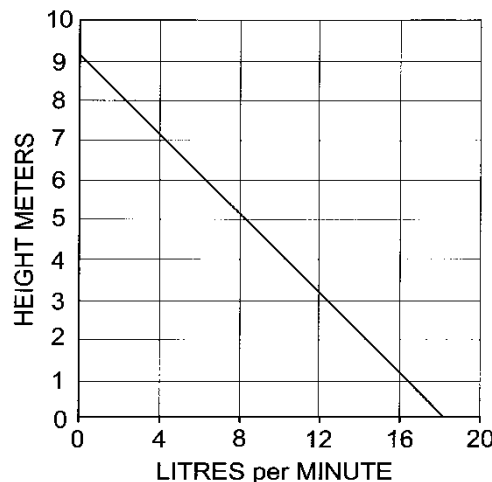
- ◆ Up to 18 litres (4.4 gallons) per minute
- ◆ Suitable for diesel fuel, water, seawater
- ◆ Temperatures up to 80°C
- ◆ Complete with 4m cable and crocodile clips
- ◆ Intermittent duty



Not suitable for pumping petrol, light hydrocarbons, non-aqueous solvents

FLOW RATE:

Flow rate and current reduces as the height to be pumped increases



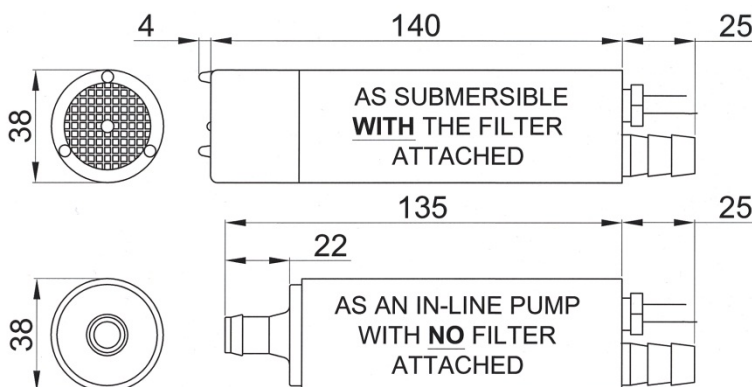
RECOMMENDED FUSE SIZE:

12 volt – 5 amp

24 volt – 3 amp

WEIGHT: 0.5kg

CONNECTIONS: for 12.7mm (1/2") bore hose



Doc 693/13