



**Low-profile SlimRay™ Pre-Wired LED COB Array Holders simplify the LED installation process and reduce assembly time with compression contacts that eliminate hand soldering**

## SlimRay™ Pre-Wired LED Chip-On-Board (COB) Array Holders

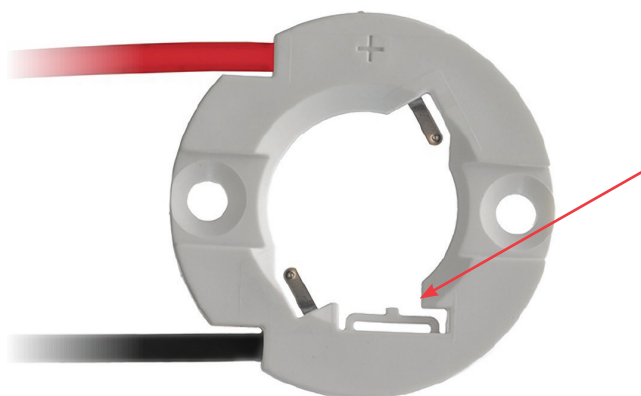
**180555** Holder for LED COB Array 13.35 by 13.35mm

### Features and Benefits

Pre-stripped, pre-installed color-coded power wires that eliminate the need for hand soldering	Enables intuitive anode and cathode identification. Reduces risk of damaging the LED COB. Designed for use with Cree* CXA13 arrays
Industry-leading low-profile design (3.15mm, based on 20 AWG wire)	Allows optics to be mounted closer to the LES (light emitting surface)
Wires terminated with proven Molex crimp-wire processes	Provides high durability and reliability for the life of the LED
Insert-molded attachment of wires to holder housings over 50N	Deliver superior wire-to-holder retention forces. Ensure a stable COB contact interface
Integrated LED pre-hold tab	Secures array prior to mounting the assembly to a heat sink. Minimizes installation time by allowing LED array to be secured to the holder prior to final assembly
Robust housing design	Ensures stable, long-term mechanical attachment even in high ambient temperatures
Gold-plated compression contacts interface with array pads	Provide stable power connections across a wide range of environments and conditions
Standard metric screw-mount attachment	Provides secure attachment with simple alignment to heat sink



SlimRay™ Pre-Wired LED Array Holder for 13.35 by 13.35mm COB Arrays



Integrated pre-hold tab secures array prior to mounting assembly to heat sink

\*Cree is a registered trademark of Cree, Inc.

### Applications

All general illumination applications

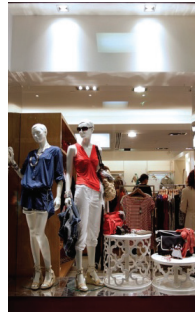
- Downlighting
- Track
- Pendants
- Linear

Area Lighting

- Roadways
- Parking Lots
- Wall Packs



Recessed downlighting in residential and commercial buildings



### Specifications

#### Reference Information

Packaging: Bubble wrap/cardboard layer per PK-180559-020  
 UL File No: TBD  
 UL Rating Pending - 180555  
 CSA File No.: E345583 – Pending: 180555  
 Designed In: Millimeters  
 RoHS: Yes  
 REACH SVHC: Contains SVHC: No

#### Electrical

Voltage (max.): 600V DC  
 Current (max.): 3.0A peak  
 Contact Resistance: 20 milliohms max. change  
 Dielectric Withstanding Voltage: 300V DC  
 Insulation Resistance (min.): 5000 Megohms

#### Mechanical.

Wire Pull Out Force (min.): 50N  
 Durability (min.): 5 Cycles

#### Physical

Housing: White PBT 30% Glass fill UL 94V0  
 Contact: Copper Alloy  
 Plating: Contact Area — Gold (Au)  
 Underplating — Nickel (Ni)

### Ordering Information

Order No.	COB Footprint	Wire Colors	Wire Length	Integrated Pre-Hold Tab	Mounting Method	Wire Trap	Optical Interface
<u>180555-0001</u>	13.35 by 13.35mm	Yellow, White	110.00mm(+/-5mm)	Yes	M2.5 Screw	No	Flat top
<u>180555-0002</u>	13.35 by 13.35mm	Red, Black	254.00mm(+/-5mm)	Yes	M2.5 Screw	No	Flat top