

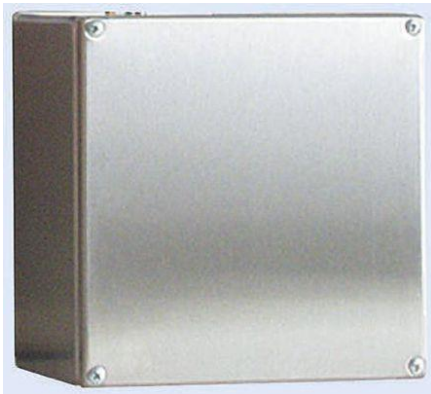


ENGLISH

Datasheet

Stainless Steel IP66 Junction Box, 300 x 150 x 120mm, Unpainted

RS Stock number 758-7056



IP66 Stainless Steel Terminal Boxes

A range of enclosures designed for housing DIN rail terminals, made from AISI 304 stainless steel. These terminal boxes now have a new double lip edge to ensure higher strength and ease of installation for the panel builder/end user.

AISI 304 grade Stainless steel
Doubled lip edges
IP66 protection
Designed for housing DIN rail terminals
Height dimension includes Lid

Colour	Unpainted
Dimensions L x W x H	300 x 150 x 120mm
Height	120mm
IP Rating	IP66
Length	300mm
Material	Stainless Steel
Width	150mm