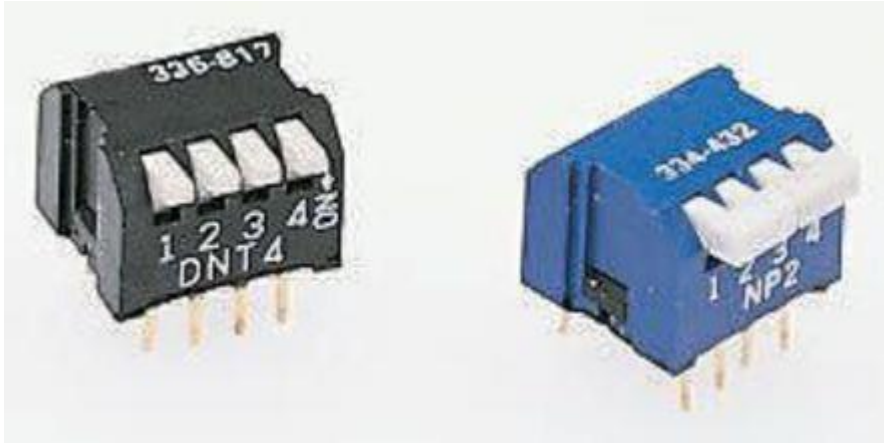


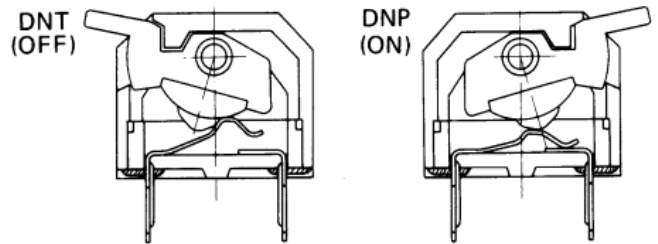
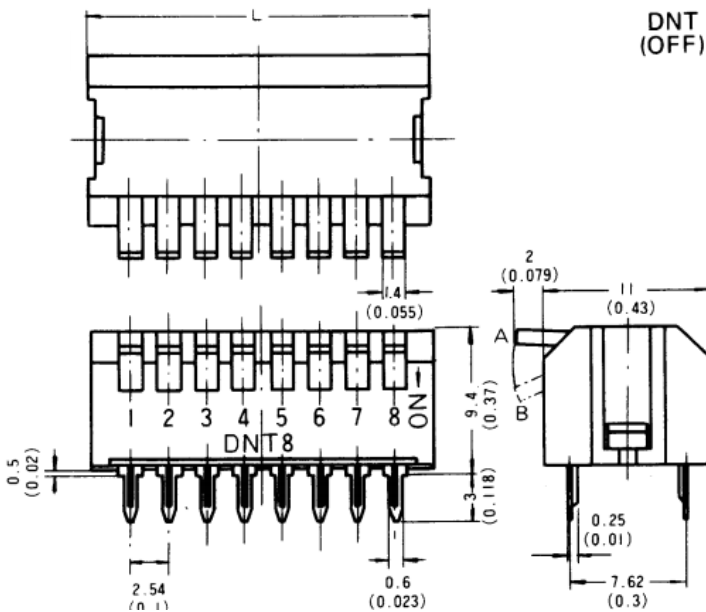
Datasheet

2 Way Through Hole DIP Switch SPST, Lever Actuator

RS Stock 335-817



Dimensions: (mm)



Type No.	No. of Circuits	L	Characteristics	
			A Position	B Position
<u>DNT 4</u>	4	12.8 (0.5)	OFF	ON
<u>DNT 8</u>	8	22.9 (0.9)	OFF	ON
<u>DNP 4</u>	4	12.8 (0.5)	ON	OFF
<u>DNP 8</u>	8	22.9 (0.9)	ON	OFF

*Dimensions in: mm (inches)

Specifications

- Standard 0.3 inch DIL pin spacing, suitable for direct PCB or socket mounting.
- High contact pressure and wiping action ensures low and stable contact resistance (initial contact resistance guaranteed for 10,000 operations)
- Contact design minimises false operation due to shock or vibration (in either ON or OFF position)

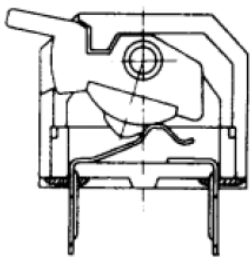
Electrical Characteristics

- Contact Rating: 5Vdc 100mA - switching 25Vdc 25mA - switching 100Vdc 100mA – non switching
- Initial contact resistance: 50m Ω at 2Vdc
- Electrical Life: 10,000 operations (min)
- Insulation resistance: 100M Ω 100Vdc
- Dielectric Strength: 500Vdc for 1 minute
- Operating temp. range: -20°C to + 80°C
- Storage temp. range: -55°C to + 100°C

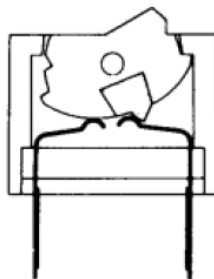
Material

- Actuator: Polybutylene terephthalate
- Cover: PBT glass filled
- Base: PBT glass filled
- Terminals / Contacts: Phosphor bronze with gold plate on nickel barrier
- Terminal Seal: Epoxy Resin
- Cover/ Base Joint: Ultrasonically Welded

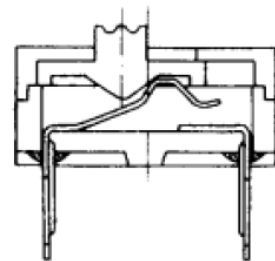
Piano-key Switch ★



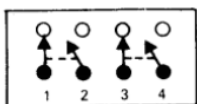
Rocker Switch



Slide Switch



Circuit Example: NP Type *



Circuit Example: DNP -1 Type

