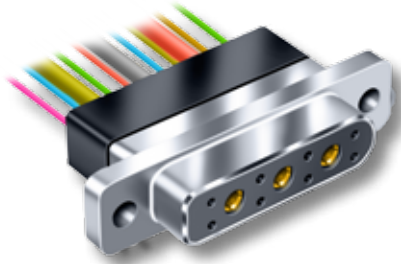




Combo Pre-Wired Micro-D for High Power Applications



GMPMT-D113P with (6) #24 pins and (3) 2mm. sockets

13 Amp Current Rating—Combo Micro-D's combine the size and weight advantages of a Micro -D connector with the added ability to handle higher power needs.

Pre-Wired And Potted with Epoxy—Gold plated power contacts accommodate up to #16 AWG stranded wire. Signal contacts accept up to #24 AWG wire.

Mil Spec Performance—Glenair combo Micro-D connectors comply with the requirements of MIL-DTL-83513 and feature excellent resistance to high temperatures, shock and vibration.

HOW TO ORDER PRE-WIRED MICRO-D POWER CONNECTORS

Series	Shell Finish	Shell Size and Insert Layout	Cable Entry Style	Wire Gage for #24 Contacts (AWG)	Wire Gage for #16 Contacts (AWG)	Wire Type	Wire Color	Wire Length mm	Hardware			
GMPM	1 - Cadmium	B112P	T - Top Entry	4 - #24	16	K - M22759/11 600 Vrms Teflon® (TFE)	1 - White Wire	460 Wire length in millimeters, rounded up to the nearest 10 mm.	B P M M1 S S1 L K F R H			
	2 - Nickel	B112R		6 - #26			18			J - M22759/33 600 Vrms Modified Cross-Linked Tefze® (ETFE)	2 - Yellow	
	4 - Black Anodize	D112P		8 - #28							20	7 - Ten Color Repeating
	5 - Gold	D112R		0 - #30	Omit for D112 and B112 layouts containing power contacts only.		E - NEMA HP3-EB 600 Vrms Type E M16878/4 (TFE)			#16 wire is always white. Wire colors apply to the signal wires only.		
	6 - Chem Film	D113P		3 - Passivated							G101P G101R G103P G103R G111P G111R	F - NEMA HP3-ETB Type ET M16878/6 250Vrms
	Stainless Steel Shell	E113P										
		E113R				G103P G103R G111P G111R						
	Stainless Steel Shell	G101P					G103P G103R G111P G111R					
		Stainless Steel Shell				G101R				G103P G103R G111P G111R		
	Stainless Steel Shell					G103P	G103P G103R G111P G111R					
		Stainless Steel Shell		G103R	G103P G103R G111P G111R							
	Stainless Steel Shell			G111P		G103P G103R G111P G111R						
		Stainless Steel Shell		G111R	G103P G103R G111P G111R							

Sample Part Number

GMPM	2 -	B112P	T	-	18	K	7 -	460	B
------	-----	-------	---	---	----	---	-----	-----	---

MOUNTING HARDWARE

B	P	M	M1	S	S1	L	K	F	R	H
Thru-Hole	Jackpost	Hex Head Jackscrew	Hex Head Jackscrew, Extended	Slot Head Jackscrew	Slot Head Jackscrew, Extended	Hex Head Jackscrew Non-Removable	Slot Head Jackscrew Non-Removable Extended	Float Mount For Front Panel Mounting	Float Mount For Rear Panel Mounting	Threaded Insert

Combo Pre-Wired Micro-D for High Power Applications



Micro-D
Combo

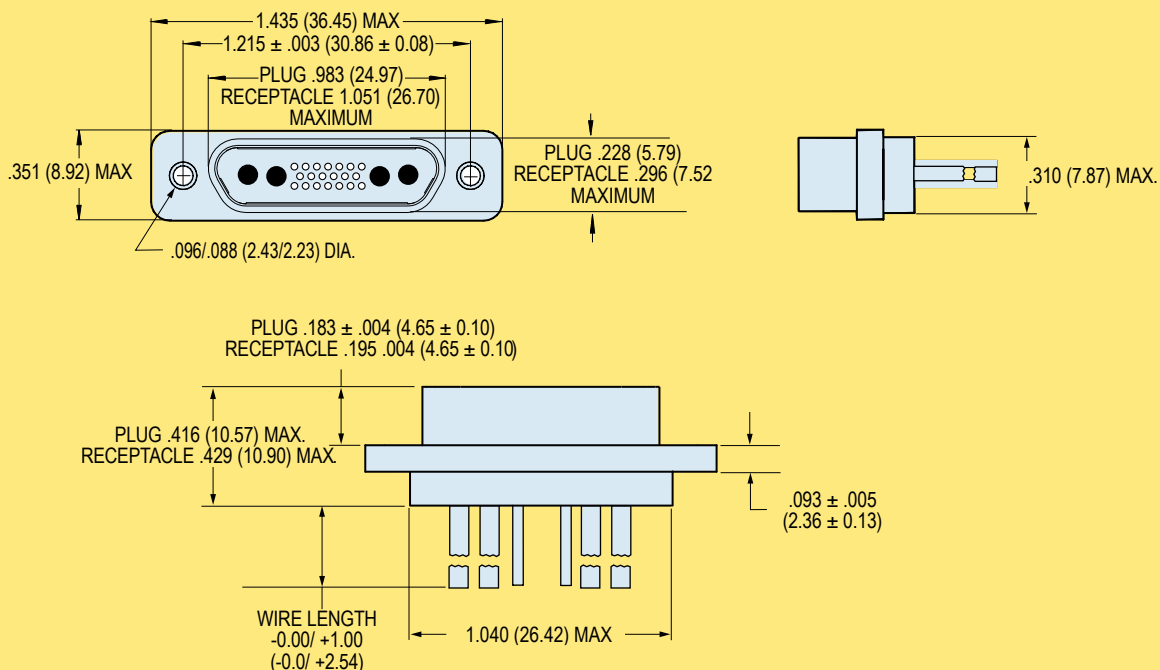
PERFORMANCE SPECIFICATIONS

Current Rating	3 AMP Signal Contacts 13 AMP .079" (2mm) Power Contacts
Dielectric Withstanding Voltage	600 VAC Sea Level 150 VAC 70,000 Feet
Insulation Resistance	5000 Megohms Minimum
Contact Resistance	8 Milliohms Maximum
Low Level Contact Resistance	32 Milliohms Max. Signal Contacts
Magnetic Permeability	2 μ Maximum
Operating Temperature	-55° C. to +150° C.
Shock	50 g.
Vibration	20 g.
Outgassing	Meets NASA Outgassing Requirements
Mating Force	(10 Ounces) X (# of Contacts)

MATERIALS AND FINISHES

Connector Shell	Aluminum Alloy 6061. See Ordering Info for Plating Options.
Insulator	Liquid Crystal Polymer (LCP)
Interfacial Seal	Fluorosilicone Rubber, Blue
Pin Contact, TwistPin	Copper Alloy with 50 Microinches Gold over Nickel Plating
Socket Contact	Copper Alloy with 50 Microinches Gold Over Nickel Plating
Pin Contact, 2mm. Power	Brass With 50 Microinches Gold Over Nickel Plating
Skt. Contact, 2mm. Power	Beryllium Copper With 50 Microinches Gold Over Nickel Plating
Hardware	300 Series Stainless Steel
PCB Terminals	Gold-Plated Copper Alloy, Solder Dipped
Encapsulant	Epoxy Resin Hysol EE4215

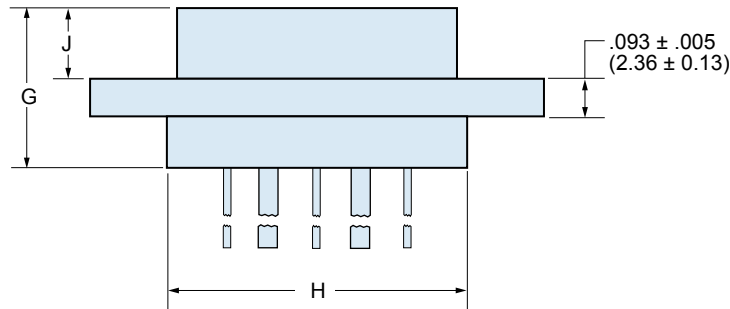
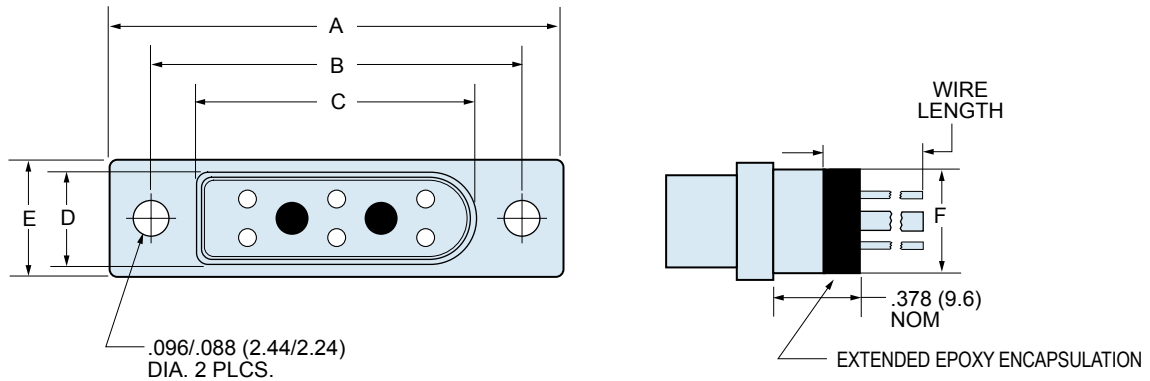
DIMENSIONS FOR SHELL SIZE G CONNECTORS



Dimensions for Shell Size G Connectors
Layouts G101, G103, G111



Combo Micro-D for High Power Applications



Dimensions for Shell Size B, D, AND E Connectors
Layouts B112, D112, D113, and E113

COMBO PRE-WIRED CONNECTOR DIMENSIONS

Layout	A Max.		B		C Max.		D Max.		E Max.		F Max.		G Max.		H Max.		J Max.	
	In.	mm.	In. ± .003	mm. ± 0.08	In.	mm.	In.	mm.	In.	mm.	In.	mm.	In.	mm.	In.	mm.	In.	mm.
B112P	.935	23.75	.715	18.16	.481	12.21	.242	6.15	.315	8.00	.270	6.86	.416	10.57	.550	13.97	.184	4.68
B112R	.935	23.75	.715	18.16	.547	13.92	.315	8.00	.315	8.00	.270	6.86	.429	10.90	.550	13.97	.197	5.01
D112P	1.185	30.01	.965	24.51	.731	18.56	.242	6.15	.315	8.00	.270	6.86	.416	10.57	.800	20.32	.184	4.68
D112R	1.185	30.01	.965	24.51	.798	20.27	.315	8.00	.315	8.00	.270	6.86	.429	10.90	.800	20.32	.197	5.01
D113P	1.185	30.01	.965	24.51	.731	18.56	.242	6.15	.315	8.00	.270	6.86	.416	10.57	.800	20.32	.184	4.68
D113R	1.185	30.01	.965	24.51	.798	20.27	.315	8.00	.315	8.00	.270	6.86	.429	10.90	.800	20.32	.197	5.01
E113P	1.335	33.91	1.115	28.32	.881	22.37	.242	6.15	.315	8.00	.270	6.86	.416	10.57	.950	24.13	.184	4.68
E113R	1.335	33.91	1.115	28.32	.948	24.08	.315	8.00	.315	8.00	.270	6.86	.429	10.90	.950	24.13	.197	5.01