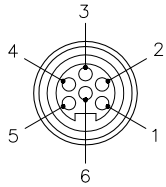


MALE END VIEW

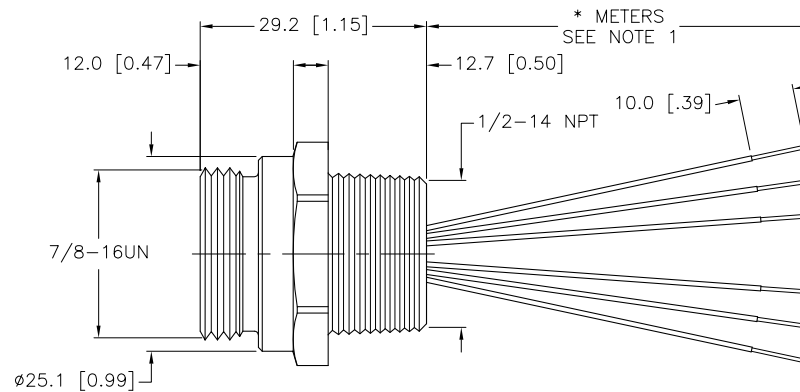
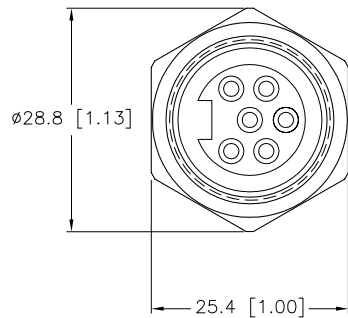


- 1 = GREEN
- 2 = WHITE
- 3 = BLUE
- 4 = GRAY
- 5 = YELLOW
- 6 = BROWN



SPECIFICATIONS

|                                |                                   |
|--------------------------------|-----------------------------------|
| CONTACT CARRIER MATERIAL/COLOR | TPU/BLACK                         |
| CONTACT MATERIAL/PLATING       | BRASS/GOLD                        |
| HOUSING MATERIAL/COLOR         | BRASS/NICKEL                      |
| RATED CURRENT [A]              | 8.0 A                             |
| RATED VOLTAGE [V]              | 600 V                             |
| CONDUCTOR INSULATION MATERIAL  | PVC                               |
| NUMBERS OF CONDUCTORS [AWG]    | 6x18 AWG                          |
| TEMPERATURE RATING             | -40°C to +105°C (-40°F to +221°F) |
| PROTECTION CLASS               | MEETS NEMA 1,3,4,6P AND IEC IP67  |



| CABLE LENGTH | TOLERANCE   |
|--------------|---|
| ALL LENGTHS  | + 4% (OR 50mm) OF LENGTH<br>- 0% (OR 0mm) OF LENGTH<br>WHICHEVER IS GREATER |
| STRIP LENGTH | TOLERANCE   |
| 0-7mm        | ±0.5mm  |
| 8-29mm       | ±1.0mm  |
| 30-49mm      | ±2.0mm  |
| 50-69mm      | ±3.0mm  |
| 70-100mm     | ±4.0mm  |
| OVER 100mm   | ±5.0mm  |

NOTES:

1. "\*" INDICATES LEAD LENGTH IN METERS. CONTACT TURCK TO ORDER SPECIFIC LENGTHS.

SOURCE DRAWING - FOR REFERENCE ONLY

|   |   |  |               |   |  |
|---|---|--|---------------|---|--|
| RELATED DOCUMENTS<br>1.<br>2.<br>3.<br>4. | 3RD ANGLE PROJECTION<br>  | THIS DRAWING IS CONFIDENTIAL AND THE PROPERTY OF TURCK INC. USE OF THIS DOCUMENT WITHOUT WRITTEN PERMISSION IS PROHIBITED. |               | 3000 CAMPUS DRIVE<br>MINNEAPOLIS, MN 55441<br>1-800-544-7769<br>(763) 553-7300<br>(763) 553-0708 fax<br>turck.com |  |
|   |   | DRFT RWC   | DATE 03/25/08 | DESCRIPTION<br>RSF 61-*M/NPT  |  |
| MATERIAL<br>SEE SPECIFICATIONS            | ALL DIMENSIONS DISPLAYED ON THIS DRAWING ARE FOR REFERENCE ONLY | DSGN   | SCALE 1=1.0   | IDENTIFICATION NO.  |  |
| FINISH<br>SEE SPECIFICATIONS              |   | UNIT OF MEASUREMENT<br><b>MILLIMETER [ INCH ]</b>  |               | REV<br>C  |  |
| CONTACT TURCK FOR MORE INFORMATION        |   | DO NOT SCALE THIS DRAWING  |               | FILE: 777001705   |  |

|     |                             |     |          |         |
|-----|-----------------------------|-----|----------|---------|
| C   | REMOVE LONG PIN DESIGNATION | RDS | 08/05/11 | 35979   |
| REV | DESCRIPTION                 | BY  | DATE     | ECO NO. |