



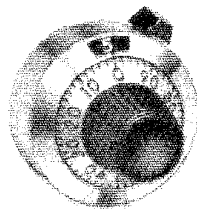
PRECISION MULTIDIALS®

7/8 INCH
DIAMETER
TURNS-COUNTING
DIAL

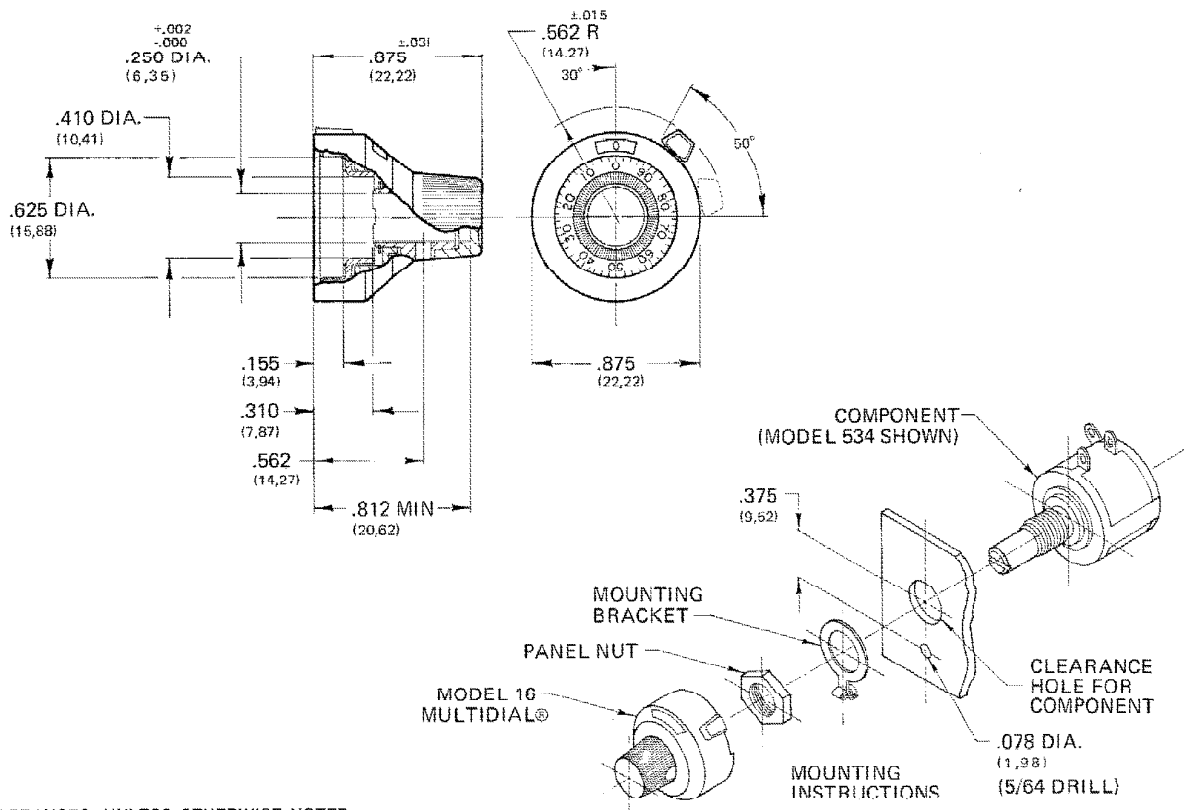
MODEL 16

- LOW COST ▪ LARGE, EASY TO READ NUMERALS ▪ FIRM POSITIVE BRAKING ACTION
- BRAKE LEVER ADJUSTMENT FOR HIGHER TORQUE ▪ ZERO BACKLASH MOUNTING
- PRECISION MECHANISM WITH QUALITY FEEL ▪ ATTRACTIVE INDUSTRY ACCEPTED APPEARANCE

ACTUAL SIZE



MODEL 16
7/8 Inch Diameter



TOLERANCES: UNLESS OTHERWISE NOTED.
DECIMALS $\pm .005$ ANGLES $\pm 2^\circ$
BASIC DIMENSIONS ARE IN INCHES
MILLIMETER DIMENSIONS IN PARENTHESES

® Multidial is a Registered Trademark

MODEL 16

PRECISION MULTIDIALS

SPECIFICATIONS

<p>READOUT AND OPERATION Unit shall register a total count of 15 turns The number in the window (0 thru 14) indicates completed number of turns of the drive sleeve. Graduated circular dial indicates the percent of a partial turn of the drive sleeve</p> <p>TRANSFER POINT The number in center of window shall change as graduated dial rotates between 94 and 0.</p> <p>ROTATION Readout shall increase with clockwise and decrease with counterclockwise rotation.</p> <p>BRAKE LEVER OPERATION: 1st Position (15° movement of Brake Lever) operates a high torque system for fine adjustment; 2nd Position (15° additional movement of Brake Lever) actuates brake.</p> <p>ACCURACY Backlash shall be zero between graduated dial and drive sleeve.</p>	<p>MOUNTING Install mounting bracket between panel and panel nut. Multidial shall mount directly to shaft with No. 2-56 spline socket set screw, located adjacent to No. 50 on graduated dial.</p> <p>NUMERAL SIZE 0.075 high</p> <p>GRADUATION SIZE Numeral graduations .045 long (1,14) intermediate graduations .030 long (0,76)</p> <p>FINISH Exposed metal parts: Brushed metal finish Turning knob and brake lever knob: Black plastic Numerals: Graduated Dial—Black Turns Counter—White on Black Background.</p> <p>WEIGHT 0.7 oz. max. (19,84 gm)</p>
--	---

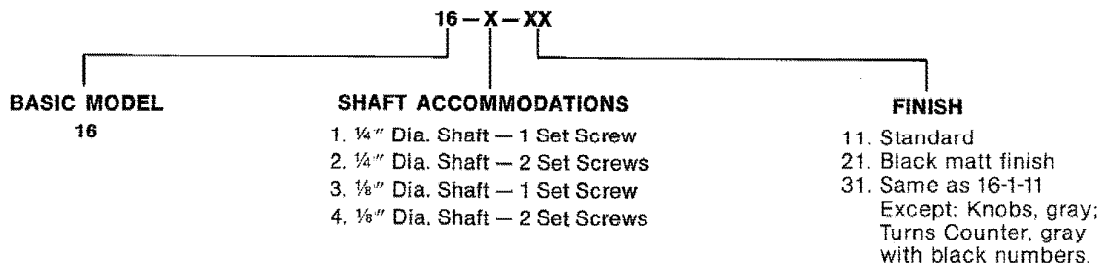
REFERENCE CHART FOR COMPLETE LINE OF MULTIDIALS

MODEL	11	15 18-1-11	15-2-11	16	21
Number of Turns	11	10	100	15	15
Minor Scale Division	1/50 turn	1/500 turn	1/500 turn	1/50 turn	1/100 turn
Shaft Bore inches (mm)	.250 (6,35)*	.250 (6,35)*	.250 (6,35)*	.250 (6,35)*	.250 (6,35)*
Finish	Satin Chrome**	Satin Chrome	Satin Chrome	Clear Anodize	Satin Chrome**
Body Size inches (mm)	1.000 dia. (25,40)	1.000 (25,40) 1.750 (44,45) h	1.000 (25,40) 1.750 (44,45) h	.875 dia (22,22)	1.812 dia (46,04)
Depth inches (mm)	.875 (22,23)	1.000 (25,40)	1.000 (25,40)	.875 (22,22)	1.000 (25,40)
Weight ounces (grams)	0.7 (19,84)	1.6 (45,40)	1.6 (45,40)	0.7 (19,84)	3.0 (85,05)

*Accommodations for 1/8" diameter shaft available.
**Available in black chrome and brushed chrome finishes.

HOW TO ORDER THE MODEL 16

The Model 16 can be ordered from this specification sheet by use of the following ordering code. The part number consists of three groups of digits. The first group is the Spectrol model number. The second group describes the shaft diameter with which the dial is to be used. The third group describes the exterior finish.



SPECTROL ELECTRONICS GROUP



Spectrol Reliance Ltd.
Drakes Way
Swindon, Wiltshire, England
Swindon 21351 • TELEX: 44692

Spectrol Electronics Corporation
17070 E. Gale Ave., P.O. Box 1220
City of Industry, Calif. 91749, U.S.A.
(213) 964-6565 • TWX (910) 584-1314

SP Elettronica spa
Via Carlo Pisacane 7
20016 Pero (Milan) Italy
35 30 241 • TELEX: 330091