

**PLEASE CHECK WWW.MOLEX.COM FOR LATEST PART INFORMATION**

**Part Number:** [87832-5222](#)

**Status:** **Active**

**Overview:** [Milli-Grid™ Connector System](#)

**Description:** Milli-Grid™ Header, Surface Mount, Vertical, Shrouded, Lead-Free, 6 Circuits, 0.38µm Gold (Au) Plating, with Pick-and-Place Cap, with Centre Locking Window, without Side Locking Window and Centre Polarization Slot, with PCB L

**Documents:**

[3D Model](#)

[Drawing \(PDF\)](#)

[Product Specification PS-87831-027 \(PDF\)](#)

[RoHS Certificate of Compliance \(PDF\)](#)

**Agency Certification**

CSA LR19980  
UL E29179

**General**

Product Family PCB Headers  
Series [87832](#)  
Application Signal, Wire-to-Board  
Comments With Cap|Contact Molex for application in automotive industry  
Overview [Milli-Grid™ Connector System](#)  
Product Name Milli-Grid™  
UPC 822348274628

**Physical**

Breakaway No  
Circuits (Loaded) 6  
Circuits (maximum) 6  
Color - Resin Black  
Durability (mating cycles max) 100  
First Mate / Last Break No  
Flammability 94V-0  
Glow-Wire Compliant No  
Guide to Mating Part No  
Keying to Mating Part Yes  
Lock to Mating Part Yes  
Material - Metal Phosphor Bronze  
Material - Plating Mating Gold  
Material - Plating Termination Tin  
Material - Resin Nylon  
Net Weight 0.300/g  
Number of Rows 2  
Orientation Vertical  
PCB Locator No  
PCB Retention None  
Packaging Type Embossed Tape on Reel  
Pitch - Mating Interface 2.00mm  
Pitch - Termination Interface 2.00mm  
Plating min - Mating 0.381µm  
Plating min - Termination 1.905µm  
Polarized to PCB No  
Robotic Placement Pick and Place Cap  
Shrouded Fully  
Stackable No  
Surface Mount Compatible (SMC) Yes

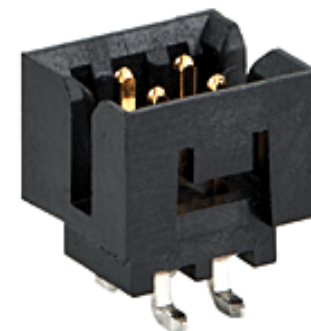


image - Reference only

Series

**EU RoHS**

**ELV and RoHS Compliant**

**REACH SVHC**

Not Reviewed

**Low-Halogen Status**

**Not Low-Halogen**

**China RoHS**



**Need more information on product environmental compliance?**

Email [productcompliance@molex.com](mailto:productcompliance@molex.com)  
For a multiple part number RoHS Certificate of Compliance, [click here](#)

Please visit the [Contact Us](#) section for any non-product compliance questions.

**Search Parts in this Series**

[87832Series](#)

**Mates With**

[50394](#) Wire-to-Board Terminals, [51110](#) Wire-to-Board Crimp Housing, [87568](#) Wire-to-Board IDT Housings, [79107](#) Board-to-Board Top Entry Through Hole Receptacle, [79108](#) Board-to-Board FFC/FPC Top Entry Through Hole Receptacle, [79109](#) Board-to-Board Surface Mount PCB Receptacle

Temperature Range - Operating	-55°C to +105°C
Termination Interface: Style	Surface Mount

### **Electrical**

Current - Maximum per Contact	2A
Voltage - Maximum	125V

### **Solder Process Data**

Duration at Max. Process Temperature (seconds)	10
Lead-free Process Capability	Reflow Capable (SMT only)
Max. Cycles at Max. Process Temperature	1
Process Temperature max. C	260

### **Material Info**

### **Reference - Drawing Numbers**

Product Specification	PS-87831-027
Sales Drawing	SD-87832-006

This document was generated on 01/19/2015

**PLEASE CHECK [WWW.MOLEX.COM](http://WWW.MOLEX.COM) FOR LATEST PART INFORMATION**