

flare



Overall width 6.2 mm
Screw or spring clamp terminal
can be selected
Dimensions (mm): W x H x D
6.2 x 89 x 70

250 V AC 300 V DC 6 A
1 C
Approvals: , CSA

48 V DC 20 A
1 C
Approvals: , CSA

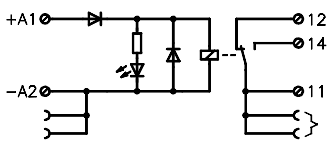
	Screw terminal	Spring-clamp	Box Qty	Screw terminal	Spring-clamp	Box Qty
12 V DC		80.010.4106.0	10			
24 V DC	80.010.4000.0	80.010.4100.0	10			
12 V AC DC						
24 V AC DC				80.010.4005.0	80.010.4105.0	10
115 V AC		80.010.4131.0	10			
230 V AC		80.010.4141.0	10			
		464 465			464 465	
C						
Operating voltage	UB +25 %/-20 %			UB +25 %/-20 %		
Nominal input current	ca. 14 mA			ca. 14 mA		
Nominal input capacity	ca. 0.35 W			ca. 0.35 W		
Holding current at 20 °C	> 1,2 mA			> 1,2 mA		
Connectable via plug-in jumper	Up to 50 modules			Up to 50 modules		
Status display	LED Green			LED Green		
Maximum switching voltage	250 V AC / 300 V DC			48 V DC		
Maximum switching current	6 A AC / 2 A DC			20 mA		
Maximum switching capacity	1500 VA / 48 W			1 W		
Maximum starting current	10 A; 4 sec.					
Pickup/dropout delay	8 ms / 10 ms			8 ms / 10 ms		
Chatter time	2 ms			2 ms		
Maximum switching frequency	20 Hz			20 Hz		
Contact material	AgSnO ₂			AgSnO ₂ + 3µ Au		
Minimum switchable voltage	12 V			5 V		
Minimum switchable current	5 mA			1 mA		
Mechanical endurance	2 x 10 ⁷			2 x 10 ⁷		
Electrical endurance 24V DC / 2 A	6 x 10 ⁵			6 x 10 ⁵		
Electrical endurance 230V AC / 6 A	8 x 10 ⁴			8 x 10 ⁴		
Rated voltage						
Isolation voltage of input/output	4 kV _{eff}			4 kV _{eff}		
Overvoltage category	III (according to HD 625.1S1)			III (according to HD 625.1S1)		
Degree of pollution	2 (according to HD 625.1S1)			2 (according to HD 625.1S1)		
Ambient temperature	0 °C...+50 °C			0 °C...+50 °C		
Storage temperature	-40 °C...+55 °C			-40 °C...+55 °C		
Protection type/mounting rail	IP 20 / TS35			IP 20 / TS35		
Norms/specifications	VDE 0160; VDE 0106 T101			VDE 0160; VDE 0106 T101		
Emitted interference/interference immunity	EN 61000-6-3; EN 61000-6-2			EN 61000-6-3; EN 61000-6-2		
Wire range of screw terminal/spring clamp terminal						
finely stranded	0.14 mm ² – 1.5 mm ²			0.14 mm ² – 1.5 mm ²		
single core	0.5 mm ² – 2.5 mm ²			0.5 mm ² – 2.5 mm ²		
CSA EX approval	Class I, Division 2, Groups A, B, C and D			Class I, Division 2, Groups A, B, C and D		
A						
Plug-in jumper (U _{max} = 50 V, I _{max} = 2 A)	Z8.000.0200.8			Z8.000.0200.8		
8 digit marker tag, unmarked, 60 off	Z4.242.5153.0			Z4.242.5153.0		
Comb for potential distribution, red/blue	Z8.000.0202.3 / Z8.000.0202.4			Z8.000.0202.3 / Z8.000.0202.4		
End caps for comb red/blue	Z8.000.0202.1 / Z8.000.0202.2			Z8.000.0202.1 / Z8.000.0202.2		

Relay modules

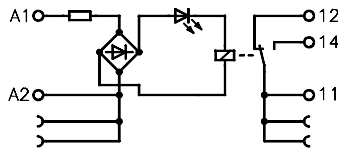
flare

Wiring diagrams: flare – Mechanical relay modules

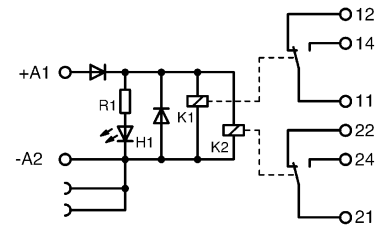
12-V-/24-V-Relay 1 Changeover contact



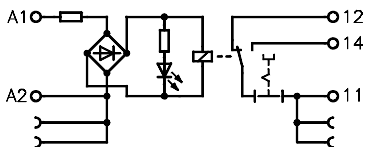
110-V-/230-V-Relay 1 Changeover contact



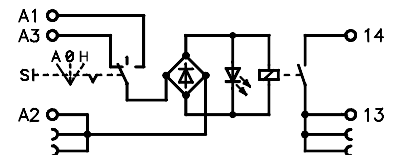
24-V-Relay 2 Changeover contact



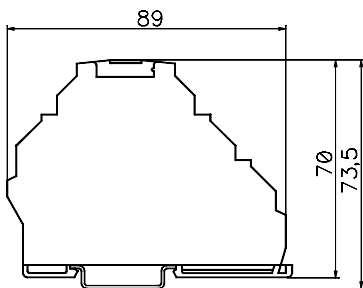
Knife-edge disconnect terminal relay



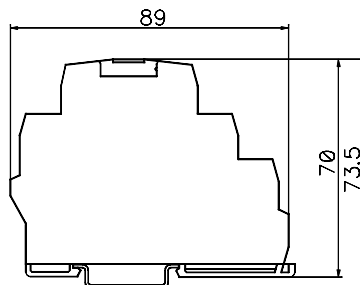
Hand-0-Auto-Relay



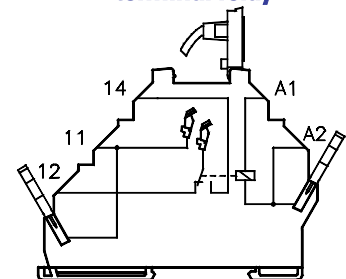
Housing with spring clamp terminals



Housing with screw terminals



Connection of Knife-edge disconnect terminal relay

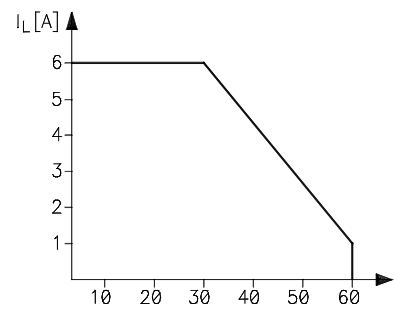
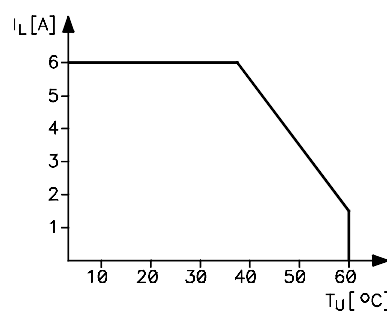
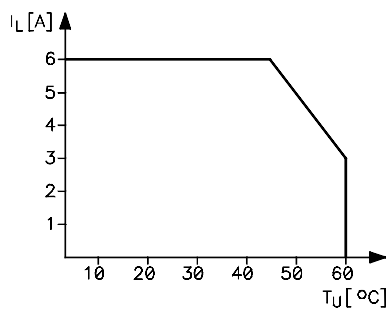


Derating: flare – Mechanical relay modules

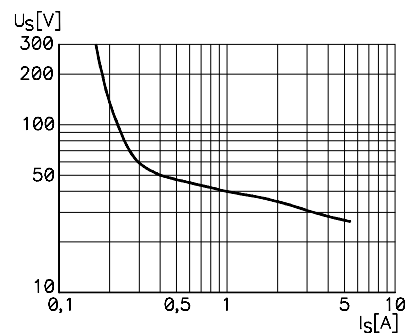
24-V-Relay 1/2 Changeover contact
 12-V-Relay 1 Changeover contact
 Knife-edge disconnect terminal relay
 HAND-0-AUTO-Relay
 Time relay

110-V-Relay 1 Changeover contact

230 V-Relay 1 Changeover contact



Derating curve for d.c. loads



Switching capacity according to 60947-5.1

	AC 12	AC 15	DC 13
V	A	A	A
24	6	3	1
110	6	3	0.2
230	6	3	0.1