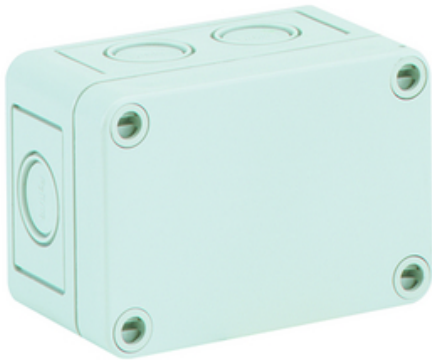


## Product

### TK PS 97-6-m



Empty enclosure, base and cover: polystyrene, grey, similar to RAL 7035

with metric knockouts

**Article:** TK PS 97-6-m

### Technical Data

#### Dimensions:

Width:	94 mm
Length:	65 mm
Height:	57 mm
interior height:	45 mm

#### material:

Base:	Polystyrene, grey, similar to RAL 7035
Cover:	Polystyrene, grey, similar to RAL 7035
Sealing:	Polyurethane
Cover screw:	Polyamide 6, fiber-glass reinforced

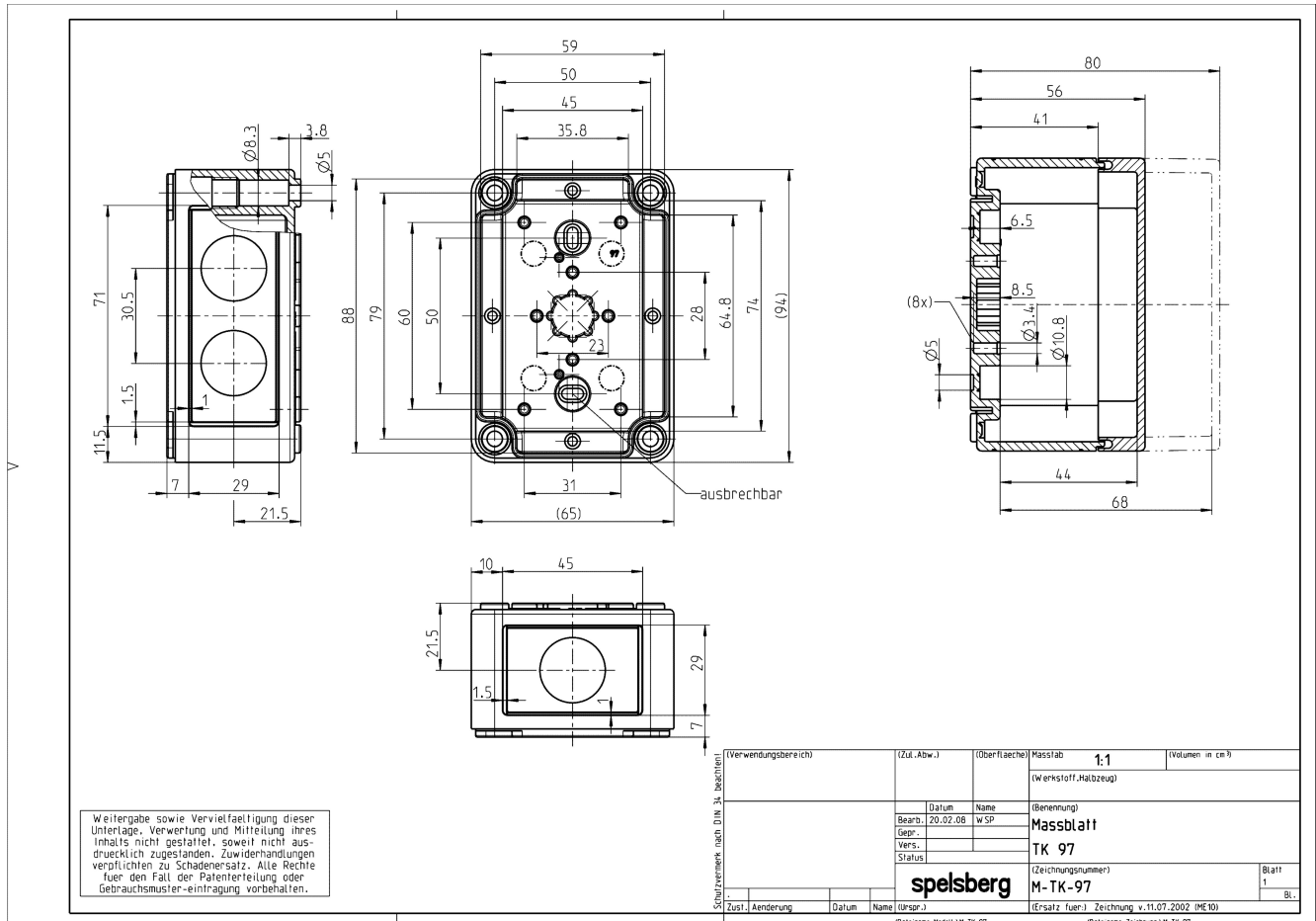
#### Properties:

Ingress protection:	IP66 - acc. EN 60529 / DIN VDE 0470-1
Ambient temperature (min.):	-25 °C
Ambient temperature (max.):	40 °C
Ambient temperature (24 h):	35 °C
Max. rel. humidity at 40° C:	50%
Max. rel. humidity at 25° C (short Therm):	{100%}
Rated insulation voltage AC:	690V
Impact resistance:	IK07 acc. DIN EN 5012 / VDE 0470 Part 100
Protection class:	II - isolate protection acc. VDE 0106 Protective insulation as per VDE 0106
Halogen-free:	√
Heavy metals-free:	√

PVC-free:	√
Silicone-free:	√
UV resistance:	-
Weatherproof:	-
Fitted for outdoor application:	-
Combustion behaviour to UL:	HB acc. UL94
Combustion behaviour to VDE:	650°C acc. VDE 0471/ EN 60695
Knockouts:	√

---

## Drawing



## Manufacturer

Günther Spelsberg GmbH + Co. KG  
 Im Gewerbepark 1  
 58579 Schalksmühle  
 +49 (0)2355/892-0  
 +49 (0)2355/892-299  
 www.spelsberg.de