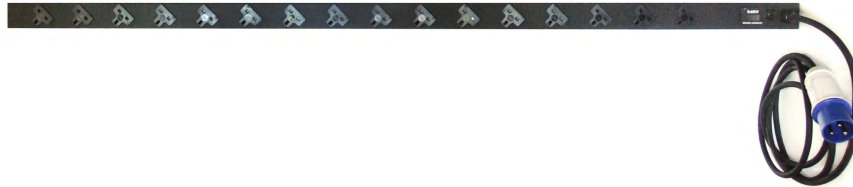




# Datasheet



## RS 811-7083

Aggregate Locally Current Metered Vertical PDU with:-

- 16 x UK BS1363 Right Hand Angled Sockets
- Built in Digital Ammeter Display
- 3 Metre Bottom Front Fed Lead
- 230V/32A Single Phase IEC60309 Plug
- Black Finish

### Specifications:

Monitoring	Current - Local Digital RMS Current Meter +/- 2% Accuracy with Full Scale 60Hz sine wave input
Monitoring Level 1	Aggregate - Total Unit Monitoring
Quantity Of Inputs	1
Voltage	230V
Amperage	32A
VA per Input (Load Capacity)	7.3kW
Frequency	50/60 Hz
Over Current Protection	None
Switch	No
Power Cable Wire Gauge	4mm <sup>2</sup> H07RN-F
Power Cable Length	3m
Plug Type	IEC60309 2P + E, 32A, 250V
Receptacle/Socket Type #1	BS1363
Quantity on Face #1	16
Style #1	Individual - Right Hand Angled
Maximum Output per Receptacle/Socket #1	13A
Voltage per Receptacle/Socket #1	230V
Heavy Steel -Black Powder Coat	Yes
Configuration	66in / 1682mm Vertical Rackmount
GE Vertical Mounting Bracket	Yes
Toolless Mounting Hardware - Center to Center Spacing	1556 mm and 1645 mm
Product Warranty	Three Year
Certification/Agency Approvals	Complies with EN 60950



Certification/Agency Approvals	RoHS Compliant
Certification/Agency Approvals	CE Marked
Chassis Dimensions (LxWxD)	1682mm x 54mm x 51mm