

## Flush-type connector - SACC-E-M12FST-4CON-M16/0,5 - 1424138

Please be informed that the data shown in this PDF Document is generated from our Online Catalog. Please find the complete data in the user's documentation. Our General Terms of Use for Downloads are valid (<http://download.phoenixcontact.com>)



### Key commercial data

Packing unit	1 pc
Weight per Piece (excluding packing)	20.0 GRM
Custom tariff number	85366990
Country of origin	Germany

### Technical data

#### Dimensions

Length of cable	0.5 m
-----------------	-------

#### Ambient conditions

Ambient temperature (operation)	-25 °C ... 85 °C
Degree of protection	IP67

#### General

Rated current at 40°C	12 A
Rated voltage	60 V
Number of positions	4
Contact resistance	≤ 3 mΩ
Insulation resistance	≥ 100 MΩ
Coding	T power
Standards/regulations	M12 connector
Signal type/category	Universal
Status display	No
Surge voltage category	III

# Flush-type connector - SACC-E-M12FST-4CON-M16/0,5 - 1424138

## Technical data

### General

Pollution degree	3
Connection method	Individual wires
Insertion/withdrawal cycles	> 100
Torque	(M12 connector)
Mounting type	Front mounting M16 x 1.5

### Material

Inflammability class according to UL 94	V0
Contact material	CuZn
Contact surface material	Au
Contact carrier material	PA
Material, knurls	CuZn alloy, nickel-plated
Sealing material	FKM

### Cable

Cable type	PP litz wire
Conductor cross section	1.5 mm <sup>2</sup>
AWG signal line	16
Wire colors	Black, brown, blue, white
Conductor material	Bare Cu litz wires
Ambient temperature (operation)	-40 °C ... 90 °C (cable, fixed installation)

## Classifications

### eCl@ss

eCl@ss 4.0	27140815
eCl@ss 4.1	27140815
eCl@ss 5.0	27143423
eCl@ss 5.1	27143423
eCl@ss 6.0	27143423
eCl@ss 7.0	27449001
eCl@ss 8.0	27449001

### ETIM

ETIM 3.0	EC002061
ETIM 4.0	EC002062
ETIM 5.0	EC002062

# Flush-type connector - SACC-E-M12FST-4CON-M16/0,5 - 1424138

## Classifications

### UNSPSC

UNSPSC 6.01	31251501
UNSPSC 7.0901	31251501
UNSPSC 11	31251501
UNSPSC 12.01	31251501
UNSPSC 13.2	31251501

## Accessories

### Accessories

#### Flat nut

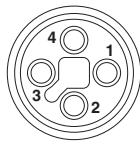
Flat nut - SACC-E-MU-M16 - 1504097



Flat nut with M16 thread

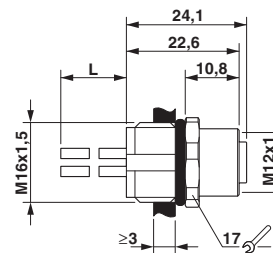
## Drawings

### Schematic diagram



Connector pin assignment of M12 socket, 4-pos., T-coded, view of socket side

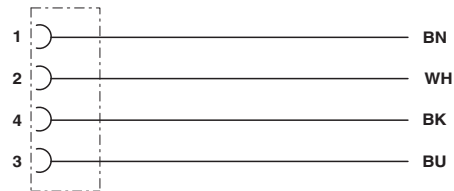
### Dimensioned drawing



M12 flush-type socket

## Flush-type connector - SACC-E-M12FST-4CON-M16/0,5 - 1424138

Circuit diagram



Contact assignment of the M12 socket