

## DRL RE 180 (907 425)

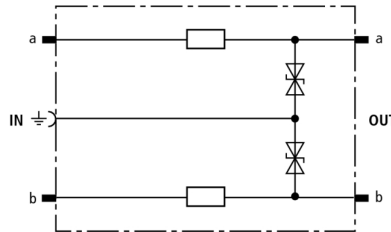
Low voltage protection level for the protection of terminal equipment

Energy-coordinated with DRL plug-in SPD block

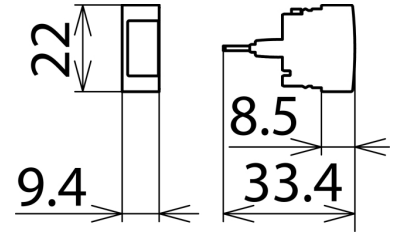
For installation in conformity with the lightning protection zones concept at the boundaries from 1 – 2 and higher



Figure without obligation



Basic circuit diagram DRL RE



Dimension drawing DRL RE

Protective plug (one pair), energy-coordinated with DRL plug-in SPD block, for use as single-stage protective device for terminal equipment with decoupling impedances. Ideally suited for signal circuits with common reference potential. Earthing via EF 10 DRL. For disconnection blocks or DRL plug-in SPD blocks only.

| Type   | DRL RE 180  |
|--|---|
| Part No.   | 907 425   |
| SPD class  | ⚡ TYPE 3 [2]  |
| Nominal voltage ( $U_N$ )  | 180 V   |
| Max. continuous operating d.c. voltage ( $U_C$ )   | 180 V   |
| Max. continuous operating a.c. voltage ( $U_C$ )   | 127 V   |
| Nominal current ( $I_L$ )  | 0.1 A   |
| D1 Total lightning impulse current (10/350 $\mu$ s) in combination with DRL 10 B... ( $I_{imp}$ )    | 5 kA  |
| D1 Lightning impulse current (10/350 $\mu$ s) per line in combination with DRL 10 B... ( $I_{imp}$ ) | 2.5 kA  |
| C2 Total nominal discharge current (8/20 $\mu$ s) in combination with DRL 10 B... ( $I_n$ )          | 10 kA   |
| C2 Nominal discharge current (8/20 $\mu$ s) per line in combination with DRL 10 B... ( $I_n$ )       | 5 kA  |
| Voltage protection level line-PG for $I_{imp}$ D1 in combination with DRL 10 B... ( $U_p$ )          | $\leq 280$ V  |
| Voltage protection level line-line at 1 kV/ $\mu$ s C3 ( $U_p$ )                                     | $\leq 500$ V  |
| Voltage protection level line-PG at 1 kV/ $\mu$ s C3 ( $U_p$ )                                       | $\leq 270$ V  |
| Series impedance per line  | 4.7 ohms  |
| Cut-off frequency line-PG ( $f_c$ )  | 42 MHz  |
| Capacitance line-line (C)  | $\leq 50$ pF  |
| Capacitance line-PG (C)  | $\leq 80$ pF  |
| Operating temperature range  | -40°C...+80°C   |
| Degree of protection   | IP 20 (when plugged in)                                       |
| Plugs into   | LSA disconnection block 2/10 or DRL 10 B... plug-in SPD block |
| Earthing via   | earthing frame  |
| Enclosure material   | polyamide PA 6.6  |
| Colour   | yellow  |
| Test standards   | IEC 61643-21 / EN 61643-21                                    |
| Approvals  | VdS, GOST   |
| PU   | 10 pc(s)  |
| Weight   | 3,400 g   |
| Customs tariff number  | 85363010  |
| GTIN   | 4013364107656   |

We reserve the right to introduce changes in performance, configuration and technology, dimensions, weights and materials in the course of technical progress. The figures are shown without obligation.