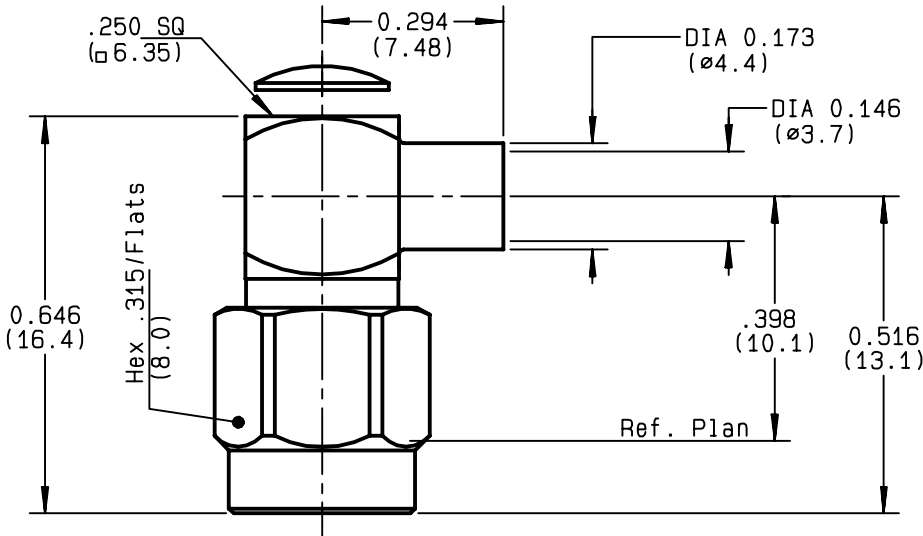


**RIGHT ANGLE PLUG SOLDER TYPE
CABLE .141**

R125.154.002
SERIES SMA



CECC 22111-803-02
QUALITE H 50 Ω



NOMINAL IMPEDANCE	50 Ω
FREQUENCY RANGE	0-12.4 GHz
TEMPERATURE RATING	-65/+105 °C
V.S.W.R	1.10 + .01 x F(GHz)Maxi
RF INSERTION LOSS	0.05 √F(GHz) dB Maxi
VOLTAGE RATING	500 Veff Maxi
DIELECTRIC WITHSTANDING VOLTAGE	1000 Veff Mini
INSULATION RESISTANCE	5000 MΩMini
HERMETIC SEAL	NA Atm.cm ³ /s
LEAKAGE (pressurized only)	NA
MECHANICAL DURABILITY	500 Cycles
WEIGHT	gr
SPECIFICATION	

CABLES : **KS 2**
RG 402

OTHERS CHARACTERISTICS

CABLE RETENTION	270 N Mini
CENTER CONTACT RETENTION	
Axial force - mating end	27 N Mini
Axial force - opposite end	27 N Mini
Torque	2.8 cm.N Mini
RECOMMENDED TORQUES	
Mating	100 cm.N
Panel nut	NA cm.N
Clamp nut	NA cm.N

CONNECTOR PARTS. MATERIALS

BODY	STAINLESS STEEL
OUTER CONTACT	
CENTER CONTACT	BRASS
INSULATOR	PTFE
GASKET	SILICONE RUBBER
OTHERS PIECES	STAINLESS STEEL

FINISH (all values are given in micrometers)

BODY	GOLD 0.5 OVER NICKEL 2
OUTER CONTACT	
CENTER CONTACT	GOLD 0.5 OVER NICKEL 2
INSULATOR	-
GASKET	-
OTHERS PIECES	PASSIVATED .

BAFFERT JM

ISSUE	CREATION DATE	FILE PART-NUMBER
9901E00	10/12/1990	



RADIALL®

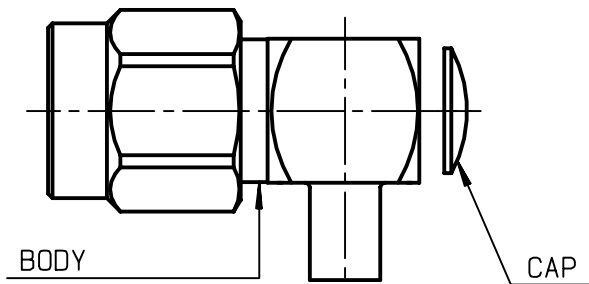
The information given here is subject to change without notice.
Design changes may be in order to improve the product .

Connect to the future



R125.154.002

ISSUE **9901E00** SERIES **SMA**



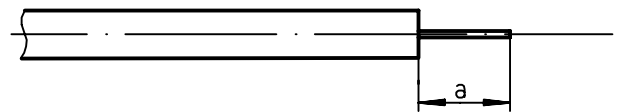
We recommend a cable thermal preconditioning before assembly.

①

Strip the cable .

Stripping tool R 282 053

Positioner R 282 067



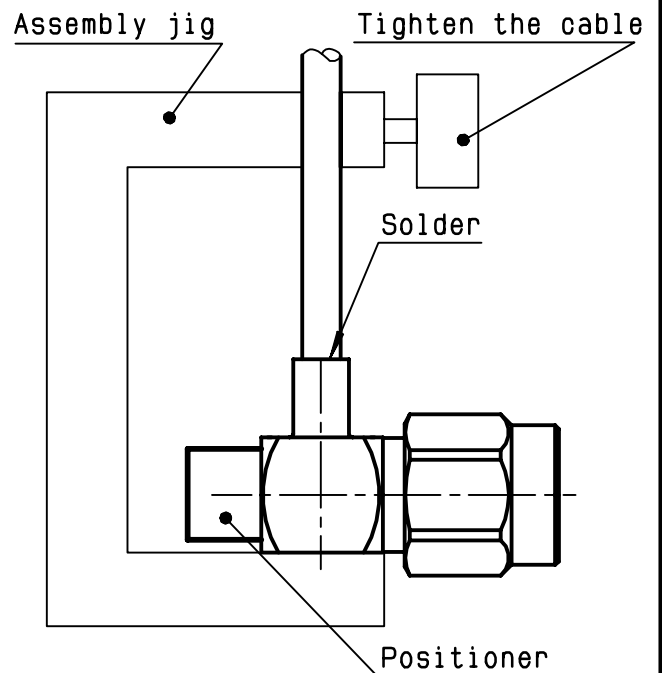
Stripping	a	b	c	d	e
inch	0.125	0	0	0	0
mm	3.17				

②

2-1 Introduce the cable into the connector body until it stops.
Place the sub assembly into the assembly jig R 282 740 (or equivalent) with positioner 730 40 025 and tighten it.

2-2 Solder the body onto the cable.

2-3 Let the assembly cool down before removing it from the jig .



③

3-1 Solder inner conductor.

3-2 Put the cap in its place.

3-3 Press cap flush or slightly below surface of body assembly.

