



Ordering number CA12087
Description 1

Family	Strada-Forward	FWHM	Asymmetric degrees
Type	Assembly	Efficiency	(simulated) 88 %
LED	3535 Ceramic (LEMWA33)	3W cd/lm	0.880
Color	Clear	Gerber File	Available
Diameter	15.4 x 19.6 mm		
Height	10.8 mm		
Style	Rectang	http://www.ledil.fi/Strada-F_Fully_Asymmetrical_Forward_Thro	
Optic Material	PMMA		
Holder Material	-		
Fastening	-		
Status	Ready		

NOTE: The typical divergence will be changed by different color, chip size and chip position tolerance. The typical total divergence is the full angle measured where the luminous intensity is half of the peak value.

D

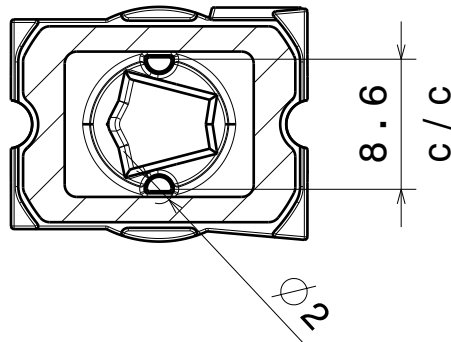
C

B

A

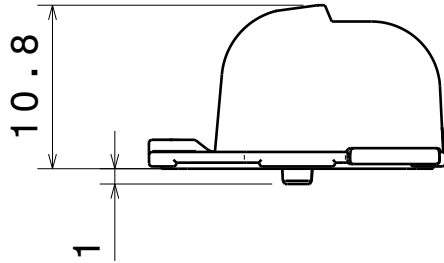
4

4



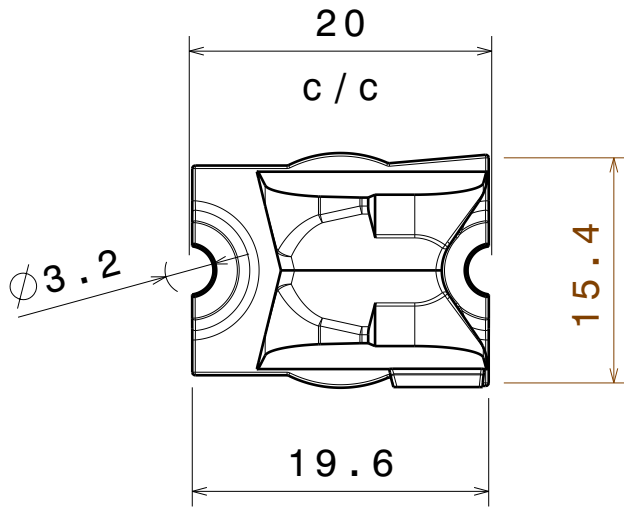
3

3



2

2



Top view
Scale: 2:1

MATERIALS
Lens: PMMA
tape: Pu foam with PSA

This drawing is our property.
It can't be reproduced
or communicated without
our written agreement.



Ledil Oy
Salorankatu 10
24240 SALO
Finland

DRAWING TITLE

Datasheet Strada-FW assy

DRAWN BY

pv

DATE

23.8.2011

CHECKED BY

ah

DATE

22.8.2011

SIZE

A4

DRAWING NUMBER

CA12087

REV

1

DESIGNED BY

hh

DATE

22.8.2011

SCALE

2:1

WEIGHT (g)

SHEET

1/1

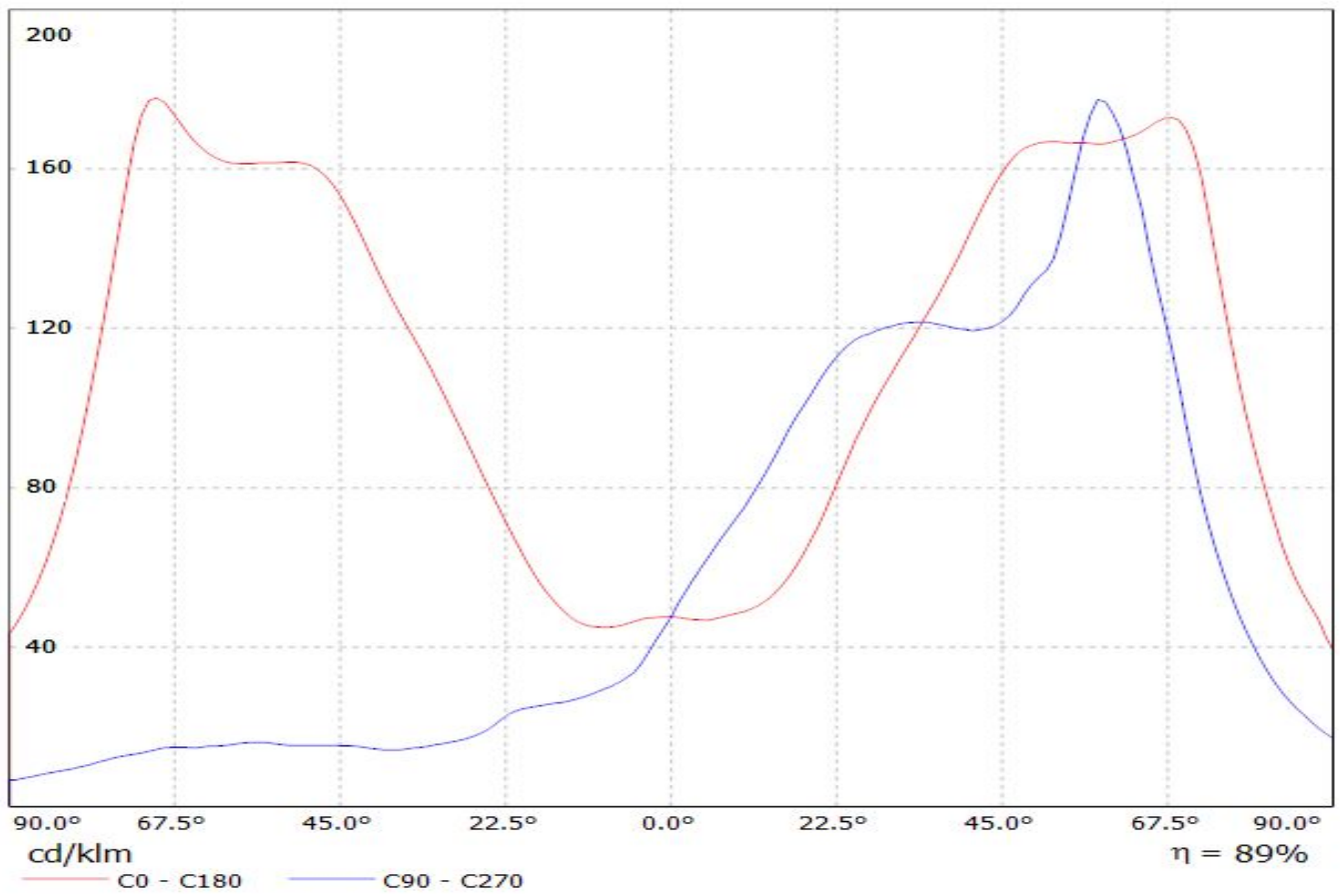
D

A

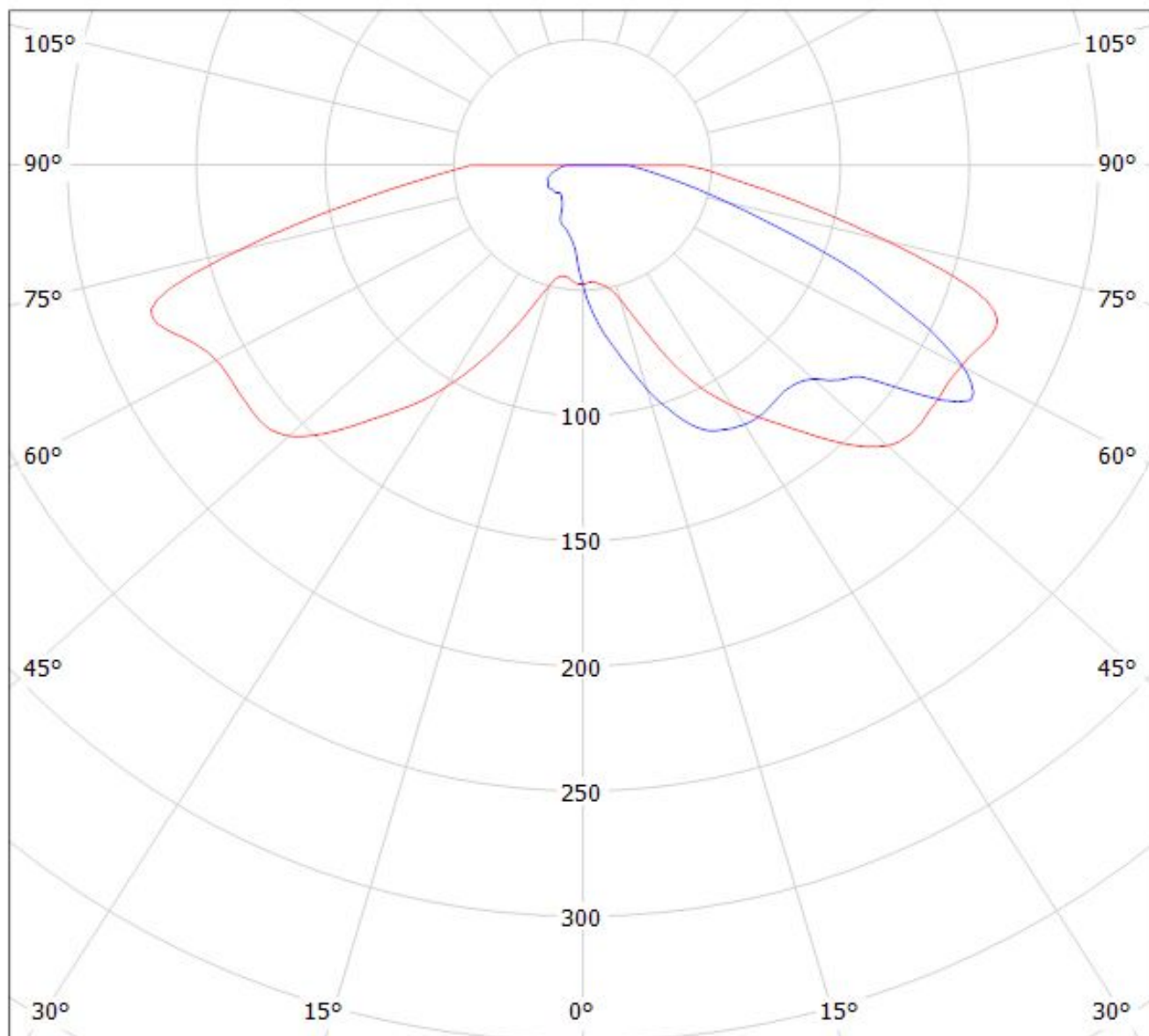
1

1

Luminaire: LEDiL Oy CA12087_STRADA-FW_(LG3535) Eff. 88,2%
Lamps: 1 x LG Ceramic 3535 PKG (95lm@250mA)



Luminaire: LEDiL Oy CA12087_STRADA-FW_(LG3535) Eff. 88,2%
Lamps: 1 x LG Ceramic 3535 PKG (95lm@250mA)



cd/klm

— C0 - C180

— C90 - C270

$\eta = 89\%$