

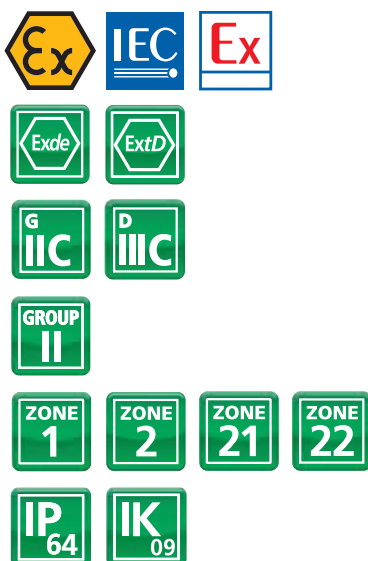


EVS-EMA Range

Emergency fluorescent fitting with automatic test



Approvals / Characteristics



Features

- Main body constructed of a GRP for high impact strength
- Battery duration 3 hours
- Automatic testing for preventive maintenance
- Clear LED for visual inspection
- Polycarbonate diffuser to resist harsh and corrosive environments
- All components mounted on hinged and removable gear tray
- Automatic switch off upon opening for safe maintenance
- Including accessories, cable gland & fixing brackets

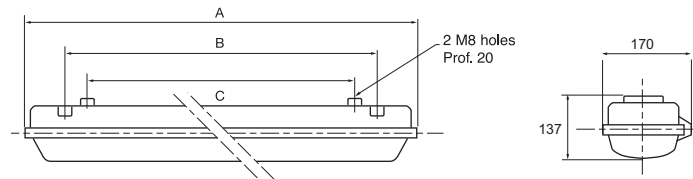
Certification & Standards

Approved to: EN60079-0, 60079-1, 60079-5, 60079-7, EN61241-1
 EC TYPE Examination Certificate:
 LCIE 11 ATEX 3065X
 IEC Ex LCI 11.0053X
 Ex II 2 G
 Ex de IIC T4 Gb for $\leq -40^{\circ}\text{C}$ to $\leq +60^{\circ}\text{C}$
 Ex de IIC T5 Gb for $\leq -40^{\circ}\text{C}$ to $\leq +35^{\circ}\text{C}$
 Ex II 2 D
 Ex tD IIIIC A21 T85°C Db IP64
 Glow wire test: 960°C EN605988-2-22
 Safe operating temperature range: -10°C to $+40^{\circ}\text{C}$

Ex Emergency lighting - EVS-EMA Range

Dimensions

Technical Specifications



Type	Wiring		Battery	Nominal Current (A)	Dimensions (mm)			Weight (kg)
	Configuration	Rating (W)			A	B	C	
EVS120EMA-A000	5 Wire Loop	1 x 18	3h	0.09	785	432	400	7.5
EVS140EMA-A000	5 Wire Loop	1 x 36	3h	0.17	1370	900	700	9.5
EVS140EMA-B000	5 Wire Through	1 x 36	3h	0.17	1370	900	700	9.5
EVS220EMA-A000	5 Wire Loop	2 x 18	3h	0.17	785	432	400	8.5
EVS240EMA-A000	5 Wire Loop	2 x 36	3h	0.33	1370	900	700	10.5
EVS240EMA-B000	5 Wire Through	2 x 36	3h	0.33	1370	900	700	10.5

Enclosure

Fibreglass reinforced polyester body
Polycarbonate diffuser
EPDM cellular gaskets

Power factor

Superior to 0.98

Cable entries

Standard: Three M20 cable entries included
Two M20 Nylon plugs and
One cable gland - ISO M20 Nylon, diameter
8-13mm for non-armoured cable

Fixing

Standard: V015 - 2 Zinc Plated Steel brackets for
ceiling mounting

Rated voltages

Standard: electronic ballast
AC/DC 220-240V, 50-60Hz
For other voltages contact Sales

Battery

Ni-Cad 6V 4Ah for 18W /
Ni-Cad 6V 7Ah for 36W battery in flameproof case
(Auto cut out of defective light)
Lumen output in emergency mode (1 tube lit): 40%
at 18W, 33% at 36W
Battery duration: 3h max 36W

Preventive maintenance - Self test

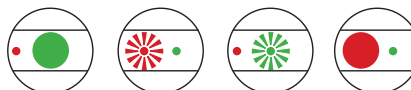
- Battery charge - daily
- Emergency lamp during 1min - weekly
- Battery charge capacity during 1hr - quarterly
- Clean system test display

Battery charge monitored by 2 LED

Terminal block

Up to 4mm² (rigid wire), 2.5mm² (flexible wire)
Lamps (order separately)

Command must be supplied with switch on line
Tube G13 bi-pin T8 Ø 26 coolwhite 4000°k



Healthy
(test OK)

Emergency or
Indicator
Lamp Fault
(must be
replaced)

Test in
Progress
(waiting end
of test)

Fault
(replace
battery)

Spares & Fixings Accessories see pages 94-99



EXB Conduit 138



Nylon Stopping
Plugs 164



XB100 Range 108



Exe Nylon Gland 166

Related Products