



SHUNT TRIP AC 210...240V,50/60HZ,  
100% ED, DC 190...330V, 5SEC ED,  
AC 190...330V,50/60HZ, 5SEC ED,  
FOR S00...S3,

### Certificates/approvals:

#### General Product Approval



CSA



UL



EG-Konf.

#### Declaration of Conformity

#### Test Certificates

[Special Test Certificate](#)

### Shipping Approval



BUREAU VERITAS



DNV



GL



LRS



PRS



RMRS

### other

[Confirmation](#)

[Declaration of Conformity](#)

[other](#)

[Environmental Confirmations](#)

### Further information:

#### Information- and Downloadcenter (Catalogs, Brochures,...)

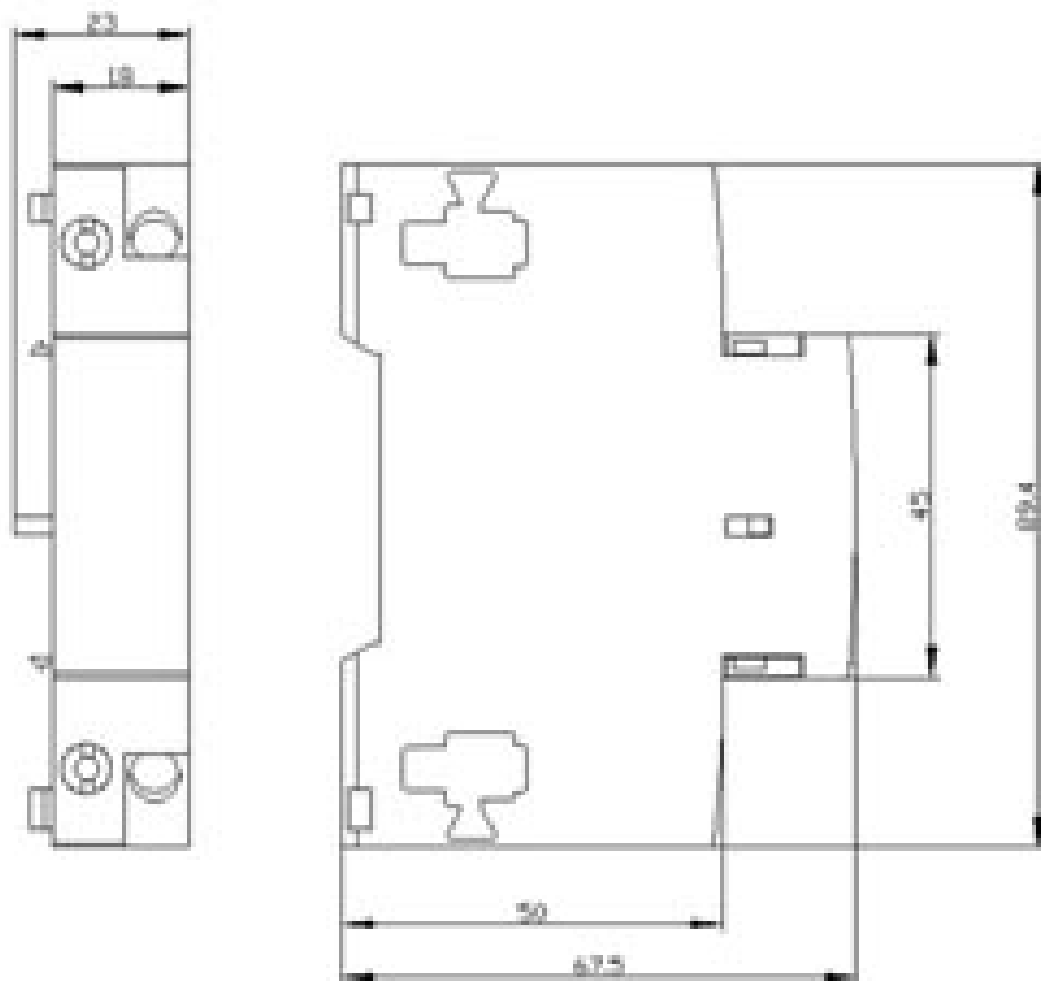
<http://www.siemens.com/industrial-controls/catalogs>

#### Industry Mall (Online ordering system)

<http://www.siemens.com/industrial-controls/mall>

#### CAX-Online-Generator

<http://www.siemens.com/cax>



last change: