

VOLTAGE RELEASE, AC 500V, 50/60 HZ, 100% ED,  
AC 500V, 50/60 HZ, 5SEC ED, DC 500V, 5SEC ED, W.  
SCREW CONNECTION; FOR CIRCUIT-BREAKERS  
3RV2



General technical data:

product brand name		SIRIUS
Product designation		shunt release
Size of the circuit-breaker		S00, S0, S2
Design of the product		<kein Wert>
Suitability for use		motor circuit breaker
Protection class IP on the front		IP20
Design of short-circuit protection		fuse
Degree of pollution		3
Insulation voltage rated value	V	690
Insulation voltage with degree of pollution 3 rated value	V	690
Ambient temperature		
• during storage	°C	-50 ... +80
• during operation	°C	-20 ... +60
Equipment marking acc. to DIN 40719 extended according to IEC 204-2 acc. to IEC 750		F
Equipment marking acc. to DIN EN 61346-2		F

Auxiliary circuit:

Number of NC contacts for auxiliary contacts instantaneous contact		0
Number of NO contacts for auxiliary contacts instantaneous contact		0
Number of NO contacts for auxiliary contacts leading contact		0
Number of CO contacts of auxiliary contacts instantaneous contact		0

#### Control circuit/ Control:

<b>Type of voltage of the control supply voltage</b>		AC
<b>Control supply voltage frequency</b>		
• 1		
— rated value		<kein Wert>
— Initial rated value	Hz	50
— Final rated value	Hz	60
• 2 rated value		<kein Wert>
<b>Control supply voltage</b>		
• 1		
— at DC		
— rated value		<kein Wert>
— Initial rated value		<kein Wert>
— Final rated value		<kein Wert>
— at AC		
— at 50 Hz rated value	V	500
— at 50 Hz Initial rated value		<kein Wert>
— at 50 Hz Final rated value		<kein Wert>
— at 60 Hz rated value	V	500
— at 60 Hz Final rated value		<kein Wert>
— at 60 Hz Initial rated value		<kein Wert>
• 2		
— at DC rated value		<kein Wert>
— at AC		
— at 50 Hz rated value		<kein Wert>
— at 60 Hz rated value		<kein Wert>

#### Installation/ mounting/ dimensions:

<b>Mounting type</b>		snap-on mounting
<b>Width</b>	mm	18.5
<b>Height</b>	mm	90
<b>Depth</b>	mm	68
<b>Required spacing with side-by-side mounting</b>		
• forwards		<kein Wert>
• Backwards		<kein Wert>

<ul style="list-style-type: none"> <li>• upwards</li> <li>• downwards</li> <li>• at the side</li> </ul>	<kein Wert>
<ul style="list-style-type: none"> <li>• forwards</li> <li>• Backwards</li> <li>• upwards</li> <li>• at the side</li> <li>• downwards</li> </ul>	<kein Wert>
<ul style="list-style-type: none"> <li>• forwards</li> <li>• Backwards</li> <li>• upwards</li> <li>• downwards</li> <li>• at the side</li> </ul>	<kein Wert>

Certificates/ approvals:

Certificate of suitability CE / UL / CSA

General Product Approval	Declaration of Conformity	Test Certificates	Shipping Approval
--------------------------	---------------------------	-------------------	-------------------



CSA



UL



EG-Konf.

[spezielle Prüfbescheinigung](#)  
n

[Typprüfbescheinigung/Werkszeugnis](#)



ABS

Shipping Approval



BUREAU VERITAS



DNV



GL



LRS



PRS



RINA

Shipping Approval	other	Railway
-------------------	-------	---------



RMRS

[Umweltbestätigung](#)



VDE

[Schwingen/Schocke](#)  
n

Further information

Information- and Downloadcenter (Catalogs, Brochures,...)  
<http://www.siemens.com/industrial-controls/catalogs>

Industry Mall (Online ordering system)  
<http://www.siemens.com/industrymall>

**Cax online generator**

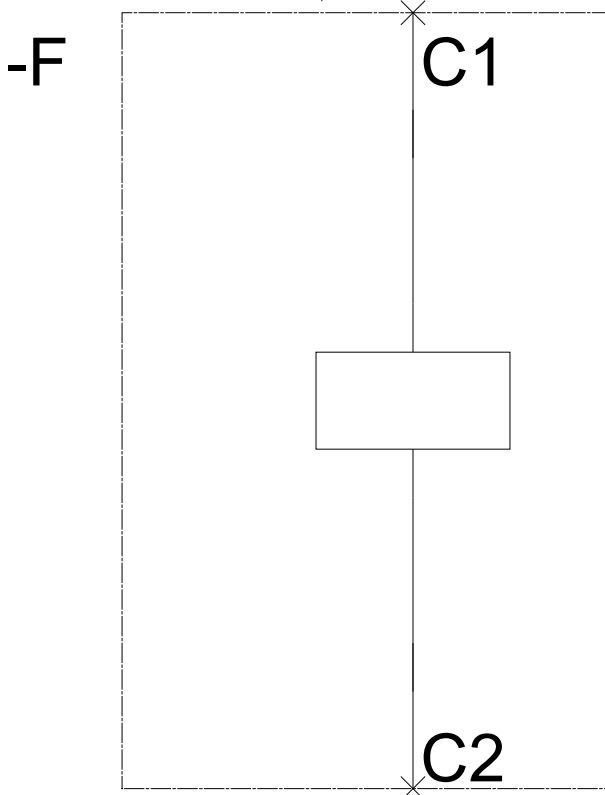
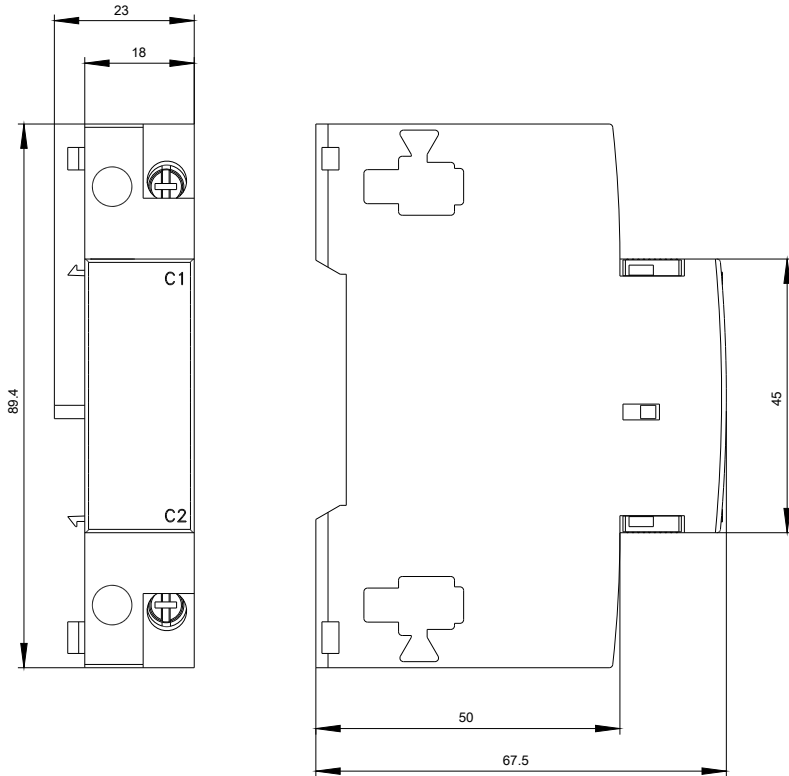
<http://support.automation.siemens.com/WW/CAXorder/default.aspx?lang=en&mfb=3RV29021DS0>

**Service&Support (Manuals, Certificates, Characteristics, FAQs,...)**

<https://support.industry.siemens.com/cs/ww/en/ps/3RV29021DS0>

**Image database (product images, 2D dimension drawings, 3D models, device circuit diagrams, EPLAN macros, ...)**

[http://www.automation.siemens.com/bilddb/cax\\_de.aspx?mfb=3RV29021DS0&lang=en](http://www.automation.siemens.com/bilddb/cax_de.aspx?mfb=3RV29021DS0&lang=en)



last modified:

07.12.2015