

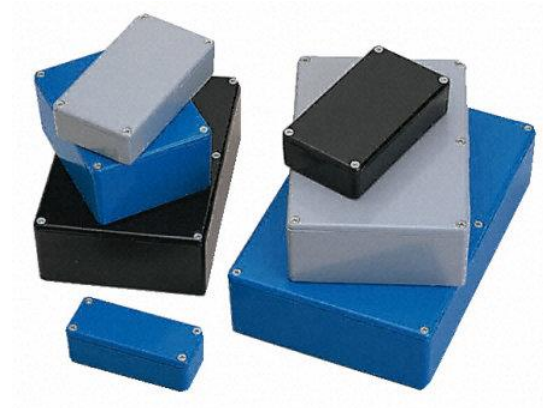


ENGLISH

Datasheet

Aluminium Enclosure, IP66, 165.8 x 127.3 x 76.3mm

RS Stock number 517-4308



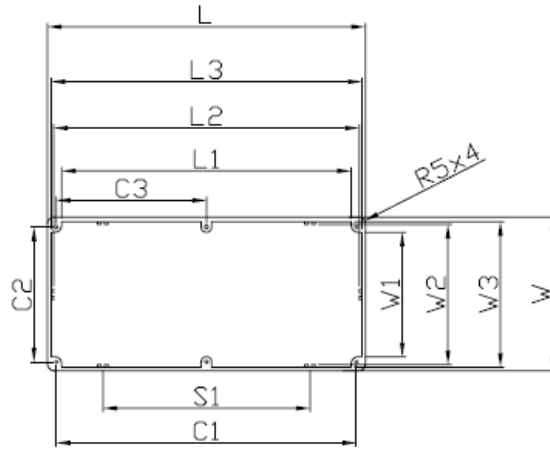
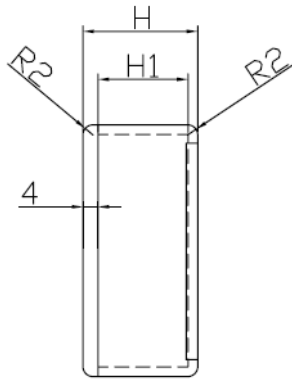
Description:

IP65 Powder Coated

- Diecast aluminium alloy (LM2, BS1490)
- Provided with a neoprene self-adhesive seal which gives protection to IP65 when fitted
- Stainless steel M3.5 fixing screws
- Minimum wall thickness 1.6 mm

Specifications:

Colour:	Black
Body Material:	Die Cast Aluminium
External Dimensions:	165.8 (length) x 127.3 (width) x 76.3 (height)mm
IP Rating:	IP66
Lid Colour:	Black



L	V	H	C1	C2	S1	L1	L2	L3	W1	W2	W3	C3	H1
165.8	127.3	76.3	154.0	116.1	77.1	147.6	157.9	162.2	109.4	119.4	123.8	77.1	70.1