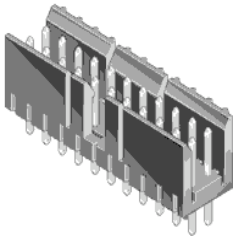



**69168-108HLF -
DUBOX™, Basics+ : 2 Wall
Shrouded Header - Through
Hole - Double row - 8 Positions
2.54 mm - Vertical**



www.fci.com

Mating Half

 65846-016LF

Specifications

General

| | |
|----------------------------|-----------------------------------------|
| Number of contacts | 8 |
| Number of rows | 2 |
| Orientation | Vertical |
| Product Type | Shrouded Header |
| Housing Style (Double row) | 65846 65043 |
| Housing Style (Single row) | 78211 65039 |
| Polarization (Key) | Yes |
| Mating half | Mates with PV CTW Housings and Contacts |
| Series Number | 69168 |

Dimensional

| | |
|---------------------|--------------------|
| Length (Mating pin) | 5.84 mm (0.23 in.) |
| Length (Tail) | 3.5 mm (0.12 in.) |

Electrical

| | |
|-------------------------|---------------|
| Current rating | 3A Continuous |
| Resistance (Insulation) | 100000 M-ohms |
| Voltage rating | 1000V rms |

Mounting

| | |
|----------------|----------------|
| Mounting style | Through Mount |
| Solder process | Wave Soldering |

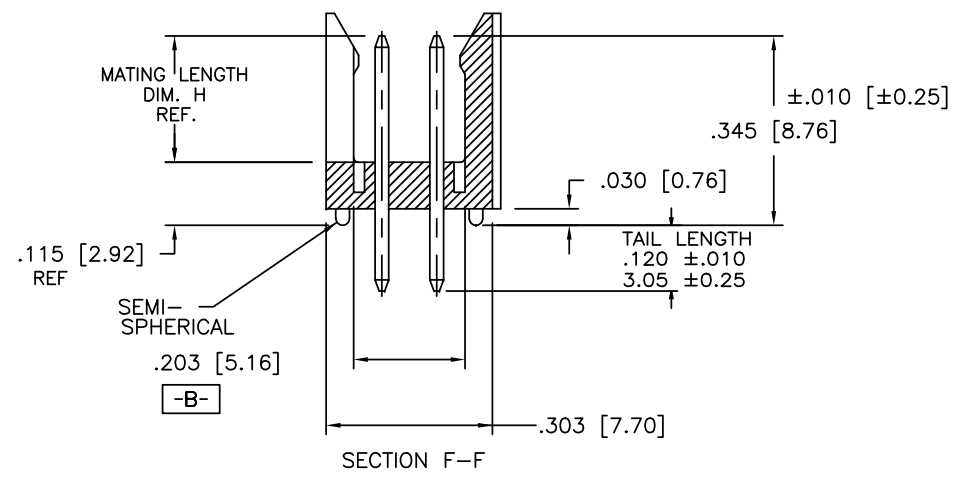
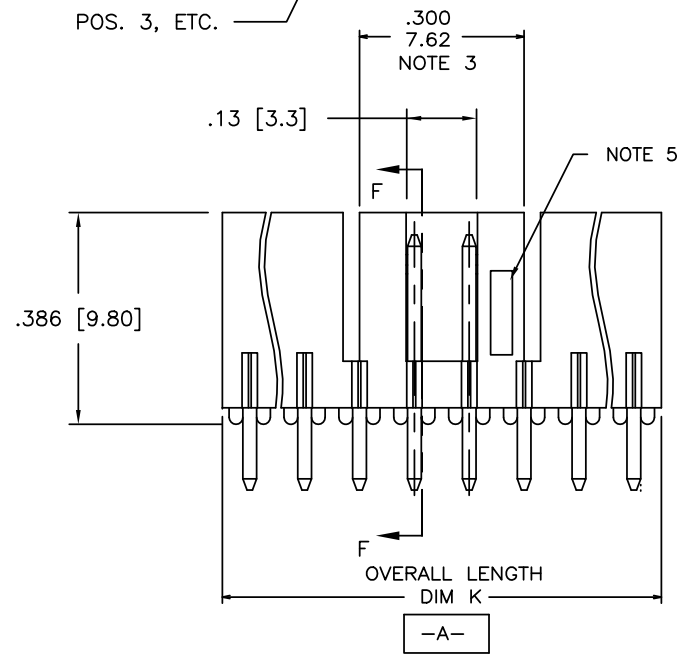
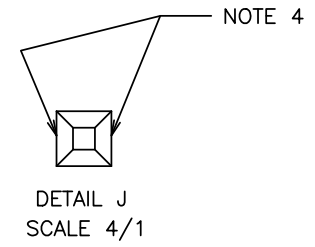
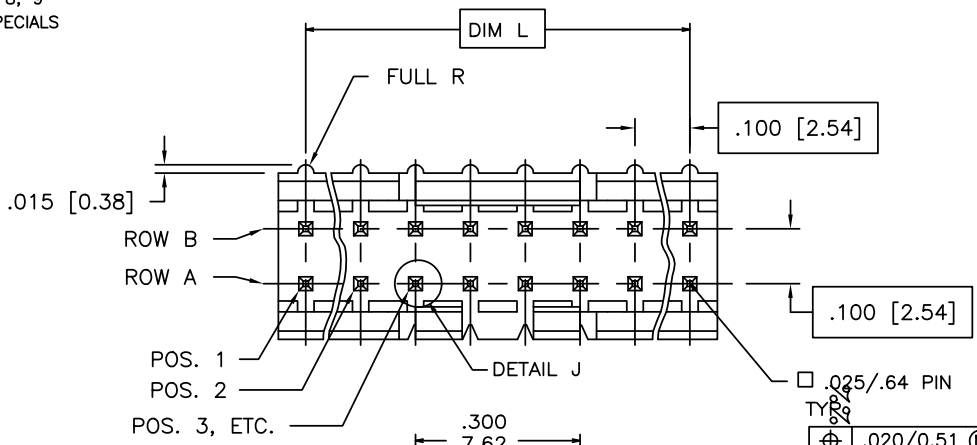
Physical

| | |
|------------------------|------------------------|
| Color (Housing) | Black |
| Material (Contact) | Phosphor Bronze |
| Material (Housing) | Thermoplastic |
| Plating (Contact area) | 0.76 µm (30 µin.) Gold |

| | |
|----------------------------------------|--------------------------|
| Plating (Tail) | 0.76 µm (30 µin.) Gold |
| Underplating | 1.27 µm (50 µin.) Nickel |
| Temperature (Operating - range) | -40°C to +95°C |
| Approvals / Certifications | |
| UL File Number | E66906 |
| CSA File Number | LR46923 |
| Approvals / Certifications | UL and CSA Approved |
| Other Features | |
| Packaging (Type) | Bulk |

PRODUCT NUMBER
 69168-XYZHLF

- LEAD FREE OPTION
SEE NOTE 7, 8, 9
- CUSTOMER SPECIALS
SEE NOTE 6
- NO. OF POS.
SEE TABLE
- PIN PLATING
- BASE P/N



| | | | | |
|-------------------------------|---------------------------------------|----------------------------------|-----------------|-------------------------------------------------------|
| mat'l. code | surface ISO 1302 ✓ | tolerance ISO 406 ISO 1101 | projection ⊕ | product family HEADER |
| ltr ecn nldr date | tolerances unless otherwise specified | | INCH/MM | title FRICTION LATCH HEADER DOUBLE ROW VERTICAL |
| M 01-N-011899 JZ 2012-05-31 | angles | linear | scale 3:1 | dwg no 69168 sheet of 2 size A3 |
| G V03-0352 GJP 03/25/03 0°±2' | | | | type Product Customer Drawing |
| H M05-0134 ERE 06/15/05 dr | L.SADERS | 5/3/95 | | |
| J M06-0256 MHT 9/07/06 engr | L.FYE | 5/3/95 | | |
| K M08-0023 MHT 1/28/08 chr | T.BREWBAKER | 5/3/95 | | |
| L M08-0291 MHT 10/06/08 appd | L.FYE | 5/3/95 | | |
| sheet revision M M | | | | |
| index sheet 1 2 | | | | |



Copyright FCI

| PRODUCT NUMBER | NO.OF POS. | MATING LENGTH DIM H | OVERALL LENGTH DIM K | DIM L | NOTES |
|----------------|------------|---------------------|----------------------|-------------|--------|
| 69168-X06 | 2 X 3 | 0.230/5.84 | 0.300/7.62 | 0.200/5.08 | |
| -X08 | 2 X 4 | 0.230/5.84 | 0.400/10.16 | 0.300/7.62 | |
| -X08A | 2 X 4 | 0.210/5.33 | 0.400/10.16 | 0.300/7.62 | NOTE 6 |
| -X10 | 2 X 5 | 0.230/5.84 | 0.500/12.70 | 0.400/10.16 | |
| -X10A | 2 X 5 | 0.210/5.33 | 0.500/12.70 | 0.400/10.16 | NOTE 6 |
| -X12 | 2 X 6 | 0.230/5.84 | 0.600/15.24 | 0.500/12.70 | |
| -X14 | 2 X 7 | 0.230/5.84 | 0.700/17.78 | 0.600/15.24 | |
| -X16 | 2 X 8 | 0.230/5.84 | 0.800/20.32 | 0.700/17.78 | |
| -X16A | 2 X 8 | 0.210/5.33 | 0.800/20.32 | 0.700/17.78 | NOTE 6 |
| -X18 | 2 X 9 | 0.230/5.84 | 0.900/22.86 | 0.800/20.32 | |
| -X18A | 2 X 9 | 0.210/5.33 | 0.900/22.86 | 0.800/20.32 | NOTE 6 |
| -X20 | 2 X 10 | 0.230/5.84 | 1.000/25.40 | 0.900/22.86 | |
| -X22 | 2 X 11 | 0.230/5.84 | 1.100/27.94 | 1.000/25.40 | |
| -X24 | 2 X 12 | 0.230/5.84 | 1.200/30.48 | 1.100/27.94 | |
| -X26 | 2 X 13 | 0.230/5.84 | 1.300/33.02 | 1.200/30.48 | |
| -X28 | 2 X 14 | 0.230/5.84 | 1.400/35.56 | 1.300/33.02 | |
| 69168-X30 | 2 X 15 | 0.230/5.84 | 1.500/38.10 | 1.400/35.56 | |

NOTES:

- MOLDING MAT'L: GLASS REINFORCED PCT, COLOR: BLACK FLAME RETARDANT PER UL 94 V-0
MAXIMUM OPERATING TEMPERATURE: 130° C
OR
MINERAL FILLED LCP, COLOR BLACK FLAME RETARDANT PER UL 94 V-0
- PIN MATERIAL: 3/4 HD PHOS. BRZ.
- NO SLOTS ON 2 X 5 POSITION OR SMALLER PRODUCT. THE CENTER KEY SLOT WILL BE ON ALL HEADERS REGARDLESS OF SIZE.
- TWO NON-CRITICAL SIDES OF PIN TIP NOT PLATED, BOTH ENDS.
- COMPANY LOGO MAY APPEAR IN THIS AREA.
- CUSTOMER SPECIAL -- "A" SUFFIX INDICATES 0.210/5.33 MATING LENGTH.
- ADD "HLF" SUFFIX AT THE END OF PART NUMBER FOR LEAD FREE OPTION, NOT AVAILABLE FOR -5YY, -5YYH, -6YY & -6YYH.
- PART NUMBERS WITH "H" SUFFIX WILL WITHSTAND EXPOSURE TO 260°C PEAK TEMPERATURE FOR 20 SECONDS IN WAVE SOLDER, INFRA-RED OR VAPOR PHASE SOLDER PROCESS.

PART NUMBERS WITHOUT "H" SUFFIX WILL WITHSTAND EXPOSURE TO 260°C PEAK TEMPERATURE FOR WAVE SOLDER PROCESS.
- THIS PRODUCT MEETS EUROPEAN UNION DIRECTIVES AND OTHER COUNTRY REGULATION AS DESCRIBED IN GS-22-008.
- PLATING OPTIONS:
PERFORMANCE PLATING WILL BE EITHER GOLD OR GXT ON CONTACT OR TAIL, OPTIONALLY (78~295u"/2~7.5u) TIN ON TAIL.
- "THIS PRODUCT HAS 100% TIN PLATING IN THE INTERFACE AND HAS NOT BEEN TESTED FOR WHISKER GROWTH IN ALL INTERCONNECT ENVIRONMENTS."

PIN PLATING CODES

| | |
|---------|------------------------------------------------|
| -1YY | 30u"/.76u (SEE NOTE 10) 50u"/1.27u Ni |
| -2YY | 15u/.38u (SEE NOTE 10) 50u"/1.27u Ni |
| -3YY | 50u"/1.27u (SEE NOTE 10) 50u"/1.27u Ni |
| -4YY | 100u"/2.54u MIN Sn 50u"/1.27u Ni (SEE NOTE 11) |
| -4YYHLF | |
| -5YY | 15u"/.38u (SEE NOTE 10) 50u"/1.27u Ni |
| -6YY | 30u"/.76u (SEE NOTE 10) 50u"/1.27u Ni |
| -7YY | 30u"/.76u (SEE NOTE 10) OVER 50u"/1.27u Ni |
| -8YY | 15u"/.38u (SEE NOTE 10) OVER 50u"/1.27u Ni |

| | | | | |
|-------------------|---------------------------------------|----------------------------------|----------------|--------------------------------------------------------|
| mat'l. code | surface ISO 1302 ✓ | tolerance ISO 406 ISO 1101 | projection | product family HEADER |
| ltr ecn nldr date | tolerances unless otherwise specified | | | title FRICITION LATCH HEADER DOUBLE ROW VERTICAL |
| M | angles | linea | INCH/MM | scale 3:1 |
| | 0±2' | | | |
| dr | L.SADERS | 5/3/95 | | dwg no 69168 |
| engr | L.FYE | 5/3/95 | | sheet 2 of 2 size A3 |
| chr | T.BREWBAKER | 5/3/95 | | |
| appd | L.FYE | 5/3/95 | | type Product Customer Drawing |
| sheet index | revision sheet | | | |